



MLS 7099035 Land

\$269,900

6.55 Acres
Raw Land

TBD Mitchell Road
Nisswa MN 56468

Status: Coming Soon

Description:

Discover 6.55 spectacular acres along the scenic waters of Stony Brook, a renowned trout stream offering the perfect blend of privacy, recreation, and natural beauty. Boasting over 290 feet of pristine stream frontage, this exceptional property is a rare opportunity to own a peaceful slice of the Brainerd Lakes Area.

Towering pines, abundant wildlife, and a picturesque landscape create an incredible setting for your dream home, weekend retreat, or future investment. An established driveway easement provides convenient access while maintaining the property's secluded charm.

Step outside and embrace the Northwoods lifestyle. Cast a line into the trout stream, explore nearby ATV and horseback trails, enjoy exceptional hunting, or simply relax and take in the sights and sounds of nature from your own backyard. Located close to downtown Nisswa, you'll enjoy easy access to charming boutiques, locally loved restaurants, coffee shops, golf courses, parks, and year round community events. Perfectly positioned between the Whitefish Chain and Gull Lake Chain, endless opportunities for boating, fishing, swimming, and lakeside adventures are always within reach. Properties that offer acreage, water frontage, privacy, and a premier location are becoming increasingly hard to find. Whether you're dreaming of building a custom home, creating a private family retreat, or securing an investment for the future, this remarkable 6.55-acre parcel delivers the space, setting, and lifestyle you've been searching for. Build where every season feels like an escape, and let Stony Brook become the backdrop to your next chapter.

Additional Details:

Lot Acres	6.55
Lot Dimensions	300 x 930 x 300 x 930
School District	186
Taxes	\$436
Taxes with Assessments	\$436
Tax Year	2026

Additional Features:

Driving Directions:

West on CR 29 4 miles from Hwy 37 i north of Nisswa



Listed By:
Northland Sotheby's International Realty

Affinity Real Estate Inc. participates in the Regional Multiple Listing Service of Minnesota, Inc Broker Reciprocity (sm) program, allowing us to display other broker's listings on our website. All properties are subject to prior sale, change or withdrawal.



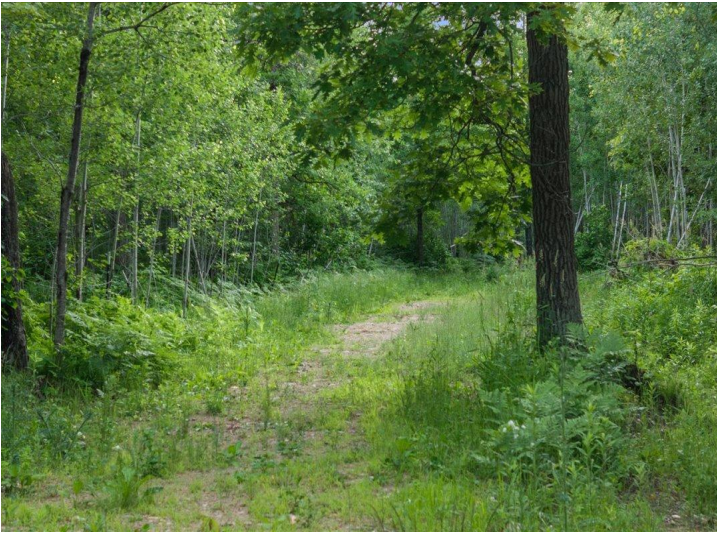
Call Affinity Real Estate

218-237-3333

info@affinityrealestate.com



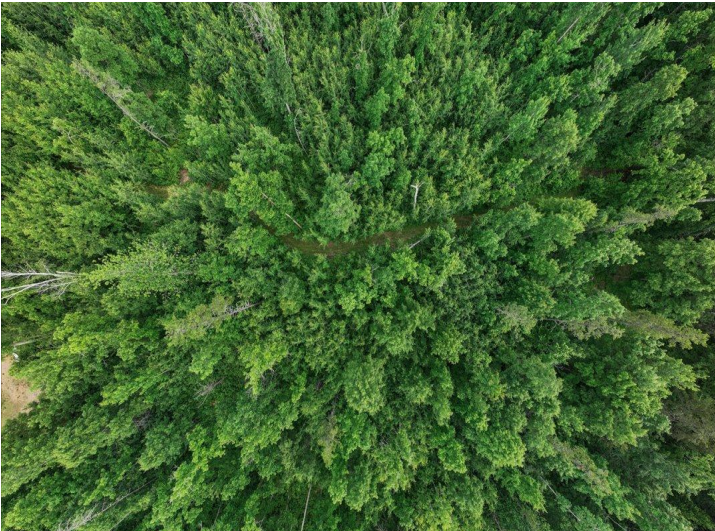
Affinity Real Estate - 600 Park Avenue South - Park Rapids MN 56470



website: www.AffinityRealEstate.com | email: info@affinityrealestate.com | office: 218-237-3333 | fax:218-237-3377



\$269,900
MLS 7099035 Land
TBD Mitchell Road
Nisswa MN 56468



website: www.AffinityRealEstate.com | email: info@affinityrealestate.com | office: 218-237-3333 | fax:218-237-3377



\$269,900
MLS 7099035 Land
TBD Mitchell Road
Nisswa MN 56468



website: www.AffinityRealEstate.com | email: info@affinityrealestate.com | office: 218-237-3333 | fax:218-237-3377



\$269,900
MLS 7099035 Land
TBD Mitchell Road
Nisswa MN 56468



website: www.AffinityRealEstate.com | email: info@affinityrealestate.com | office: 218-237-3333 | fax:218-237-3377



\$269,900
MLS 7099035 Land
TBD Mitchell Road
Nisswa MN 56468