



MLS 7099258 Residential

\$389,900

2,868 sq ft
4 bedrooms
4 baths

5786 Midvalley Lane
Bemidji MN 56601

Status: Coming Soon

Description:

This spacious 2007 rambler delivers exceptional value with an impressive amount of finished square footage and the rare convenience of true one-level living if desired. Fresh interior paint throughout gives the home a bright, move-in-ready feel from the moment you step inside.

The main floor features vaulted ceilings and an open-concept layout that creates a warm, airy atmosphere. The large kitchen is a standout, offering a beautiful quartz countertop, breakfast bar, abundant chestnut-finished oak cabinetry, and generous storage that makes cooking effortless. A kitchen window over the sink brings in natural light and frames views of the backyard. The primary bedroom with a full bathroom is located on the main level, along with an additional bedroom and the main-level laundry room, making everyday living simple and accessible.

The finished basement expands your living space dramatically, featuring high ceilings, custom built-in bookshelves, two additional bedrooms, and a full bathroom—perfect for guests, extended family, or flexible use.

Major updates add peace of mind, including all-new 2025 Andersen windows and a 2024 metal roof. The exterior is finished with low-maintenance vinyl siding, ensuring easy upkeep year-round.


Outdoor living is exceptional here. The home sits on a huge fenced-in backyard with beautiful, established trees that offer shade, privacy, and a serene natural backdrop. Enjoy the welcoming front porch or step out the sliding glass doors to a relaxing back deck, ideal for morning coffee or evening gatherings.

Attached two car garage that has an entrance close to the kitchen.

With its generous layout, modern updates, fresh finishes, and the ability to live entirely on one level, this rambler offers comfort, convenience, and outstanding value. Finally, this home is just a 10 minute drive to Bemidji! Available July 11 for showings.

Additional Details:

Year Built	2007
Lot Acres	1.04
Lot Dimensions	150x300
Garage Stalls	2
School District	31
Taxes	\$3,282
Taxes with Assessments	\$3,282

1  Listed By: 2026
Headwaters Realty Services LLC

Additional Features:
Affinity Real Estate Inc. participates in the Regional Multiple Listing Service of Minnesota, Inc Broker Reciprocity (RMR) program, allowing us to display other broker's listings on our website! All properties are subject to prior sale, change or withdrawal.

Driving Directions:



Call Affinity Real Estate

218-237-3333

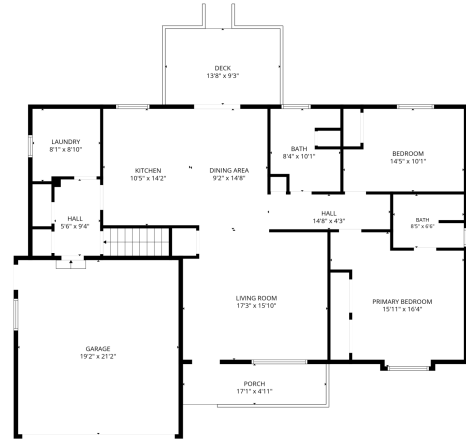
info@affinityrealestate.com

Heat: Forced Air Heat Pump Sewer: Private

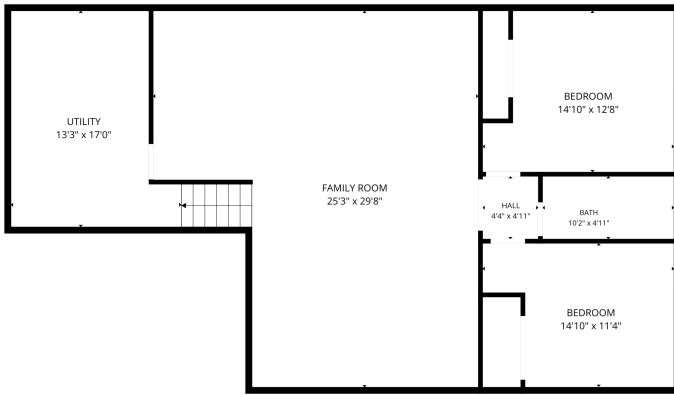


Affinity Real Estate - 600 Park Avenue South - Park Rapids MN 56470

West on 5th Street to Archery Ln, Right to Mid Valley Ln, Right to home



FLOOR PLAN CREATED BY EUBICASA APP. MEASUREMENTS DEEMED HIGHLY RELIABLE BUT NOT GUARANTEED.



FLOOR PLAN CREATED BY EUBICASA APP. MEASUREMENTS DEEMED HIGHLY RELIABLE BUT NOT GUARANTEED.

website: www.AffinityRealEstate.com | email: info@affinityrealestate.com | office: 218-237-3333 | fax: 218-237-3377



\$389,900
 MLS 7099258 Residential
 5786 Midvalley Lane
 Bemidji MN 56601