



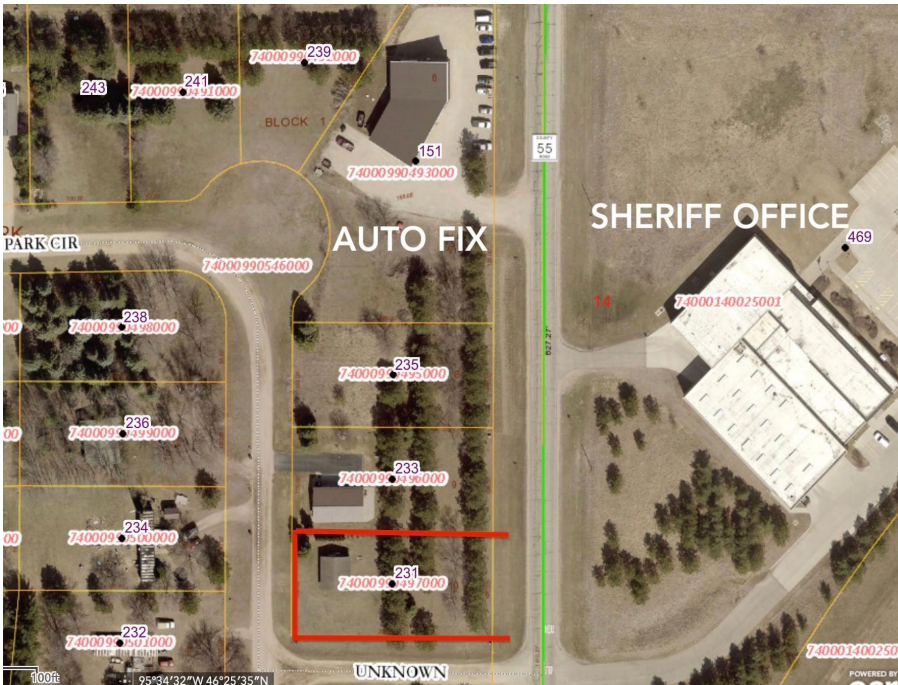
MLS 7099365 Land

\$60,000

0.459 Acres
Other

231 Park Circle
Ottertail MN 56571

Status: Active



Description:

.46 Acre Corner Lot in Ottertail with Garage.

Beautiful and level .46-acre corner lot in the City of Ottertail. Prime building site features mature trees and includes a 26' x 30' Garage with double doors—ready for storage or future use. Conveniently located within walking distance to Thumper Pond Golf Course, Otter Tail Lake, and several local restaurants.

Additional Details:

Lot Acres	0.459
Lot Dimensions	100 x 210
School District	549
Taxes	\$364
Taxes with Assessments	\$364
Tax Year	2024

Additional Features:

Driving Directions:

Corner of State Hwy 108 & :Hwy 78



Listed By:
Boll Realty

Affinity Real Estate Inc. participates in the Regional Multiple Listing Service of Minnesota, Inc Broker Reciprocity (sm) program, allowing us to display other broker's listings on our website. All properties are subject to prior sale, change or withdrawal.



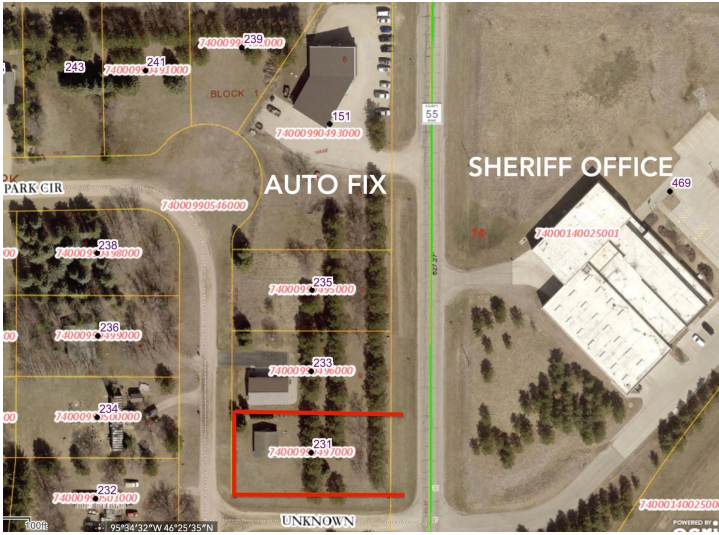
Call Affinity Real Estate

218-237-3333

info@affinityrealestate.com



Affinity Real Estate - 600 Park Avenue South - Park Rapids MN 56470



website: www.AffinityRealEstate.com | email: info@affinityrealestate.com | office: 218-237-3333 | fax:218-237-3377



\$60,000
MLS 7099365 Land
231 Park Circle
Ottertail MN 56571



website: www.AffinityRealEstate.com | email: info@affinityrealestate.com | office: 218-237-3333 | fax:218-237-3377



\$60,000
MLS 7099365 Land
231 Park Circle
Ottertail MN 56571



website: www.AffinityRealEstate.com | email: info@affinityrealestate.com | office: 218-237-3333 | fax:218-237-3377



\$60,000
MLS 7099365 Land
231 Park Circle
Ottertail MN 56571



website: www.AffinityRealEstate.com | email: info@affinityrealestate.com | office: 218-237-3333 | fax:218-237-3377



\$60,000
MLS 7099365 Land
231 Park Circle
Ottertail MN 56571