



MLS 7099386 Residential

\$400,000

2,380 sq ft
3 bedrooms
3 baths

16820 County 81
Park Rapids MN 56470

Status: Active

Description:

Welcome to your own private slice of northern Minnesota! Nestled on over 6 beautiful acres just minutes from Park Rapids, this exceptional 3-bedroom, 3-bath home offers the perfect blend of peaceful country living and everyday convenience. From the moment you step inside, you'll appreciate the quality craftsmanship and stunning custom woodwork that gives this home its warm, inviting character. Spacious living areas provide plenty of room for family and entertaining. Outside, the beautifully landscaped yard creates a picturesque setting with mature trees, lush green space, and room to relax, garden, or simply enjoy nature. If you've been searching for a home that combines timeless craftsmanship, acreage, and a convenient location just outside of Park Rapids, this is one you won't want to miss!

Additional Details:

Year Built	1972
Lot Acres	6.24
Lot Dimensions	TBD
Garage Stalls	2
School District	309
Taxes	\$3,416
Taxes with Assessments	\$3,416
Tax Year	2026

Additional Features:

Basement: Block, Partial, Walkout **Fuel:** Electric, Propane **Garage:** 2 **Heat:** Baseboard, Forced Air, Fireplace(s) **Sewer:** Private Sewer
Water: Drilled, Well **Air Conditioning:** Central Air

Driving Directions:

From PR, head East on Hwy 34. Turn left onto Co Hwy 4 and continue 1.5 mi to home on left (16820).



Listed By:
Keller Williams Realty Professionals

Affinity Real Estate Inc. participates in the Regional Multiple Listing Service of Minnesota, Inc Broker Reciprocity (sm) program, allowing us to display other broker's listings on our website. All properties are subject to prior sale, change or withdrawal.



Call Affinity Real Estate

218-237-3333

info@affinityrealestate.com



Affinity Real Estate - 600 Park Avenue South - Park Rapids MN 56470



website: www.AffinityRealEstate.com | email: info@affinityrealestate.com | office: 218-237-3333 | fax:218-237-3377



\$400,000
MLS 7099386 Residential
16820 County 81
Park Rapids MN 56470



website: www.AffinityRealEstate.com | email: info@affinityrealestate.com | office: 218-237-3333 | fax: 218-237-3377

Affinity
REAL ESTATE INC

\$400,000
MLS 7099386 Residential
16820 County 81
Park Rapids MN 56470



website: www.AffinityRealEstate.com | email: info@affinityrealestate.com | office: 218-237-3333 | fax:218-237-3377



\$400,000
MLS 7099386 Residential
16820 County 81
Park Rapids MN 56470



website: www.AffinityRealEstate.com | email: info@affinityrealestate.com | office: 218-237-3333 | fax: 218-237-3377

Affinity
REAL ESTATE INC

\$400,000
MLS 7099386 Residential
16820 County 81
Park Rapids MN 56470



website: www.AffinityRealEstate.com | email: info@affinityrealestate.com | office: 218-237-3333 | fax:218-237-3377

Affinity
REAL ESTATE INC

\$400,000
MLS 7099386 Residential
16820 County 81
Park Rapids MN 56470



website: www.AffinityRealEstate.com | email: info@affinityrealestate.com | office: 218-237-3333 | fax:218-237-3377

Affinity
REAL ESTATE INC

\$400,000
MLS 7099386 Residential
16820 County 81
Park Rapids MN 56470



website: www.AffinityRealEstate.com | email: info@affinityrealestate.com | office: 218-237-3333 | fax:218-237-3377

Affinity
REAL ESTATE INC

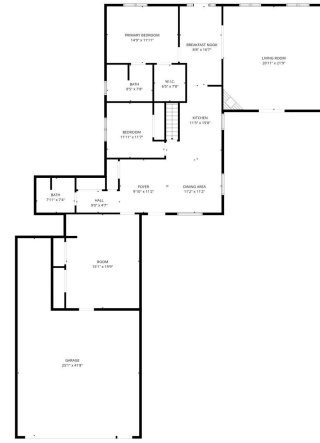
\$400,000
MLS 7099386 Residential
16820 County 81
Park Rapids MN 56470



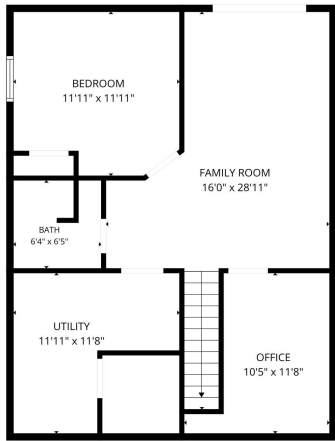
website: www.AffinityRealEstate.com | email: info@affinityrealestate.com | office: 218-237-3333 | fax:218-237-3377

Affinity
REAL ESTATE INC

\$400,000
MLS 7099386 Residential
16820 County 81
Park Rapids MN 56470



FLOOR PLAN CREATED BY EUBICASA APP. MEASUREMENTS DEEMED HIGHLY RELIABLE BUT NOT GUARANTEED.



FLOOR PLAN CREATED BY EUBICASA APP. MEASUREMENTS DEEMED HIGHLY RELIABLE BUT NOT GUARANTEED.

website: www.AffinityRealEstate.com | email: info@affinityrealestate.com | office: 218-237-3333 | fax:218-237-3377



\$400,000
 MLS 7099386 Residential
 16820 County 81
 Park Rapids MN 56470