



MLS 7099464 Residential

\$249,900

1,308 sq ft
3 bedrooms
2 baths

23386 Sleepy Hollow Court
Sebeka MN 56477

Status: Active

Description:

Welcome to 'Sleepy Hollow'. This is a new and beautiful development exclusive to Nimrod, MN. Tucked away in the pines is this brand new construction with 3 bedrooms, 2 baths and over 1,300 square feet of finished living space. Features an attractive cedar/stone exterior, covered front porch, zero-entry floor plan (no steps in or out), spray foamed walls, custom hickory cabinetry with soft close doors (by SWI), stainless appliances, in-floor heat, mini-split (heat pump), fiber optic internet and so much more! This is a perfect property for your homestead or recreational headquarters and there are no restrictive covenants. Nimrod is a fun little town home to the famous Bull Bash, Jubilee Days and the ever popular Nimrod Bar and Grill.

Additional Details:

Year Built	2025
Lot Acres	2.22
Lot Dimensions	346 x 278 x 348 x 277
School District	820
Taxes	\$36
Taxes with Assessments	\$106
Tax Year	2026

Additional Features:

Fuel: Propane **Heat:** Boiler, Heat Pump, In-Floor Heating

Driving Directions:

As you enter Nimrod from the West take the right just before the Nimrod Lutheran Church. This is a short stretch that turns into Sleepy Hollow Ct. Proceed to property on left.



Listed By:
Affinity Real Estate Inc.

Affinity Real Estate Inc. participates in the Regional Multiple Listing Service of Minnesota, Inc Broker Reciprocity (sm) program, allowing us to display other broker's listings on our website. All properties are subject to prior sale, change or withdrawal.



Call Affinity Real Estate

218-237-3333

info@affinityrealestate.com



Affinity Real Estate - 600 Park Avenue South - Park Rapids MN 56470



website: www.AffinityRealEstate.com | email: info@affinityrealestate.com | office: 218-237-3333 | fax:218-237-3377

Affinity
REAL ESTATE INC

\$249,900
MLS 7099464 Residential
23386 Sleepy Hollow Court
Sebeka MN 56477



website: www.AffinityRealEstate.com | email: info@affinityrealestate.com | office: 218-237-3333 | fax: 218-237-3377



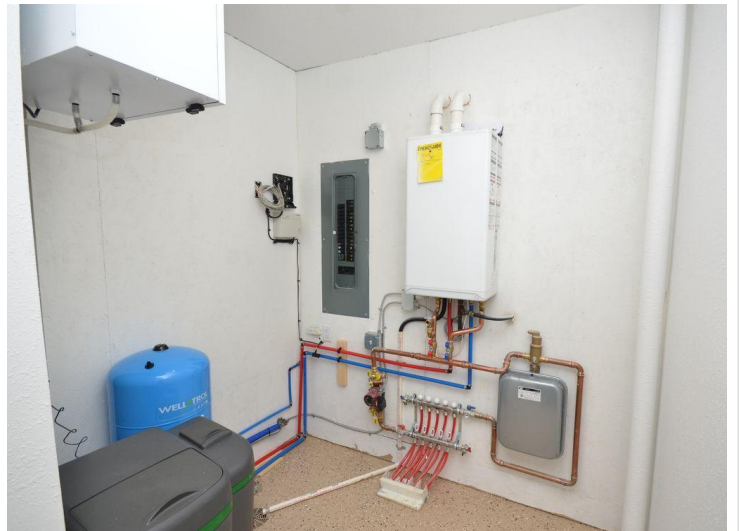
\$249,900
MLS 7099464 Residential
23386 Sleepy Hollow Court
Sebeka MN 56477



website: www.AffinityRealEstate.com | email: info@affinityrealestate.com | office: 218-237-3333 | fax: 218-237-3377

Affinity
REAL ESTATE INC

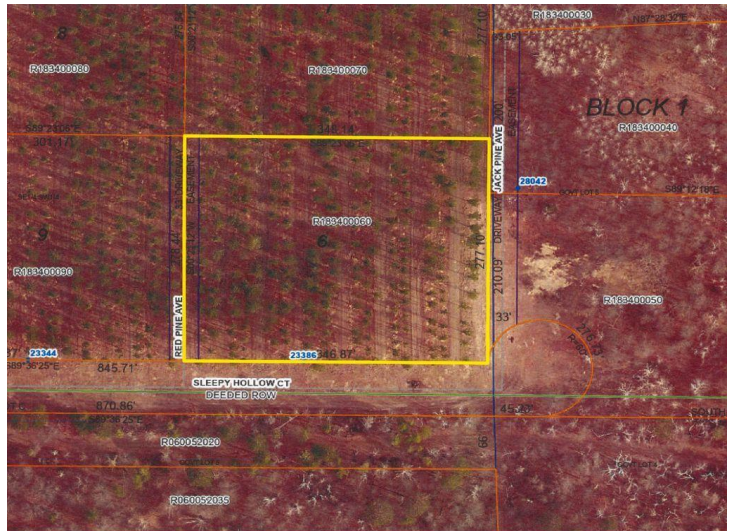
\$249,900
MLS 7099464 Residential
23386 Sleepy Hollow Court
Sebeka MN 56477



website: www.AffinityRealEstate.com | email: info@affinityrealestate.com | office: 218-237-3333 | fax: 218-237-3377



\$249,900
MLS 7099464 Residential
23386 Sleepy Hollow Court
Sebeka MN 56477



website: www.AffinityRealEstate.com | email: info@affinityrealestate.com | office: 218-237-3333 | fax:218-237-3377



\$249,900
 MLS 7099464 Residential
 23386 Sleepy Hollow Court
 Sebeka MN 56477