



MLS 7099752 Residential

\$190,000

912 sq ft
3 bedrooms
1 baths

1265 230th Street
Mahnomen MN 56557

Status: Active

Description:

Country living on nearly 10 acres just minutes from Mahnomen! Located less than a mile from town with only one mile of gravel, this charming 3-bedroom, 1-bath home offers the perfect blend of rural privacy and convenience. The main floor features the primary bedroom, laundry with added floating shelving, updated kitchen flooring, tile countertops, added pantry shelving and recessed lighting, and an inviting dining area that flows into a cozy living room accented by a tongue-and-groove feature wall. Upstairs, the loft offers updated laminate flooring, two additional bedrooms, and added storage. Recent improvements include a newer block foundation, new well pressure tank (2026), 85-gallon Marathon water heater, water softener, water filtration system, fresh paint, and updated flooring. The additional 4.32-acre tillable parcel, currently used for organic farming, makes this nearly 10-acre property ideal for hobby farming, horses, gardening, or simply enjoying country living with room to grow.

Additional Details:

| | |
|------------------------|-----------|
| Year Built | 1928 |
| Lot Acres | 10 |
| Lot Dimensions | Irregular |
| Garage Stalls | 2 |
| School District | 432 |
| Taxes | \$726 |
| Taxes with Assessments | \$848 |
| Tax Year | 2026 |

Additional Features:

Fuel: Electric, Propane **Heat:** Baseboard, Forced Air

Driving Directions:

Hwy 59 to E Jefferson Ave; head West to S Main St; take S Main St to W Madison Ave; head South on N Fifth St; turn Right onto 230th St and follow East for .9 miles. *Tar will turn to gravel and subject property will be first on the left.



Listed By:
REALTY XPERTS

Affinity Real Estate Inc. participates in the Regional Multiple Listing Service of Minnesota, Inc Broker Reciprocity (sm) program, allowing us to display other broker's listings on our website. All properties are subject to prior sale, change or withdrawal.



Call Affinity Real Estate

218-237-3333

info@affinityrealestate.com



Affinity Real Estate - 600 Park Avenue South - Park Rapids MN 56470



website: www.AffinityRealEstate.com | email: info@affinityrealestate.com | office: 218-237-3333 | fax:218-237-3377



\$190,000
MLS 7099752 Residential
1265 230th Street
Mahnomen MN 56557



website: www.AffinityRealEstate.com | email: info@affinityrealestate.com | office: 218-237-3333 | fax:218-237-3377



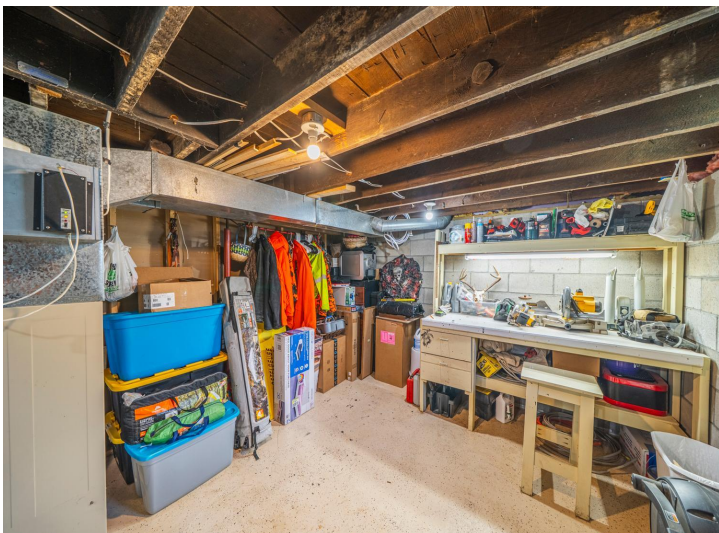
\$190,000
MLS 7099752 Residential
1265 230th Street
Mahnomen MN 56557



website: www.AffinityRealEstate.com | email: info@affinityrealestate.com | office: 218-237-3333 | fax: 218-237-3377

Affinity
REAL ESTATE INC

\$190,000
MLS 7099752 Residential
1265 230th Street
Mahnomon MN 56557



website: www.AffinityRealEstate.com | email: info@affinityrealestate.com | office: 218-237-3333 | fax:218-237-3377



\$190,000
MLS 7099752 Residential
1265 230th Street
Mahnomon MN 56557



website: www.AffinityRealEstate.com | email: info@affinityrealestate.com | office: 218-237-3333 | fax:218-237-3377



\$190,000
MLS 7099752 Residential
1265 230th Street
Mahnomon MN 56557



website: www.AffinityRealEstate.com | email: info@affinityrealestate.com | office: 218-237-3333 | fax:218-237-3377



\$190,000
MLS 7099752 Residential
1265 230th Street
Mahnomn MN 56557



website: www.AffinityRealEstate.com | email: info@affinityrealestate.com | office: 218-237-3333 | fax:218-237-3377



\$190,000
MLS 7099752 Residential
1265 230th Street
Mahnomon MN 56557