



MLS 7099830 Lake Land

**\$50,000**

**Description:**

(description unavailable)

**Additional Details:**

Lot Acres	0.05
Lot Dimensions	34 x 66
School District	22
Taxes	\$194
Taxes with Assessments	\$194
Tax Year	2026

**Additional Features:**

**Driving Directions:**

From Hwy 59 Go West on Cty Rd 20 to County Rd 31 South, just past the Pelican Lake East Boat access. Storage shed pads are on the east side.



Listed By:  
Counselor Realty Detroit Lakes

Affinity Real Estate Inc. participates in the Regional Multiple Listing Service of Minnesota, Inc Broker Reciprocity (sm) program, allowing us to display other broker's listings on our website. All properties are subject to prior sale, change or withdrawal.



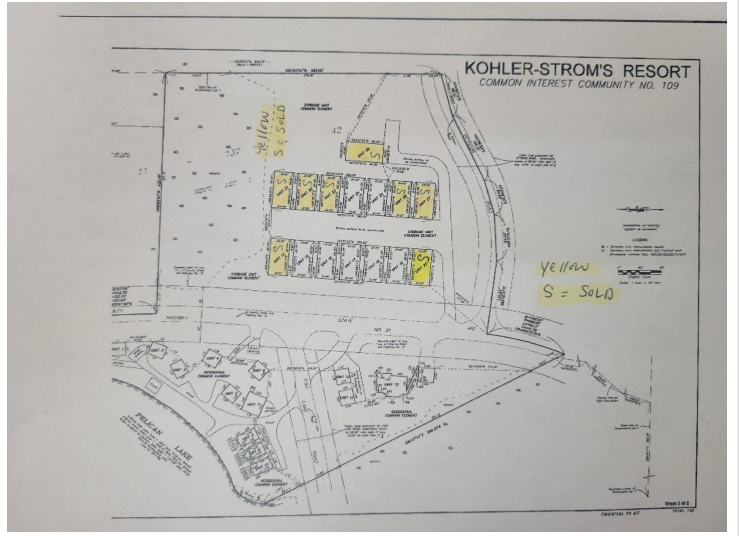
**Call Affinity Real Estate**

**218-237-3333**

**info@affinityrealestate.com**



**Affinity Real Estate - 600 Park Avenue South - Park Rapids MN 56470**



website: [www.AffinityRealEstate.com](http://www.AffinityRealEstate.com) | email: [info@affinityrealestate.com](mailto:info@affinityrealestate.com) | office: 218-237-3333 | fax: 218-237-3377



**\$50,000**  
MLS 7099830 Lake Land  
51021 #15 Fish Lake Rd  
Detroit Lakes MN 56501