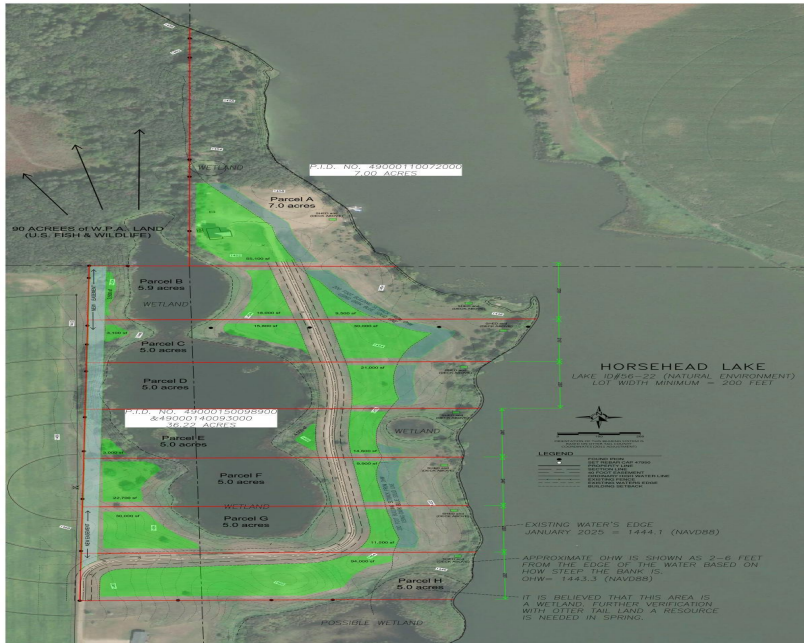




MLS 7100008 Lake Land

\$189,900



**Description:**

A. Rare Opportunity to own a 7 Acre Very Unique Private Lake Lot... Property is located at the dead end of a road so you have privacy to enjoy the woods and the lake. with over 1000 Ft of Shoreline & adjacent to 90 Acres of a Public Hunters Paradise.. This is a must see lot to look at before you buy.

Spend a day along the Beautiful Trail thru the woods along the Lake. Includes a Picnic area with Boat Access.

It has a home that was burned and is not salvageable. However, the slab may be usable for building, You can check with your own contractors. Dimensions are 32x56 and 24x28 for the Concrete Slab. Seller has estimates for costs to tear down & rebuild.it has a sandpoint well & 2250 gallon Holding Tank.

Birdhouses on Horsehead Lake Subdivision has Eight 5+ Acre Lake Lots with No Steps to the 170 Acre lake. Lots starting at \$69,900.

You can build a 260sf x 10ft high Water Accessory Structure 20ft from the lake.

Whether you enjoy the Sunset on the Pond or Sunrise on Horsehead Lake, you will have water to enhance your view. A Hunters Paradise, Take a walk or ride on a trail on the west side of the pond to 170 Acres of US Fish & Wildlife Refuge.

All property owners have an easement to access the WPA Land. This full access makes it convenient to hunt, explore or take in nature.


Short drive to Golf Courses & Local Wineries. Easy access to the many amenities in Alexandria & Parkers Prairie, only a mile away.

. Agent is related to Seller.

**Additional Details:**

Lot Acres	7.26
Lot Dimensions	1x1
School District	547
Taxes	(unreported)
Taxes with Assessments	(unreported)
Tax Year	2025

**Additional Features:**

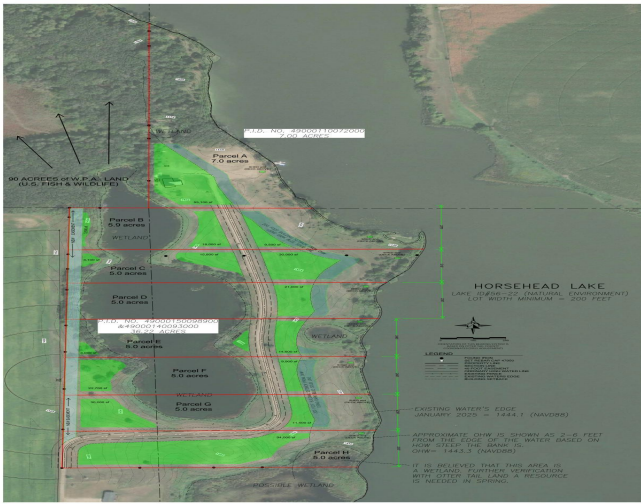
 Listed By:  
Better Homes and Gardens Real Estate

Headquartered in St. Louis, Missouri, Bank Regional Multiple Listing Service (MLS) is a national network of real estate professionals. To view other broker's listings on our website. All properties are subject to prior sale, change or withdrawal.

 Call Affinity Real Estate  
**218-237-3333**  
info@affinityrealestate.com

MLS REALTOR AFFINITY

Affinity Real Estate - 600 Park Avenue South - Park Rapids MN 56470



website: [www.AffinityRealEstate.com](http://www.AffinityRealEstate.com) | email: [info@affinityrealestate.com](mailto:info@affinityrealestate.com) | office: 218-237-3333 | fax: 218-237-3377



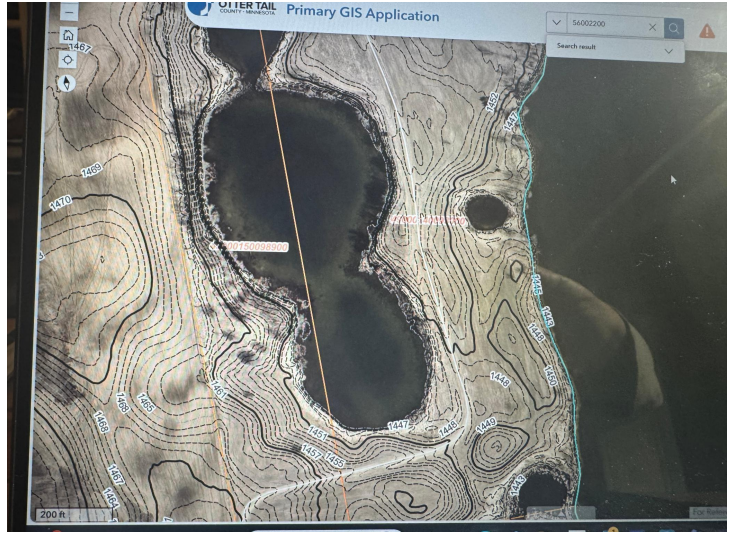
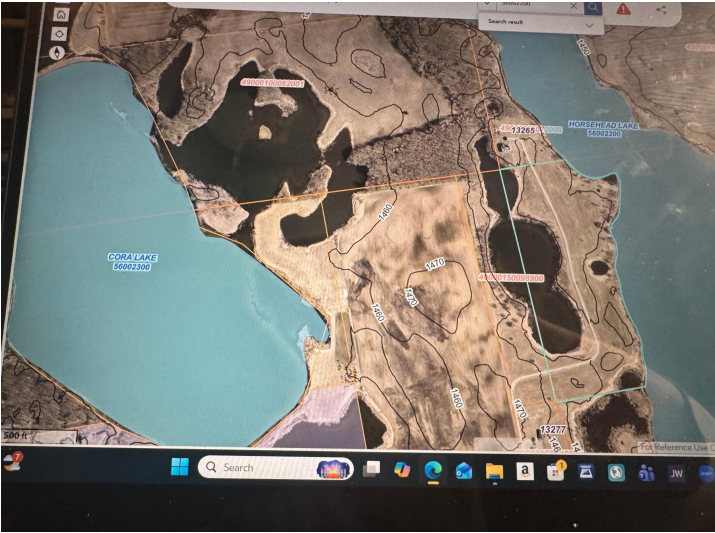
**\$189,900**  
 MLS 7100008 Lake Land  
 13265 County Rd. 42  
 Parkers Prairie MN 56361



website: [www.AffinityRealEstate.com](http://www.AffinityRealEstate.com) | email: [info@affinityrealestate.com](mailto:info@affinityrealestate.com) | office: 218-237-3333 | fax:218-237-3377

**Affinity**  
REAL ESTATE INC

**\$189,900**  
MLS 7100008 Lake Land  
13265 County Rd. 42  
Parkers Prairie MN 56361



website: [www.AffinityRealEstate.com](http://www.AffinityRealEstate.com) | email: [info@affinityrealestate.com](mailto:info@affinityrealestate.com) | office: 218-237-3333 | fax:218-237-3377



**\$189,900**  
MLS 7100008 Lake Land  
13265 County Rd. 42  
Parkers Prairie MN 56361