



MLS 7100024 Land

\$45,000

1.73 Acres
Raw Land

42023 County Highway 14
Perham MN 56573

Status: Active

Description:

1.73 acres of vacant land in a great location! Located on paved County Highway 14 just outside the city limits of Richville, this property offers excellent visibility and easy access while still providing the privacy of a wooded setting. Making this property an ideal location for a business, storage building, camping retreat, or future build.

Additional Details:

Lot Acres	1.73
Lot Dimensions	215'x350'
School District	549
Taxes	\$180
Taxes with Assessments	\$180
Tax Year	2026

Additional Features:

Driving Directions:

Going South on Hwy 78 out of Perham, turn right onto Co Hwy 14, Property will be on the right about 2 miles.



Listed By:
Coldwell Banker Preferred Partners

Affinity Real Estate Inc. participates in the Regional Multiple Listing Service of Minnesota, Inc Broker Reciprocity (sm) program, allowing us to display other broker's listings on our website. All properties are subject to prior sale, change or withdrawal.



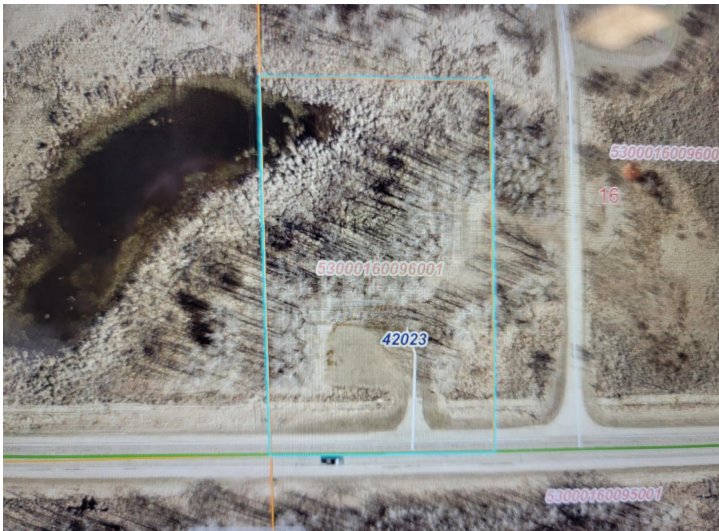
Call Affinity Real Estate

218-237-3333

info@affinityrealestate.com



Affinity Real Estate - 600 Park Avenue South - Park Rapids MN 56470



website: www.AffinityRealEstate.com | email: info@affinityrealestate.com | office: 218-237-3333 | fax:218-237-3377



\$45,000
MLS 7100024 Land
42023 County Highway 14
Perham MN 56573