



MLS 7100065 Residential

\$369,000

2,020 sq ft
3 bedrooms
2 baths

18405 CR-2
Brainerd MN 56401

Status: Active

Description:

Escape to your own private retreat on 15 secluded acres! This beautifully remodeled home blends modern updates with peaceful country living. Thoughtfully renovated from top to bottom, it offers stylish finishes, an inviting open layout, and move-in-ready convenience. Surrounded by mature trees and abundant wildlife, you'll enjoy unmatched privacy while still being within easy reach of nearby amenities. Whether you're looking for a hobby farm, recreational property, or simply a quiet place to call home, this stunning acreage offers endless possibilities. Experience the perfect balance of comfort, nature, and seclusion on this one-of-a-kind property.

Additional Details:

Year Built	1990
Lot Acres	15
Lot Dimensions	1538x431x1538x431
Garage Stalls	2
School District	181
Taxes	\$1,487
Taxes with Assessments	\$1,512
Tax Year	2026

Additional Features:

Basement: Block, Daylight/Lookout Windows, Finished, Full, Walkout **Fuel:** Propane **Garage:** 2 **Heat:** Forced Air **Sewer:** Private Sewer, Septic System Compliant - Yes **Water:** Drilled, Well **Air Conditioning:** Central Air

Driving Directions:

From Brainerd south on CR-25, East on CR-2. House is on south side of CR-2.



Listed By:
LPT Realty, LLC.

Affinity Real Estate Inc. participates in the Regional Multiple Listing Service of Minnesota, Inc Broker Reciprocity (sm) program, allowing us to display other broker's listings on our website. All properties are subject to prior sale, change or withdrawal.



Call Affinity Real Estate

218-237-3333

info@affinityrealestate.com



Affinity Real Estate - 600 Park Avenue South - Park Rapids MN 56470



website: www.AffinityRealEstate.com | email: info@affinityrealestate.com | office: 218-237-3333 | fax:218-237-3377

Affinity
REAL ESTATE INC

\$369,000
MLS 7100065 Residential
18405 CR-2
Brainerd MN 56401



website: www.AffinityRealEstate.com | email: info@affinityrealestate.com | office: 218-237-3333 | fax:218-237-3377



\$369,000
MLS 7100065 Residential
18405 CR-2
Brainerd MN 56401



website: www.AffinityRealEstate.com | email: info@affinityrealestate.com | office: 218-237-3333 | fax:218-237-3377



\$369,000
MLS 7100065 Residential
18405 CR-2
Brainerd MN 56401



website: www.AffinityRealEstate.com | email: info@affinityrealestate.com | office: 218-237-3333 | fax:218-237-3377



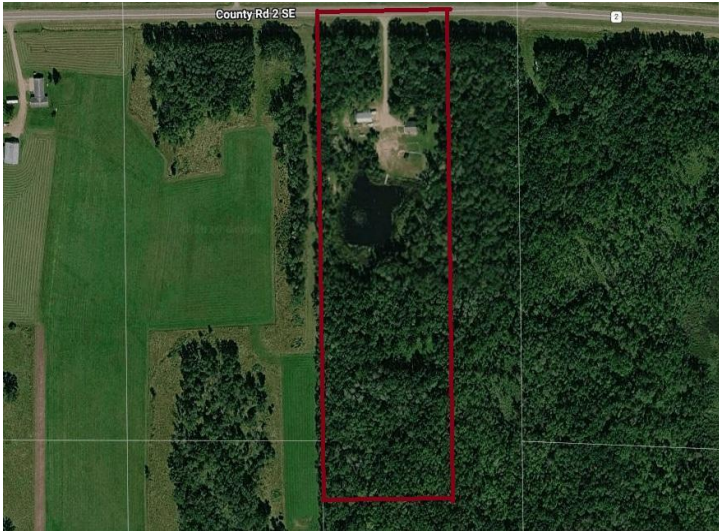
\$369,000
MLS 7100065 Residential
18405 CR-2
Brainerd MN 56401



website: www.AffinityRealEstate.com | email: info@affinityrealestate.com | office: 218-237-3333 | fax: 218-237-3377

Affinity
REAL ESTATE INC

\$369,000
MLS 7100065 Residential
18405 CR-2
Brainerd MN 56401



website: www.AffinityRealEstate.com | email: info@affinityrealestate.com | office: 218-237-3333 | fax:218-237-3377

Affinity
REAL ESTATE INC

\$369,000
MLS 7100065 Residential
18405 CR-2
Brainerd MN 56401