



MLS 7100116 Land

\$69,900

2.08 Acres
Raw Land

23344 Sleepy Hollow Court
Sebeka MN 56477

Status: Active

Description:

Welcome to 'Sleepy Hollow'. This is a new and beautiful development exclusive to Nimrod, MN. Tucked away in the pines is this brand new 14x32 cabin/bunkhouse where the heavy lifting is done and it is ready to be finished to your liking. It features a large open space (ideal for L/R & KIT), a bonus room, 3/4 bath, lofts on both ends, roughed-in electric, spray-foamed walls and a covered front porch. A 1,500-gallon holding tank, drilled well and electric are stubbed in to the unit. Fiber optic internet is available along the property boundary. This is a perfect Northwood's hideout located in a recreational hotspot. Sits on 2+ acres loaded in Norway pines. No restrictive covenants. Nimrod is a fun little town home to the famous Bull Bash, Jubilee Days and the ever popular Nimrod Bar and Grill.

Additional Details:

Lot Acres	2.08
Lot Dimensions	346 x 283 x 301 x 278
School District	820
Taxes	\$36
Taxes with Assessments	\$106
Tax Year	2026

Additional Features:

Driving Directions:

As you enter Nimrod from the West take the right just before the Nimrod Lutheran Church. This is a short stretch that turns into Sleepy Hollow Ct. Proceed to property on left.



Listed By:
Affinity Real Estate Inc.

Affinity Real Estate Inc. participates in the Regional Multiple Listing Service of Minnesota, Inc Broker Reciprocity (sm) program, allowing us to display other broker's listings on our website. All properties are subject to prior sale, change or withdrawal.



Call Affinity Real Estate

218-237-3333

info@affinityrealestate.com



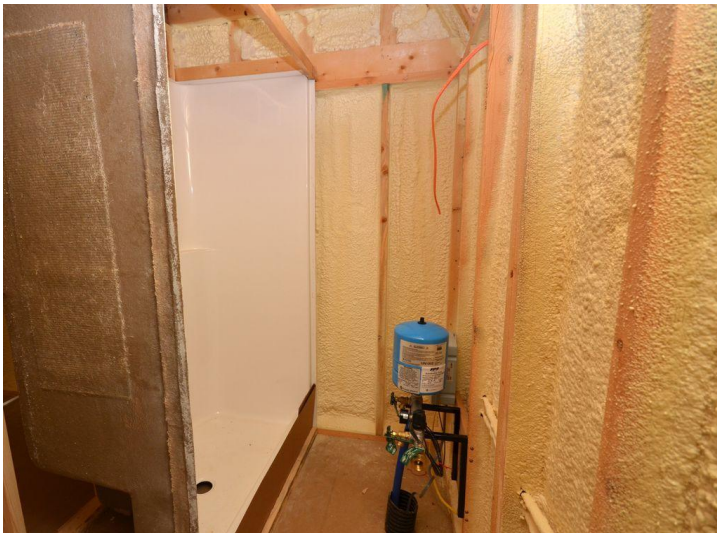
Affinity Real Estate - 600 Park Avenue South - Park Rapids MN 56470



website: www.AffinityRealEstate.com | email: info@affinityrealestate.com | office: 218-237-3333 | fax:218-237-3377



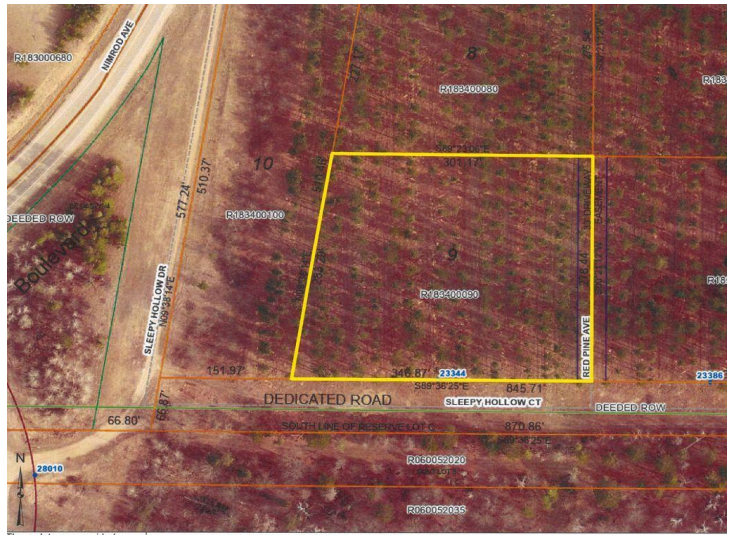
\$69,900
MLS 7100116 Land
23344 Sleepy Hollow Court
Sebeka MN 56477



website: www.AffinityRealEstate.com | email: info@affinityrealestate.com | office: 218-237-3333 | fax:218-237-3377



\$69,900
MLS 7100116 Land
23344 Sleepy Hollow Court
Sebeka MN 56477



website: www.AffinityRealEstate.com | email: info@affinityrealestate.com | office: 218-237-3333 | fax: 218-237-3377



\$69,900
 MLS 7100116 Land
 23344 Sleepy Hollow Court
 Sebeka MN 56477