



MLS 7100126 Residential

\$299,900

1,362 sq ft
3 bedrooms
2 baths

36811 235th Avenue
Browerville MN 56438

Status: Active

Description:

Looking for the perfect hobby farm with room to grow? You've found it! Nestled on a beautiful acreage, this charming property offers plenty of space for horses, livestock, chickens, or all your favorite farm animals while providing the peace and privacy of country living. The inviting 3-bedroom, 2-bathroom home features a spacious living room with a vaulted ceiling and cozy fireplace, creating a warm and welcoming gathering space. The dining room showcases hardwood floors, while the kitchen offers a convenient pass-through window, breakfast bar, ample cabinet space, and all appliances are included. A newer roof provides added peace of mind, and the full unfinished basement offers abundant storage or the opportunity to expand your living space to fit your needs. Outside, you'll find everything you need to support your hobby farm or rural lifestyle. Two large outbuildings (32x64 and 26x48) provide exceptional space for equipment, hay, livestock, workshops, or additional storage. The acreage offers endless possibilities for gardening, recreation, or simply enjoying the open countryside. New septic mound system in 2025. Whether you're dreaming of starting a hobby farm, need room for your toys and equipment, or simply want to enjoy the tranquility of country living, this property is ready to welcome you home. Don't miss this wonderful opportunity to make your hobby farm dreams a reality!

Additional Details:

Year Built	1954
Lot Acres	12.5
Lot Dimensions	547x993
Garage Stalls	3
School District	787
Taxes	\$2,968
Taxes with Assessments	\$2,968
Tax Year	2025

Additional Features:

Basement: Full, Unfinished **Fuel:** Other **Garage:** 3 **Heat:** Fireplace(s), Other **Sewer:** Mound Septic, Private Sewer **Water:** Well **Air Conditioning:** None

Driving Directions:

US-71 to North on Co Rd 21, Left on Co Rd 20, Right on 235th Ave,



Listed By:
RE/MAX Results

Affinity Real Estate Inc. participates in the Regional Multiple Listing Service of Minnesota, Inc Broker Reciprocity (sm) program, allowing us to display other broker's listings on our website. All properties are subject to prior sale, change or withdrawal.



Call Affinity Real Estate

218-237-3333

info@affinityrealestate.com



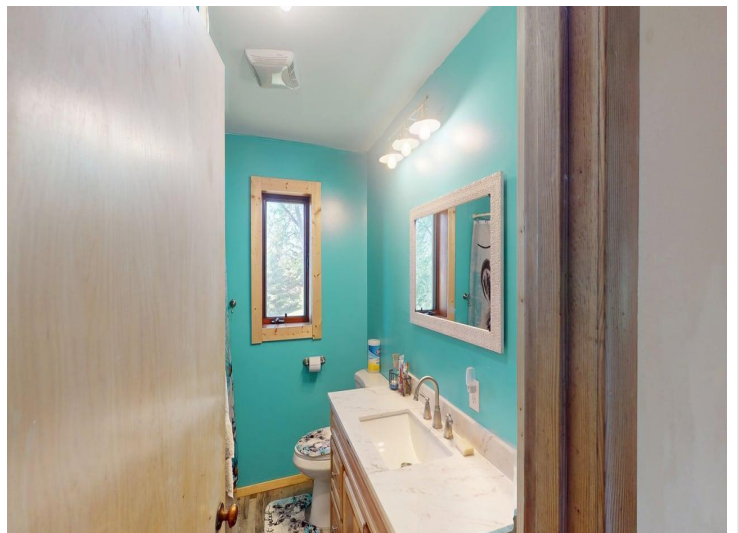
Affinity Real Estate - 600 Park Avenue South - Park Rapids MN 56470



website: www.AffinityRealEstate.com | email: info@affinityrealestate.com | office: 218-237-3333 | fax:218-237-3377



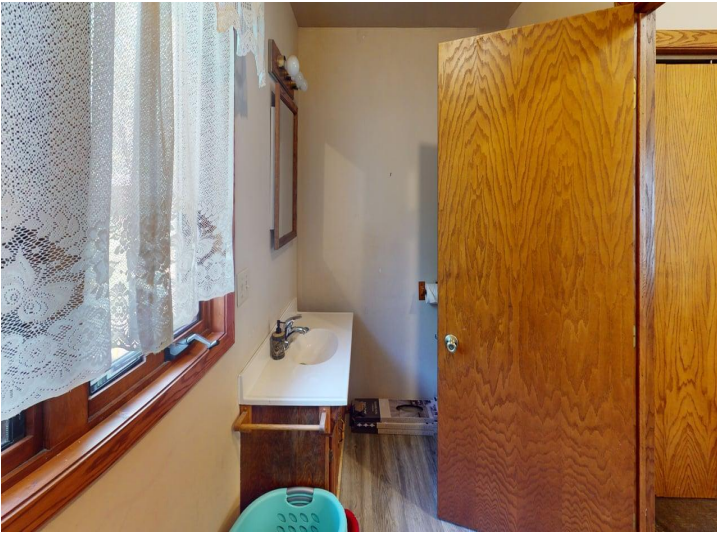
\$299,900
MLS 7100126 Residential
36811 235th Avenue
Browerville MN 56438



website: www.AffinityRealEstate.com | email: info@affinityrealestate.com | office: 218-237-3333 | fax:218-237-3377

Affinity
REAL ESTATE INC

\$299,900
MLS 7100126 Residential
36811 235th Avenue
Browerville MN 56438



website: www.AffinityRealEstate.com | email: info@affinityrealestate.com | office: 218-237-3333 | fax:218-237-3377



\$299,900
MLS 7100126 Residential
36811 235th Avenue
Browerville MN 56438



website: www.AffinityRealEstate.com | email: info@affinityrealestate.com | office: 218-237-3333 | fax:218-237-3377



\$299,900
MLS 7100126 Residential
36811 235th Avenue
Browerville MN 56438