



MLS 7100278 Lake Home

\$439,000

2,048 sq ft
3 bedrooms
2 baths

6525 County Road 58
Outing MN 56662

Waterfront: Lawrence

Status: Active

Description:

Rare opportunity to own an affordable lakefront cabin/home on beautiful Lawrence Lake! This property offers incredible potential for the right buyer and presents a unique opportunity to create the lake home of your dreams. The home requires some finishing touches, including flooring, sheetrock repairs in select areas, and completion of a second bathroom. The current owner has enjoyed this property for many years and simply never completed all of the planned updates.

The main level features a spacious center-island kitchen with abundant cabinetry and countertop space, a large dining area, a stunning 23' x 19' great room with dramatic scissor-vaulted ceilings and a gas fireplace, two main-floor bedrooms, an updated 3/4 bath, and convenient main-floor laundry. The upper level showcases a dramatic loft design with a generous third bedroom featuring another scissor vault, a private captain's deck overlooking the lake—perfect for enjoying your morning coffee with peaceful water views—a spacious loft area ideal for an office, family room, exercise space, or playroom, an unfinished full bathroom awaiting your personal touch, and a large storage closet.

The unfinished walkout lower level offers endless possibilities for expansion and additional living space. Throughout the home, you'll enjoy abundant natural light and tranquil views of Lawrence Lake.

Outdoor enthusiasts will appreciate the excellent fishing, organized ATV and snowmobile events, and miles of nearby recreational trails. The large wraparound deck provides plenty of space for entertaining and relaxing. Approximately 80 feet of level lakeshore includes a dock (the white section of the existing dock system; boat lift available separately). Please note that the seller's sister owns the adjacent property, and the current dock configuration will be separated according to the buyer's preference prior to closing.

A convenient storage shed provides ample room for all your lake toys and accessories. Don't miss this affordable opportunity to own on the sought-after Lawrence/Roosevelt Lake chain, with channel access from Lawrence to Roosevelt, in the charming community of Outing!

Additional Details:

Year Built 1999
Lot Acres 0.57

	Listed By	80x110x98x56x181x108
	Lake Real Estate	118
Affinity Real Estate Inc. participates in the Regional Multiple Listing Service of Minnesota, Inc Broker Reciprocity (sm) program, allowing Taxes with Assessments listings on our website. All properties are subject to prior sale, change or withdrawal.		
Tax Year	2026	



Call Affinity Real Estate
218-237-3333
info@affinityrealestate.com



Affinity Real Estate - 600 Park Avenue South - Park Rapids MN 56470

Basement: Crawl Space, Partial, Storage Space, Unfinished, Walkout **Fuel:** Propane **Heat:** Forced Air **Sewer:** Private Sewer **Water:** Private, Well **Air Conditioning:** Central Air



website: www.AffinityRealEstate.com | email: info@affinityrealestate.com | office: 218-237-3333 | fax: 218-237-3377

Affinity
REAL ESTATE INC

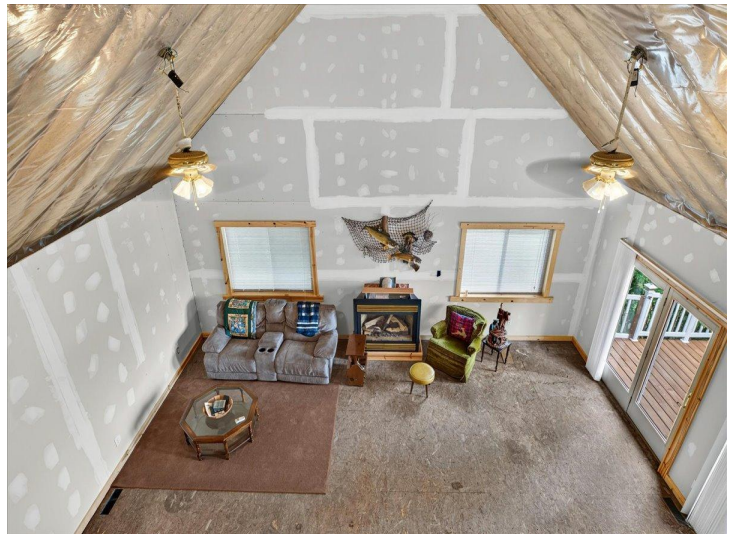
\$439,000
MLS 7100278 Lake Home
6525 County Road 58
Outing MN 56662



website: www.AffinityRealEstate.com | email: info@affinityrealestate.com | office: 218-237-3333 | fax:218-237-3377

Affinity
REAL ESTATE INC

\$439,000
MLS 7100278 Lake Home
6525 County Road 58
Outing MN 56662



website: www.AffinityRealEstate.com | email: info@affinityrealestate.com | office: 218-237-3333 | fax: 218-237-3377

Affinity
REAL ESTATE INC

\$439,000
MLS 7100278 Lake Home
6525 County Road 58
Outing MN 56662



website: www.AffinityRealEstate.com | email: info@affinityrealestate.com | office: 218-237-3333 | fax:218-237-3377



\$439,000
MLS 7100278 Lake Home
6525 County Road 58
Outing MN 56662

website: www.AffinityRealEstate.com | email: info@affinityrealestate.com | office: 218-237-3333 | fax:218-237-3377



\$439,000

MLS 7100278 Lake Home
6525 County Road 58
Outing MN 56662