



MLS 7100323 Land

**\$47,500**

1.07 Acres  
Raw Land

TBD Schuelke Beach Road  
Miltona MN 56354

Status: Active

**Description:**

Enjoy sunrise and sunset views from this 1.07 acre rural level lot. The West Lake Miltona public access is just over a mile away for a great day of fishing & boating on one of the areas most popular lakes! You are also only 20 minutes north of historic downtown Alexandria, close to Lake Carlos State Park, local wineries, golf courses and all of the other area lakes. Stake your claim today!

**Additional Details:**

Lot Acres	1.07
Lot Dimensions	150 x 307 x 150 x 321
School District	206
Taxes	\$200
Taxes with Assessments	\$838
Tax Year	2026

**Additional Features:**

**Driving Directions:**

Douglas County 5 to N on Spring Lake Rd NW, Rt on Bourbon St Rd NW, Rt on Schuelke Beach Rd NW. Property is .3 mi on the Rt.



Listed By:  
ALO Realty Advisors

Affinity Real Estate Inc. participates in the Regional Multiple Listing Service of Minnesota, Inc Broker Reciprocity (sm) program, allowing us to display other broker's listings on our website. All properties are subject to prior sale, change or withdrawal.



Call Affinity Real Estate

**218-237-3333**

[info@affinityrealestate.com](mailto:info@affinityrealestate.com)



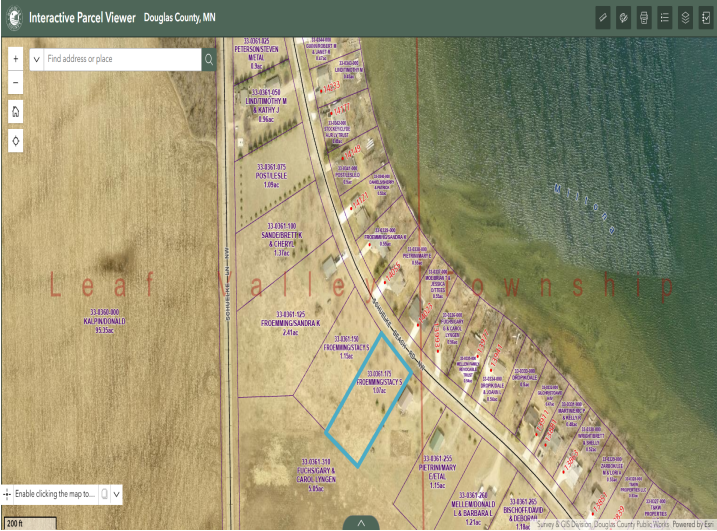
Affinity Real Estate - 600 Park Avenue South - Park Rapids MN 56470



website: [www.AffinityRealEstate.com](http://www.AffinityRealEstate.com) | email: [info@affinityrealestate.com](mailto:info@affinityrealestate.com) | office: 218-237-3333 | fax:218-237-3377



**\$47,500**  
MLS 7100323 Land  
TBD Schuelke Beach Road  
Miltona MN 56354



website: [www.AffinityRealEstate.com](http://www.AffinityRealEstate.com) | email: [info@affinityrealestate.com](mailto:info@affinityrealestate.com) | office: 218-237-3333 | fax:218-237-3377



**\$47,500**  
 MLS 7100323 Land  
 TBD Schuelke Beach Road  
 Miliona MN 56354