



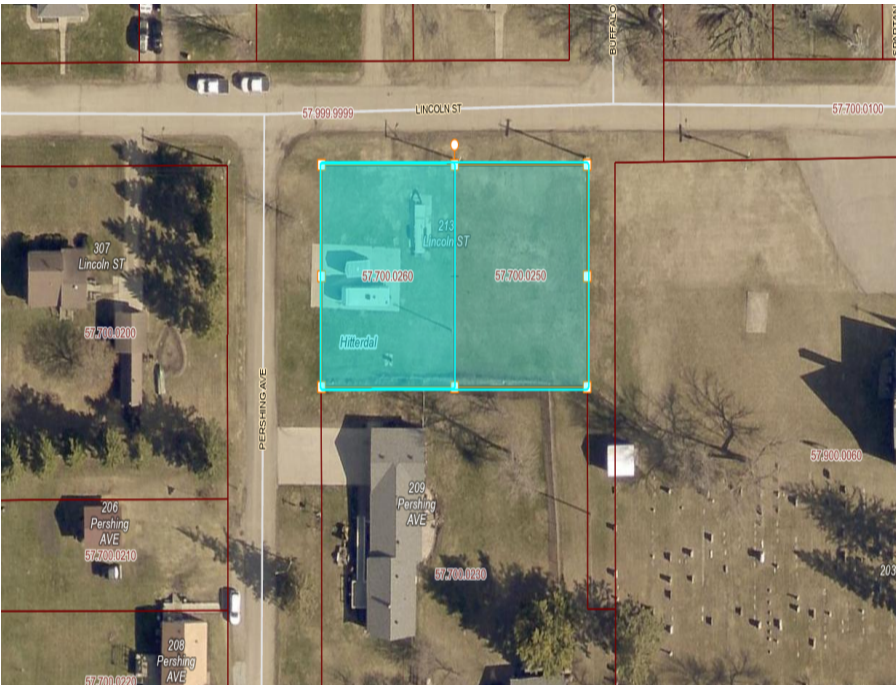
MLS 7100366 Land

**\$35,000**

0.39 Acres  
Finished Lot(s)

213 Lincoln Street  
Hitterdal MN 56552

Status: Active



**Description:**

Here is a chance to own two adjacent lots in Hitterdal, both with utilities already present, one with a new slab poured and ready for a manufactured home or building of your choice (check local ordinances). Slab is app. 58' long x 28' deep. There is also a smaller slab that had a 1-stall garage. Asking price is for BOTH lots combined!

**Additional Details:**

Lot Acres	0.39
Lot Dimensions	Approx. 170' x 100'
School District	914
Taxes	\$68
Taxes with Assessments	\$68
Tax Year	2026

**Additional Features:**

**Driving Directions:**

From MN Hwy 32, turn west on Lincoln St. and travel 2 blocks. Parcels are on south side between Buffalo Ave. and Pershing Ave. Located on south side of Lincoln St.



Listed By:  
Park Co., REALTORS®

Affinity Real Estate Inc. participates in the Regional Multiple Listing Service of Minnesota, Inc Broker Reciprocity (sm) program, allowing us to display other broker's listings on our website. All properties are subject to prior sale, change or withdrawal.



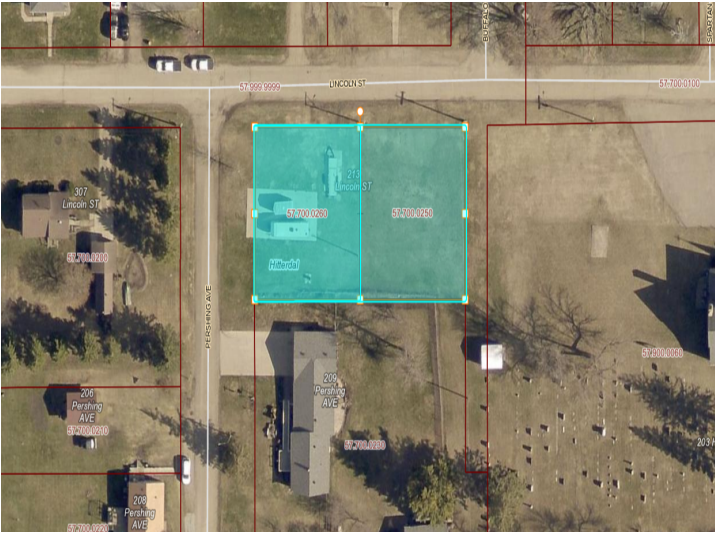
Call Affinity Real Estate

**218-237-3333**

[info@affinityrealestate.com](mailto:info@affinityrealestate.com)



Affinity Real Estate - 600 Park Avenue South - Park Rapids MN 56470



website: [www.AffinityRealEstate.com](http://www.AffinityRealEstate.com) | email: [info@affinityrealestate.com](mailto:info@affinityrealestate.com) | office: 218-237-3333 | fax:218-237-3377



**\$35,000**  
MLS 7100366 Land  
213 Lincoln Street  
Hitterdal MN 56552