



MLS 7100535 Lake Home

\$825,000

1,428 sq ft
2 bedrooms
2 baths

14152 S E Turtle Lake Road
Lake Park MN 56554

Waterfront: Turtle

Status: Active

Description:

TURTLE LAKE: Unique opportunity to own a beautiful, freshly updated, two bed, two bath year-round lake home, plus a nice guest house on a level lot with 140 feet of beautiful sand beach. Situated on the southeast shore of Turtle Lake, this well maintained 1,428 square foot home has a bright, open living and dining room with excellent lake views, a freshly updated kitchen, main bath and bedroom on the main floor. The second floor hosts a private master suite with 3/4 bath, sitting area and private deck overlooking the lake. A covered breezeway leads to a heated and finished garage, perfect for entertaining or storage. Stroll next door and you will find a quaint 720 square foot guest house. The guest house main floor has a bright, spacious kitchen, dining room, living room and 3/4 bath. The upstairs loft has space to sleep four. All furniture and furnishings in the home, guest house and the dock are included. All this located less than 45 minutes from the FM Metro on paved roads.

Additional Details:

Year Built	1978
Lot Acres	1.9
Lot Dimensions	140- Irregular
Garage Stalls	1
School District	2889
Taxes	\$4,948
Taxes with Assessments	\$4,948
Tax Year	2026

Additional Features:

Basement: Crawl Space **Fuel:** Electric, Propane **Garage:** 1 **Heat:** Forced Air, Fireplace(s) **Sewer:** Tank with Drainage Field **Water:** 4-Inch Submersible, Well **Air Conditioning:** Central Air

Driving Directions:

From Highway 10: South on Becker #1 9 miles to 140th St. West on 140th to S E Turtle Lake Rd. North on SE Turtle Lake Rd to property



Listed By:
Cormorant Realty

Affinity Real Estate Inc. participates in the Regional Multiple Listing Service of Minnesota, Inc Broker Reciprocity (sm) program, allowing us to display other broker's listings on our website. All properties are subject to prior sale, change or withdrawal.



Call Affinity Real Estate

218-237-3333

info@affinityrealestate.com



Affinity Real Estate - 600 Park Avenue South - Park Rapids MN 56470



website: www.AffinityRealEstate.com | email: info@affinityrealestate.com | office: 218-237-3333 | fax:218-237-3377

Affinity
REAL ESTATE INC

\$825,000
MLS 7100535 Lake Home
14152 S E Turtle Lake Road
Lake Park MN 56554



website: www.AffinityRealEstate.com | email: info@affinityrealestate.com | office: 218-237-3333 | fax:218-237-3377

Affinity
REAL ESTATE INC

\$825,000
MLS 7100535 Lake Home
14152 S E Turtle Lake Road
Lake Park MN 56554



website: www.AffinityRealEstate.com | email: info@affinityrealestate.com | office: 218-237-3333 | fax:218-237-3377

Affinity
REAL ESTATE INC

\$825,000
MLS 7100535 Lake Home
14152 S E Turtle Lake Road
Lake Park MN 56554



website: www.AffinityRealEstate.com | email: info@affinityrealestate.com | office: 218-237-3333 | fax: 218-237-3377

Affinity
REAL ESTATE INC

\$825,000
MLS 7100535 Lake Home
14152 S E Turtle Lake Road
Lake Park MN 56554



website: www.AffinityRealEstate.com | email: info@affinityrealestate.com | office: 218-237-3333 | fax:218-237-3377



\$825,000
MLS 7100535 Lake Home
14152 S E Turtle Lake Road
Lake Park MN 56554



website: www.AffinityRealEstate.com | email: info@affinityrealestate.com | office: 218-237-3333 | fax:218-237-3377



\$825,000
MLS 7100535 Lake Home
14152 S E Turtle Lake Road
Lake Park MN 56554



website: www.AffinityRealEstate.com | email: info@affinityrealestate.com | office: 218-237-3333 | fax: 218-237-3377

Affinity
REAL ESTATE INC

\$825,000
MLS 7100535 Lake Home
14152 S E Turtle Lake Road
Lake Park MN 56554



website: www.AffinityRealEstate.com | email: info@affinityrealestate.com | office: 218-237-3333 | fax: 218-237-3377

Affinity
REAL ESTATE INC

\$825,000
MLS 7100535 Lake Home
14152 S E Turtle Lake Road
Lake Park MN 56554



website: www.AffinityRealEstate.com | email: info@affinityrealestate.com | office: 218-237-3333 | fax:218-237-3377



\$825,000
MLS 7100535 Lake Home
14152 S E Turtle Lake Road
Lake Park MN 56554



website: www.AffinityRealEstate.com | email: info@affinityrealestate.com | office: 218-237-3333 | fax: 218-237-3377

Affinity
REAL ESTATE INC

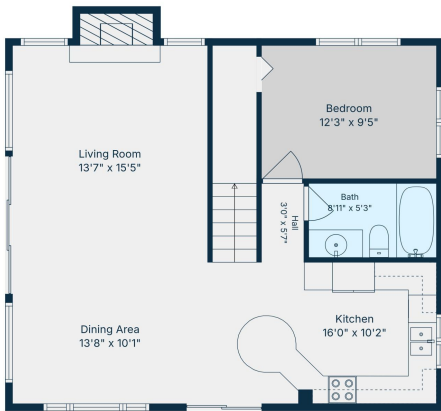
\$825,000
MLS 7100535 Lake Home
14152 S E Turtle Lake Road
Lake Park MN 56554



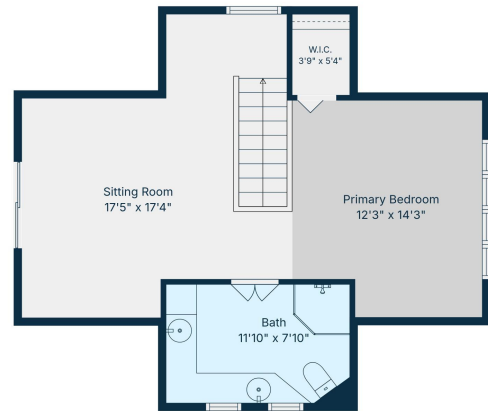
website: www.AffinityRealEstate.com | email: info@affinityrealestate.com | office: 218-237-3333 | fax:218-237-3377



\$825,000
MLS 7100535 Lake Home
14152 S E Turtle Lake Road
Lake Park MN 56554



TOTAL: 1317 sq. ft.
 1st floor: 759 sq. ft. 2nd floor: 558 sq. ft.
 EXCLUDED AREAS: FIREPLACE: 14 sq. ft. WALLS: 110 sq. ft.
Plan Photo Courtesy: iStockphoto.com, Measurements Provided by Seller and Not Guaranteed

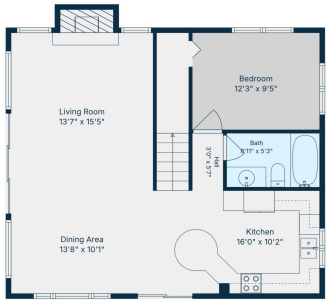


TOTAL: 1317 sq. ft.
 1st floor: 759 sq. ft. 2nd floor: 558 sq. ft.
 EXCLUDED AREAS: FIREPLACE: 14 sq. ft. WALLS: 110 sq. ft.
Plan Photo Courtesy: iStockphoto.com, Measurements Provided by Seller and Not Guaranteed

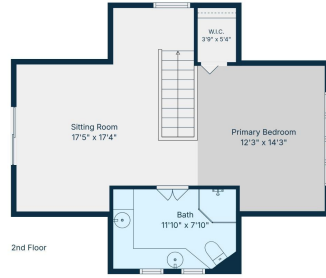
website: www.AffinityRealEstate.com | email: info@affinityrealestate.com | office: 218-237-3333 | fax: 218-237-3377



\$825,000
 MLS 7100535 Lake Home
 14152 S E Turtle Lake Road
 Lake Park MN 56554

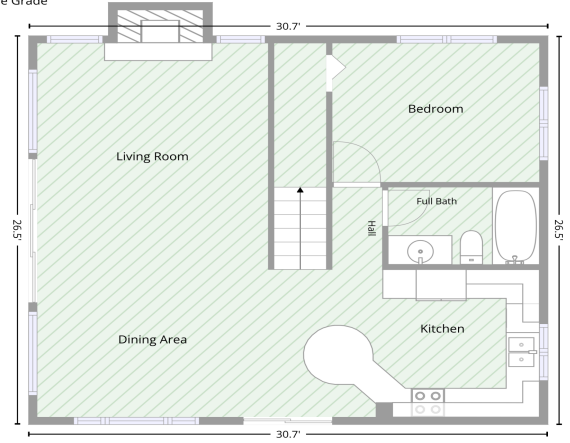


1st Floor



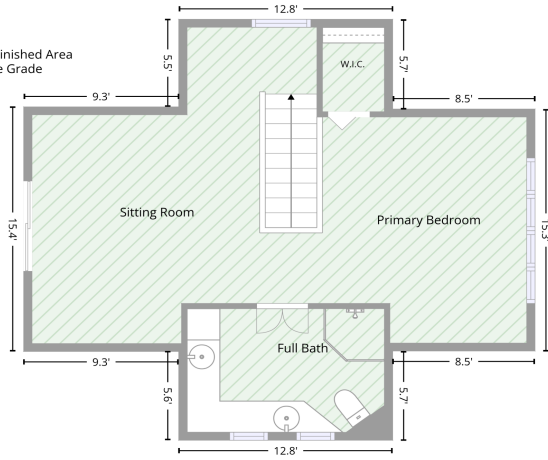
2nd Floor

813 sq. ft Finished Area Above Grade



TOTAL: 1317 sq. ft.
 1st floor: 759 sq. ft. 2nd floor: 558 sq. ft.
 EXCLUDED AREAS: FIREPLACE: 14 sq. ft. WALLS: 110 sq. ft.
 Floor Plan Created By: iGloo.com App. Measurements Deemed Highly Reliable But Not Guaranteed.

614 sq. ft Finished Area Above Grade



website: www.AffinityRealEstate.com | email: info@affinityrealestate.com | office: 218-237-3333 | fax: 218-237-3377



\$825,000
 MLS 7100535 Lake Home
 14152 S E Turtle Lake Road
 Lake Park MN 56554