



MLS 7100543 Residential

\$209,900

1,224 sq ft
3 bedrooms
1 baths

1103 10th Street
Brainerd MN 56401

Status: Active

Description:

Welcome to this well-maintained 3-bedroom, 1-bath home in the heart of Brainerd! Situated on a large lot, this property offers a private fenced backyard with a spacious deck perfect for relaxing, entertaining, or enjoying summer evenings. The oversized 2-car garage provides ample room for vehicles, storage, and hobbies. Inside, the home is filled with abundant natural sunlight, creating a warm and inviting atmosphere throughout. Recent updates include a new furnace, added insulation in the attic, spray foam insulation in basement, and new flooring in the living room, dining room and bathroom. The backyard is adjacent to a walking trail, offering added privacy and easy access to outdoor recreation. Conveniently located near shopping, schools, restaurants, and many other amenities, this home combines comfort, convenience, and affordability. Don't miss this fantastic opportunity!

Additional Details:

Year Built	1920
Lot Acres	0.34
Lot Dimensions	150x100
Garage Stalls	2
School District	181
Taxes	\$1,331
Taxes with Assessments	\$1,356
Tax Year	2026

Additional Features:

Basement: Block, Full, Storage Space **Fuel:** Natural Gas **Garage:** 2 **Heat:** Forced Air **Sewer:** City Sewer/Connected **Water:** City Water/Connected **Air Conditioning:** Window Unit(s)

Driving Directions:

371 / South 6th St to Oak St to right on South 8th St to left on Lake St to right on S 10th St to property on left



Listed By:
Realty ONE Group Choice

Affinity Real Estate Inc. participates in the Regional Multiple Listing Service of Minnesota, Inc Broker Reciprocity (sm) program, allowing us to display other broker's listings on our website. All properties are subject to prior sale, change or withdrawal.



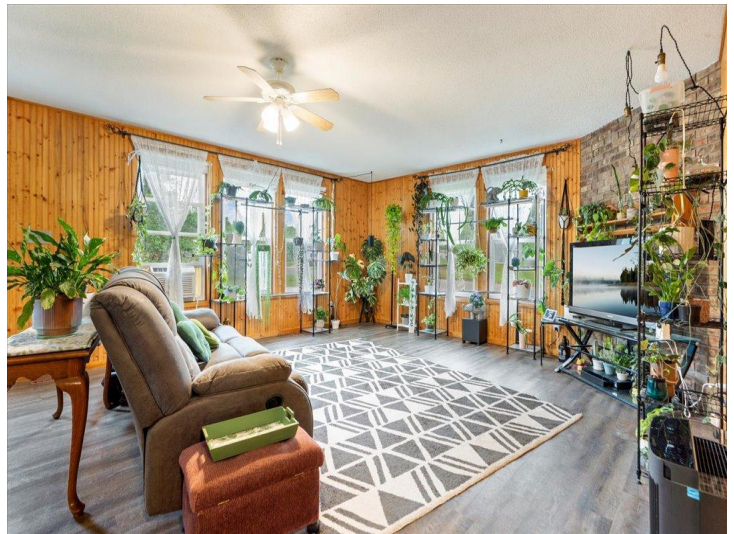
Call Affinity Real Estate

218-237-3333

info@affinityrealestate.com



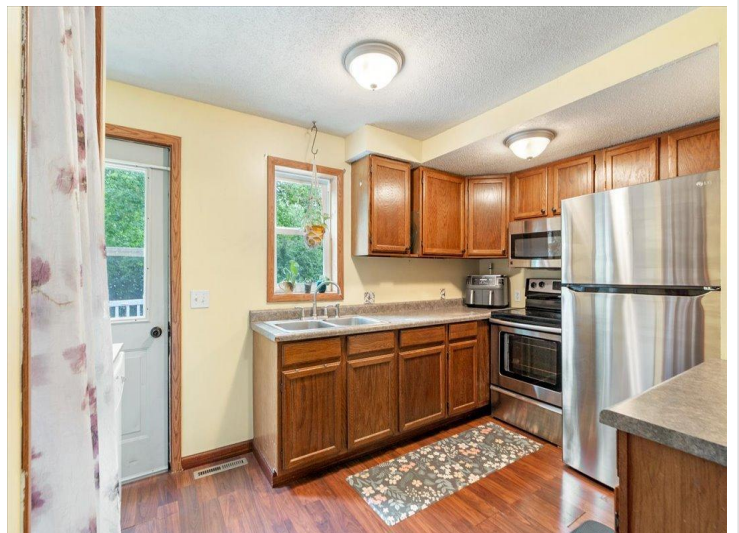
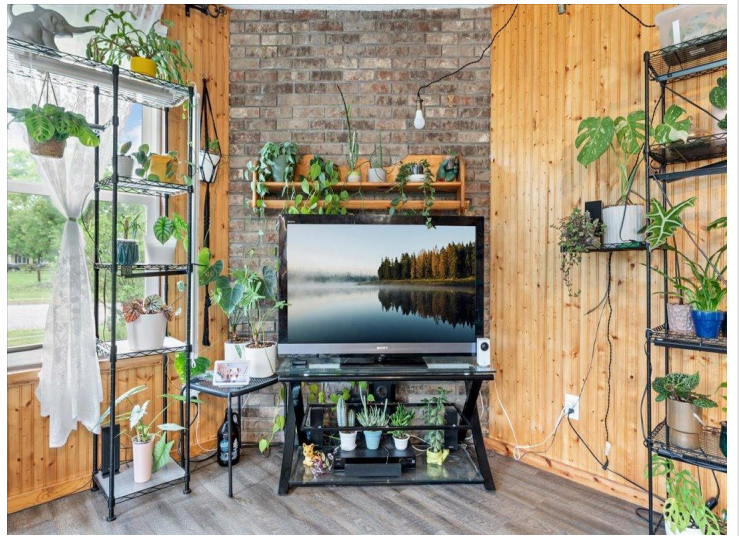
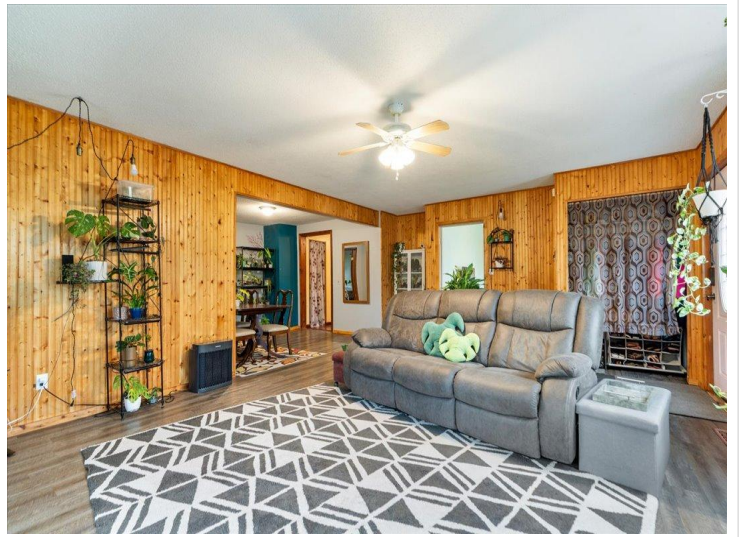
Affinity Real Estate - 600 Park Avenue South - Park Rapids MN 56470



website: www.AffinityRealEstate.com | email: info@affinityrealestate.com | office: 218-237-3333 | fax:218-237-3377

Affinity
REAL ESTATE INC

\$209,900
MLS 7100543 Residential
1103 10th Street
Brainerd MN 56401



website: www.AffinityRealEstate.com | email: info@affinityrealestate.com | office: 218-237-3333 | fax:218-237-3377

Affinity
REAL ESTATE INC

\$209,900
MLS 7100543 Residential
1103 10th Street
Brainerd MN 56401



website: www.AffinityRealEstate.com | email: info@affinityrealestate.com | office: 218-237-3333 | fax: 218-237-3377

Affinity
REAL ESTATE INC

\$209,900
MLS 7100543 Residential
1103 10th Street
Brainerd MN 56401



website: www.AffinityRealEstate.com | email: info@affinityrealestate.com | office: 218-237-3333 | fax:218-237-3377

Affinity
REAL ESTATE INC

\$209,900
MLS 7100543 Residential
1103 10th Street
Brainerd MN 56401



website: www.AffinityRealEstate.com | email: info@affinityrealestate.com | office: 218-237-3333 | fax: 218-237-3377



\$209,900
MLS 7100543 Residential
1103 10th Street
Brainerd MN 56401