



MLS 7100624 Residential

\$175,000

945 sq ft
2 bedrooms
1 baths

219 Gillis Avenue
Brainerd MN 56401

Status: Active

Description:

Welcome home! Nestled among mature pines, this well-maintained home offers privacy, charm, and exceptional value. The beautiful yard, enhanced by decorative rock wall accents, provides the perfect space to relax or entertain. Inside, you'll appreciate generous storage and a long list of updates, including the roof, siding, windows, fresh paint, some flooring, and more. Conveniently located near schools, shopping, and local amenities, this move-in-ready home combines comfort, affordability, and a location you'll love.

Additional Details:

Year Built	1924
Lot Acres	0.14
Lot Dimensions	50 x 120
School District	181
Taxes	\$1,381
Taxes with Assessments	\$1,406
Tax Year	2026

Additional Features:

Basement: Block, Egress Window(s), Full, Partially Finished, Storage Space, Walkout **Fuel:** Natural Gas **Heat:** Boiler, Hot Water, Other **Sewer:** City Sewer/Connected **Water:** City Water/Connected **Air Conditioning:** Ductless Mini-Split

Driving Directions:

East on Highway #210 to left on Gillis Ave, to property on the left.



Listed By:
Edina Realty, Inc.

Affinity Real Estate Inc. participates in the Regional Multiple Listing Service of Minnesota, Inc Broker Reciprocity (sm) program, allowing us to display other broker's listings on our website. All properties are subject to prior sale, change or withdrawal.



Call Affinity Real Estate

218-237-3333

info@affinityrealestate.com



Affinity Real Estate - 600 Park Avenue South - Park Rapids MN 56470



website: www.AffinityRealEstate.com | email: info@affinityrealestate.com | office: 218-237-3333 | fax: 218-237-3377

Affinity
REAL ESTATE INC

\$175,000
MLS 7100624 Residential
219 Gillis Avenue
Brainerd MN 56401



website: www.AffinityRealEstate.com | email: info@affinityrealestate.com | office: 218-237-3333 | fax:218-237-3377

Affinity
REAL ESTATE INC

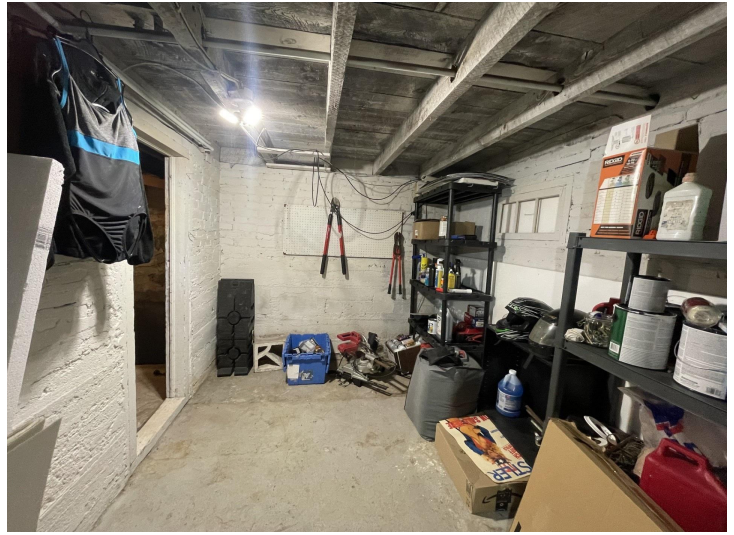
\$175,000
MLS 7100624 Residential
219 Gillis Avenue
Brainerd MN 56401



website: www.AffinityRealEstate.com | email: info@affinityrealestate.com | office: 218-237-3333 | fax:218-237-3377

Affinity
REAL ESTATE INC

\$175,000
MLS 7100624 Residential
219 Gillis Avenue
Brainerd MN 56401



website: www.AffinityRealEstate.com | email: info@affinityrealestate.com | office: 218-237-3333 | fax:218-237-3377

Affinity
REAL ESTATE INC

\$175,000
MLS 7100624 Residential
219 Gillis Avenue
Brainerd MN 56401



website: www.AffinityRealEstate.com | email: info@affinityrealestate.com | office: 218-237-3333 | fax:218-237-3377



\$175,000
MLS 7100624 Residential
219 Gillis Avenue
Brainerd MN 56401