



MLS 7100641 Residential

**\$595,000**

4,760 sq ft  
4 bedrooms  
4 baths

25395 County Highway 6  
Detroit Lakes MN 56501

Status: Active

**Description:**

This absolute gem of a home situated on 2 gorgeous acres is located adjacent to city limits. The home features an amazing owner suite complete with his and hers full bathrooms, walk-in closets and a private media area. The home is complete for use as a single-family home, in-law suite or a rentable 2-bedroom complete apartment. Enjoy the comfort of floor heat throughout both levels and a fireplace on both floors for your relaxation and comfort. This is a unique one-of-a-kind design with very high-end finishes. New carpeting, paint and finishes through-out. The home can be purchased separately or all together with the entire property offering a heated, insulated and lined shop and several other storage buildings. Other uses potentially include development property with the beauty of the river on the west edge of the property. Minutes from the city beach and amenities yet providing the privacy you desire and deserve. A new mound septic system is in the process of being installed.

**Additional Details:**

Year Built	2008
Lot Acres	2
Lot Dimensions	irregular
Garage Stalls	3
School District	22
Taxes	\$4,330
Taxes with Assessments	\$3,794
Tax Year	2026

**Additional Features:**

**Basement:** Egress Window(s), Full, Tile Shower, Walkout **Fuel:** Natural Gas **Garage:** 3 **Heat:** Boiler, In-Floor Heating **Sewer:** Tank with Drainage Field **Water:** 4-Inch Submersible **Air Conditioning:** Central Air

**Driving Directions:**

West Lake Drive to County Road 6 property on left.



Listed By:  
The Real Estate Company of Detroit Lakes

Affinity Real Estate Inc. participates in the Regional Multiple Listing Service of Minnesota, Inc Broker Reciprocity (sm) program, allowing us to display other broker's listings on our website. All properties are subject to prior sale, change or withdrawal.



**Call Affinity Real Estate**

**218-237-3333**

**info@affinityrealestate.com**



Affinity Real Estate - 600 Park Avenue South - Park Rapids MN 56470



website: [www.AffinityRealEstate.com](http://www.AffinityRealEstate.com) | email: [info@affinityrealestate.com](mailto:info@affinityrealestate.com) | office: 218-237-3333 | fax:218-237-3377



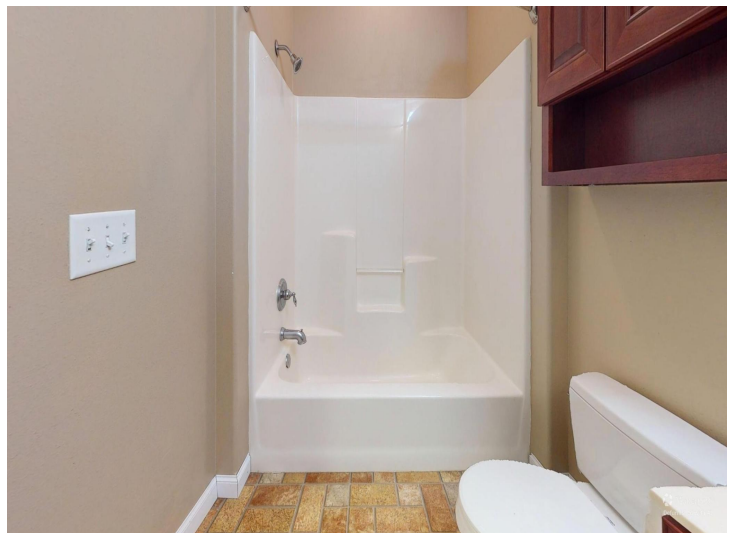
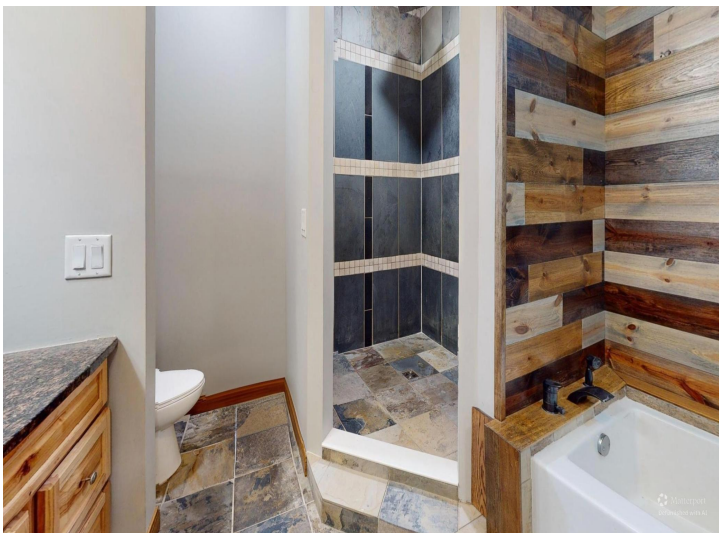
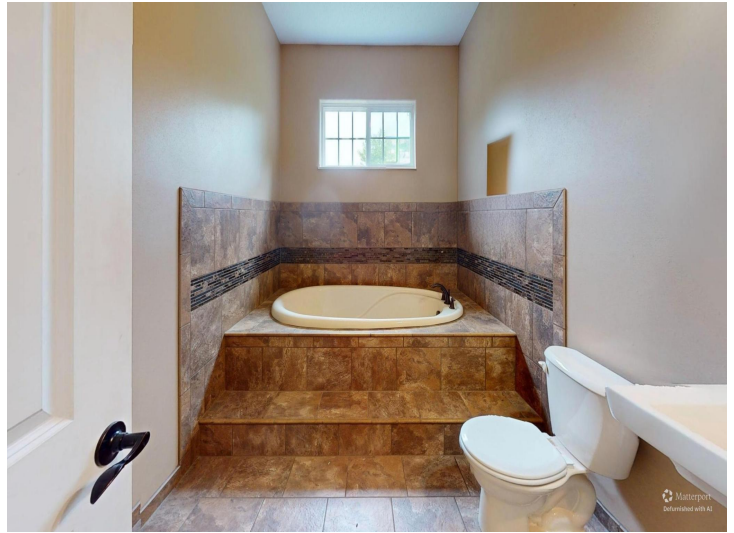
**\$595,000**  
MLS 7100641 Residential  
25395 County Highway 6  
Detroit Lakes MN 56501



website: [www.AffinityRealEstate.com](http://www.AffinityRealEstate.com) | email: [info@affinityrealestate.com](mailto:info@affinityrealestate.com) | office: 218-237-3333 | fax: 218-237-3377

**Affinity**  
REAL ESTATE INC

**\$595,000**  
MLS 7100641 Residential  
25395 County Highway 6  
Detroit Lakes MN 56501



website: [www.AffinityRealEstate.com](http://www.AffinityRealEstate.com) | email: [info@affinityrealestate.com](mailto:info@affinityrealestate.com) | office: 218-237-3333 | fax: 218-237-3377

**Affinity**  
REAL ESTATE INC

**\$595,000**  
MLS 7100641 Residential  
25395 County Highway 6  
Detroit Lakes MN 56501



website: [www.AffinityRealEstate.com](http://www.AffinityRealEstate.com) | email: [info@affinityrealestate.com](mailto:info@affinityrealestate.com) | office: 218-237-3333 | fax: 218-237-3377

**Affinity**  
REAL ESTATE INC

**\$595,000**  
MLS 7100641 Residential  
25395 County Highway 6  
Detroit Lakes MN 56501



website: [www.AffinityRealEstate.com](http://www.AffinityRealEstate.com) | email: [info@affinityrealestate.com](mailto:info@affinityrealestate.com) | office: 218-237-3333 | fax:218-237-3377

**Affinity**  
REAL ESTATE INC

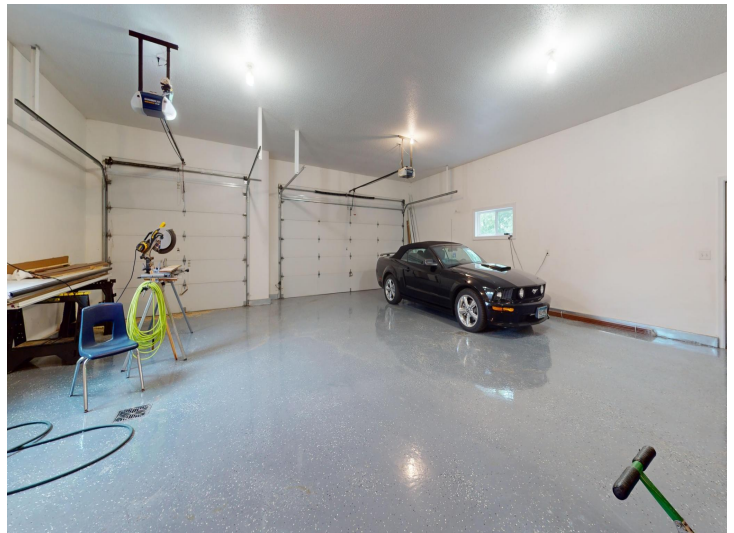
**\$595,000**  
MLS 7100641 Residential  
25395 County Highway 6  
Detroit Lakes MN 56501



website: [www.AffinityRealEstate.com](http://www.AffinityRealEstate.com) | email: [info@affinityrealestate.com](mailto:info@affinityrealestate.com) | office: 218-237-3333 | fax:218-237-3377



**\$595,000**  
MLS 7100641 Residential  
25395 County Highway 6  
Detroit Lakes MN 56501



website: [www.AffinityRealEstate.com](http://www.AffinityRealEstate.com) | email: [info@affinityrealestate.com](mailto:info@affinityrealestate.com) | office: 218-237-3333 | fax:218-237-3377



**\$595,000**  
MLS 7100641 Residential  
25395 County Highway 6  
Detroit Lakes MN 56501



website: [www.AffinityRealEstate.com](http://www.AffinityRealEstate.com) | email: [info@affinityrealestate.com](mailto:info@affinityrealestate.com) | office: 218-237-3333 | fax:218-237-3377

**Affinity**  
REAL ESTATE INC

**\$595,000**  
MLS 7100641 Residential  
25395 County Highway 6  
Detroit Lakes MN 56501



website: [www.AffinityRealEstate.com](http://www.AffinityRealEstate.com) | email: [info@affinityrealestate.com](mailto:info@affinityrealestate.com) | office: 218-237-3333 | fax:218-237-3377



**\$595,000**  
MLS 7100641 Residential  
25395 County Highway 6  
Detroit Lakes MN 56501



website: [www.AffinityRealEstate.com](http://www.AffinityRealEstate.com) | email: [info@affinityrealestate.com](mailto:info@affinityrealestate.com) | office: 218-237-3333 | fax: 218-237-3377

**Affinity**  
REAL ESTATE INC

**\$595,000**  
MLS 7100641 Residential  
25395 County Highway 6  
Detroit Lakes MN 56501



website: [www.AffinityRealEstate.com](http://www.AffinityRealEstate.com) | email: [info@affinityrealestate.com](mailto:info@affinityrealestate.com) | office: 218-237-3333 | fax: 218-237-3377

**Affinity**  
REAL ESTATE INC

**\$595,000**  
MLS 7100641 Residential  
25395 County Highway 6  
Detroit Lakes MN 56501



website: [www.AffinityRealEstate.com](http://www.AffinityRealEstate.com) | email: [info@affinityrealestate.com](mailto:info@affinityrealestate.com) | office: 218-237-3333 | fax:218-237-3377

**Affinity**  
REAL ESTATE INC

**\$595,000**  
MLS 7100641 Residential  
25395 County Highway 6  
Detroit Lakes MN 56501



website: [www.AffinityRealEstate.com](http://www.AffinityRealEstate.com) | email: [info@affinityrealestate.com](mailto:info@affinityrealestate.com) | office: 218-237-3333 | fax:218-237-3377

**Affinity**  
REAL ESTATE INC

**\$595,000**  
MLS 7100641 Residential  
25395 County Highway 6  
Detroit Lakes MN 56501



website: [www.AffinityRealEstate.com](http://www.AffinityRealEstate.com) | email: [info@affinityrealestate.com](mailto:info@affinityrealestate.com) | office: 218-237-3333 | fax:218-237-3377



**\$595,000**  
MLS 7100641 Residential  
25395 County Highway 6  
Detroit Lakes MN 56501



website: [www.AffinityRealEstate.com](http://www.AffinityRealEstate.com) | email: [info@affinityrealestate.com](mailto:info@affinityrealestate.com) | office: 218-237-3333 | fax:218-237-3377



**\$595,000**

MLS 7100641 Residential  
25395 County Highway 6  
Detroit Lakes MN 56501