



MLS 7100719 Residential

\$380,000

1,710 sq ft
3 bedrooms
3 baths

22421 380th Street
Laporte MN 56461

Status: Active

Description:

Built in 2020, this 3 bedroom, 3 bath home offers the perfect combination of modern living and a private 10-acre setting. The bright, open main level features a spacious kitchen with a butcher block island, pantry, fireplace, main floor laundry and half bath. Upstairs you'll find all three bedrooms, including a primary suite with a walk-in closet, double vanity, soaking tub and tiled walk-in shower, plus a full bath for the additional bedrooms. The oversized garage features 17' sidewalls, three overhead doors and a loft for additional storage. Step outside to enjoy a peaceful wooded setting with abundant wildlife and direct access to more than 1,800 acres of adjoining tax-forfeited land for hunting, hiking and year-round recreation. Conveniently located between Bemidji, Walker and Lake George with easy access to Highway 200 and US 71. This property has it all!

Additional Details:

Year Built	2020
Lot Acres	10
Lot Dimensions	602x684x602x687
Garage Stalls	3
School District	306
Taxes	\$2,220
Taxes with Assessments	\$2,220
Tax Year	2025

Additional Features:

Basement: None **Fuel:** Propane **Garage:** 3 **Heat:** Dual Fuel/Off Peak, Forced Air, In-Floor Heating **Sewer:** Mound Septic **Water:** Drilled, Private, Well **Air Conditioning:** Central Air

Driving Directions:

From 71/200 intersection head west for 2.5 miles and turn left on 91. Continue for 3/4 mile and property is on the right.



Listed By:
Keller Williams Realty Professionals

Affinity Real Estate Inc. participates in the Regional Multiple Listing Service of Minnesota, Inc Broker Reciprocity (sm) program, allowing us to display other broker's listings on our website. All properties are subject to prior sale, change or withdrawal.



Call Affinity Real Estate

218-237-3333

info@affinityrealestate.com



Affinity Real Estate - 600 Park Avenue South - Park Rapids MN 56470



website: www.AffinityRealEstate.com | email: info@affinityrealestate.com | office: 218-237-3333 | fax: 218-237-3377

Affinity
REAL ESTATE INC

\$380,000
MLS 7100719 Residential
22421 380th Street
Laporte MN 56461



website: www.AffinityRealEstate.com | email: info@affinityrealestate.com | office: 218-237-3333 | fax: 218-237-3377



\$380,000
MLS 7100719 Residential
22421 380th Street
Laporte MN 56461



website: www.AffinityRealEstate.com | email: info@affinityrealestate.com | office: 218-237-3333 | fax:218-237-3377

Affinity
REAL ESTATE INC

\$380,000
MLS 7100719 Residential
22421 380th Street
Laporte MN 56461



website: www.AffinityRealEstate.com | email: info@affinityrealestate.com | office: 218-237-3333 | fax:218-237-3377

Affinity
REAL ESTATE INC

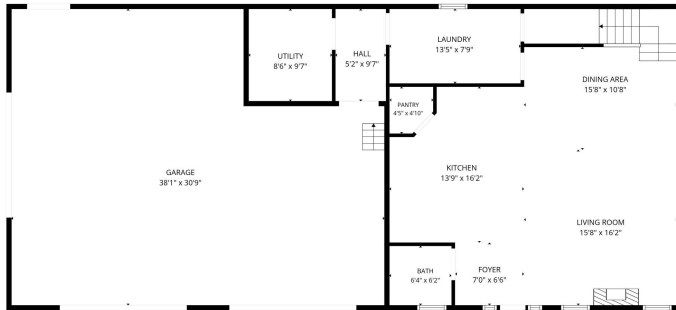
\$380,000
MLS 7100719 Residential
22421 380th Street
Laporte MN 56461



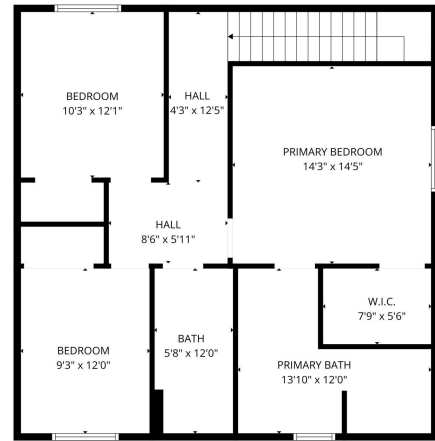
website: www.AffinityRealEstate.com | email: info@affinityrealestate.com | office: 218-237-3333 | fax: 218-237-3377

Affinity
REAL ESTATE INC

\$380,000
MLS 7100719 Residential
22421 380th Street
Laporte MN 56461



FLOOR PLAN CREATED BY CUBICASA APP. MEASUREMENTS DEEMED HIGHLY RELIABLE BUT NOT GUARANTEED.



FLOOR PLAN CREATED BY CUBICASA APP. MEASUREMENTS DEEMED HIGHLY RELIABLE BUT NOT GUARANTEED.

website: www.AffinityRealEstate.com | email: info@affinityrealestate.com | office: 218-237-3333 | fax: 218-237-3377



\$380,000
 MLS 7100719 Residential
 22421 380th Street
 Laporte MN 56461