



MLS 7100832 Residential

\$325,600

1,456 sq ft
3 bedrooms
2 baths

2247 Kalli Lane
Pine River MN 56474

Status: Active

Description:

Welcome home to this immaculate 3-bedroom, 2-bathroom property, perfectly situated on a beautifully manicured 1.54 acre lot offering the ideal blend of peaceful country living and convenient access to town amenities. Step inside to find warm hardwood floors flowing through the kitchen and dining area, creating an inviting space for everyday living and entertaining. The thoughtfully designed layout is move-in ready while offering room to grow. The unfinished lower level presents exceptional potential with egress windows already in place, making it ideal for adding up to two additional bedrooms and a third bathroom. A spacious pantry provides ample storage, while the expansive basement offers endless possibilities for a family room, recreation area, home gym or hobby space. Outside, you'll appreciate the oversized double garage, blacktop driveway and meticulously maintained grounds that provide plenty of room to enjoy the outdoors. Relax on the back deck with its desirable southern exposure-the perfect spot to savor your morning coffee or unwind with evening cocktails while taking in the peaceful surroundings. Offering space, quality and incredible future potential, this exceptional property combines the tranquility of acreage living with convenience of being just minutes from shopping, dining, schools and other local amenities. Don't miss the opportunity to make this beautiful home your own!

Additional Details:

Year Built	2005
Lot Acres	1.54
Lot Dimensions	239x282x239x282
Garage Stalls	2
School District	2174
Taxes	\$968
Taxes with Assessments	\$1,054
Tax Year	2026

Additional Features:

Basement: Block, Egress Window(s), Unfinished **Fuel:** Natural Gas **Garage:** 2 **Heat:** Forced Air **Sewer:** Septic System Compliant - Yes, Tank with Drainage Field **Water:** Drilled **Air Conditioning:** None

Driving Directions:

From Pine River take 84 N. to White Pine Point RD SW, turn on Kalli Lane #224



Listed By:
Heartland Real Estate

Affinity Real Estate Inc. participates in the Regional Multiple Listing Service of Minnesota, Inc Broker Reciprocity (sm) program, allowing us to display other broker's listings on our website. All properties are subject to prior sale, change or withdrawal.



Call Affinity Real Estate

218-237-3333

info@affinityrealestate.com



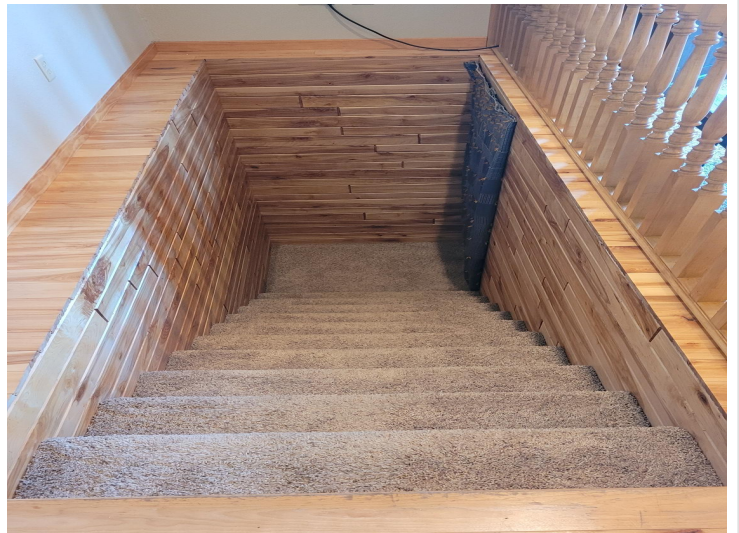
Affinity Real Estate - 600 Park Avenue South - Park Rapids MN 56470



website: www.AffinityRealEstate.com | email: info@affinityrealestate.com | office: 218-237-3333 | fax:218-237-3377

Affinity
REAL ESTATE INC

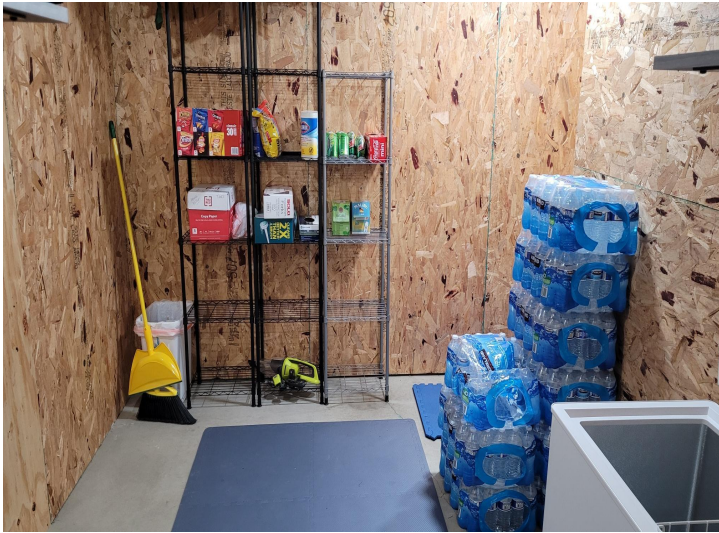
\$325,600
MLS 7100832 Residential
2247 Kalli Lane
Pine River MN 56474



website: www.AffinityRealEstate.com | email: info@affinityrealestate.com | office: 218-237-3333 | fax:218-237-3377

Affinity
REAL ESTATE INC

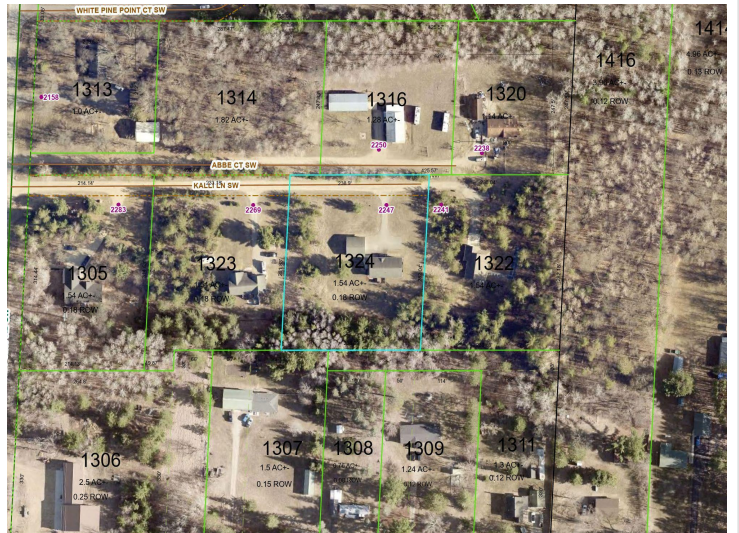
\$325,600
MLS 7100832 Residential
2247 Kalli Lane
Pine River MN 56474



website: www.AffinityRealEstate.com | email: info@affinityrealestate.com | office: 218-237-3333 | fax:218-237-3377

Affinity
REAL ESTATE INC

\$325,600
MLS 7100832 Residential
2247 Kalli Lane
Pine River MN 56474



website: www.AffinityRealEstate.com | email: info@affinityrealestate.com | office: 218-237-3333 | fax:218-237-3377



\$325,600
MLS 7100832 Residential
2247 Kalli Lane
Pine River MN 56474

website: www.AffinityRealEstate.com | email: info@affinityrealestate.com | office: 218-237-3333 | fax:218-237-3377



\$325,600
MLS 7100832 Residential
2247 Kalli Lane
Pine River MN 56474