



MLS 7100925 Residential

\$574,900

3,392 sq ft
4 bedrooms
3 baths

8553 Waseya Woods Drive
Nisswa MN 56468

Status: Coming Soon

Description:

Don't miss this 4+ bedroom, three-bath executive home located in the prestigious Waseya Woods Development. Home features an open floor plan, vaulted ceilings, Cedar siding, stainless steel appliances, main-floor laundry, a large main-floor primary bedroom with a private bath and walk-in closet, a fully finished walkout basement, a wet bar, an office, hardwood floors, a large maintenance-free deck overlooking the private backyard, patio, professionally landscaped yard, and an attached three-car drive-thru garage. Home is located close to Gull Lake public access, shopping, and restaurants. Set up a showing today.

Additional Details:

Year Built	2002
Lot Acres	1.948
Lot Dimensions	296x513x345
Garage Stalls	3
School District	181
Taxes	\$3,208
Taxes with Assessments	\$3,294
Tax Year	2026

Additional Features:

Fuel: Natural Gas **Heat:** Forced Air

Driving Directions:

From MN-371 N: Turn left onto Co Rd 77 in Nisswa, at the roundabout take the second exit to stay on Co Rd 77. Turn left onto left onto Fernmont Rd, turn right onto Waseya Woods Dr, home will be on the left.



Listed By:
eXp Realty

Affinity Real Estate Inc. participates in the Regional Multiple Listing Service of Minnesota, Inc Broker Reciprocity (sm) program, allowing us to display other broker's listings on our website. All properties are subject to prior sale, change or withdrawal.



Call Affinity Real Estate

218-237-3333

info@affinityrealestate.com



Affinity Real Estate - 600 Park Avenue South - Park Rapids MN 56470



website: www.AffinityRealEstate.com | email: info@affinityrealestate.com | office: 218-237-3333 | fax:218-237-3377



\$574,900
MLS 7100925 Residential
8553 Waseya Woods Drive
Nisswa MN 56468



website: www.AffinityRealEstate.com | email: info@affinityrealestate.com | office: 218-237-3333 | fax:218-237-3377

Affinity
REAL ESTATE INC

\$574,900
MLS 7100925 Residential
8553 Waseya Woods Drive
Nisswa MN 56468



website: www.AffinityRealEstate.com | email: info@affinityrealestate.com | office: 218-237-3333 | fax:218-237-3377

Affinity
REAL ESTATE INC

\$574,900
MLS 7100925 Residential
8553 Waseya Woods Drive
Nisswa MN 56468



website: www.AffinityRealEstate.com | email: info@affinityrealestate.com | office: 218-237-3333 | fax:218-237-3377

Affinity
REAL ESTATE INC

\$574,900
MLS 7100925 Residential
8553 Waseya Woods Drive
Nisswa MN 56468



website: www.AffinityRealEstate.com | email: info@affinityrealestate.com | office: 218-237-3333 | fax:218-237-3377



\$574,900
MLS 7100925 Residential
8553 Waseya Woods Drive
Nisswa MN 56468



website: www.AffinityRealEstate.com | email: info@affinityrealestate.com | office: 218-237-3333 | fax:218-237-3377



\$574,900
MLS 7100925 Residential
8553 Waseya Woods Drive
Nisswa MN 56468



website: www.AffinityRealEstate.com | email: info@affinityrealestate.com | office: 218-237-3333 | fax:218-237-3377

Affinity
REAL ESTATE INC

\$574,900
MLS 7100925 Residential
8553 Waseya Woods Drive
Nisswa MN 56468



website: www.AffinityRealEstate.com | email: info@affinityrealestate.com | office: 218-237-3333 | fax:218-237-3377

Affinity
REAL ESTATE INC

\$574,900
MLS 7100925 Residential
8553 Waseya Woods Drive
Nisswa MN 56468



website: www.AffinityRealEstate.com | email: info@affinityrealestate.com | office: 218-237-3333 | fax:218-237-3377

Affinity
REAL ESTATE INC

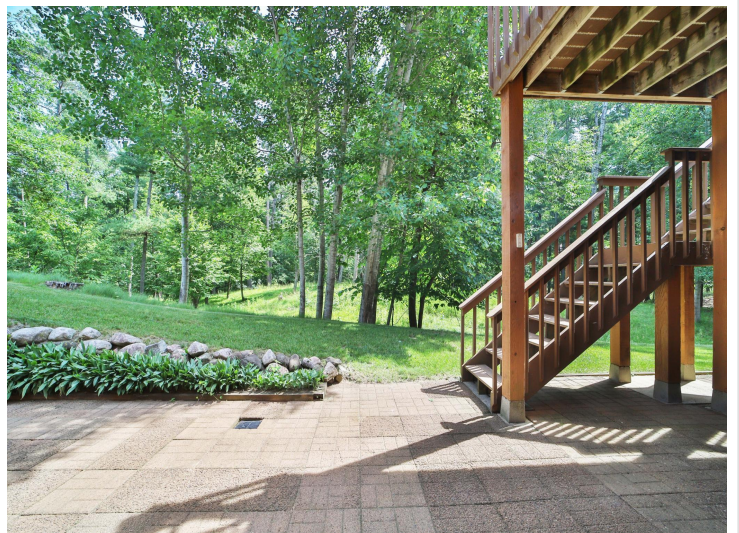
\$574,900
MLS 7100925 Residential
8553 Waseya Woods Drive
Nisswa MN 56468



website: www.AffinityRealEstate.com | email: info@affinityrealestate.com | office: 218-237-3333 | fax:218-237-3377



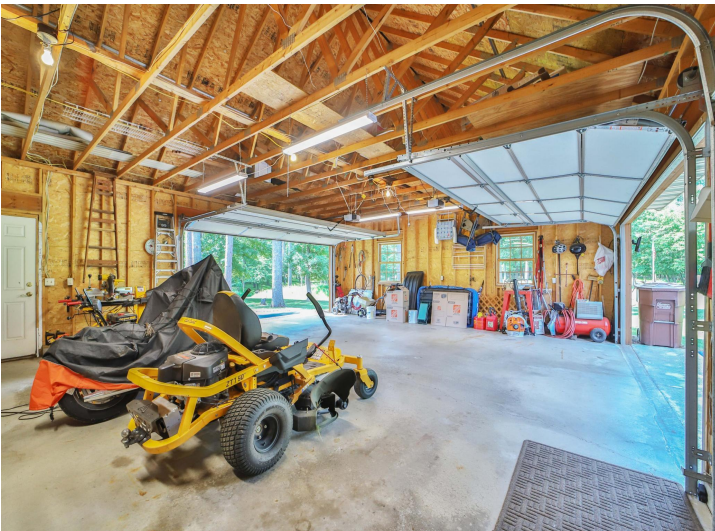
\$574,900
MLS 7100925 Residential
8553 Waseya Woods Drive
Nisswa MN 56468



website: www.AffinityRealEstate.com | email: info@affinityrealestate.com | office: 218-237-3333 | fax:218-237-3377



\$574,900
MLS 7100925 Residential
8553 Waseya Woods Drive
Nisswa MN 56468



website: www.AffinityRealEstate.com | email: info@affinityrealestate.com | office: 218-237-3333 | fax:218-237-3377

Affinity
REAL ESTATE INC

\$574,900
MLS 7100925 Residential
8553 Waseya Woods Drive
Nisswa MN 56468



website: www.AffinityRealEstate.com | email: info@affinityrealestate.com | office: 218-237-3333 | fax:218-237-3377

Affinity
REAL ESTATE INC

\$574,900
MLS 7100925 Residential
8553 Waseya Woods Drive
Nisswa MN 56468



website: www.AffinityRealEstate.com | email: info@affinityrealestate.com | office: 218-237-3333 | fax:218-237-3377



\$574,900
MLS 7100925 Residential
8553 Waseya Woods Drive
Nisswa MN 56468