



MLS 7101084 Lake Home

\$464,900

1,004 sq ft
2 bedrooms
2 baths

20612 County Highway 22
Detroit Lakes MN 56501

Waterfront: Maud

Status: Active

Description:

Lake living at its finest! Enjoy stunning westerly views, breathtaking sunsets, and a beautiful sandy beach from this charming 2-bedroom, 2-bath cabin with a bright sunroom. Designed for easy, low-maintenance lake living, it's the perfect retreat for those who want to relax and make the most of every season. Spend your days on the spacious deck overlooking the water or unwind as the sun sets over the lake. Underground sprinklers keep the lawn lush and green with minimal effort. Conveniently located just minutes from restaurants, golf courses, and all the shopping and entertainment that Detroit Lakes has to offer. The home is being sold furnished, with only a few personal items excluded, making it move-in ready for you to start enjoying the lake lifestyle immediately.

Additional Details:

Year Built	1974
Lot Acres	0.13
Lot Dimensions	75 x 65
School District	2889
Taxes	\$1,598
Taxes with Assessments	\$1,712
Tax Year	2025

Additional Features:

Basement: Crawl Space **Fuel:** Electric **Heat:** Forced Air **Sewer:** Holding Tank **Water:** 4-Inch Submersible **Air Conditioning:** Central Air

Driving Directions:

From DL, cty 6 to cty 15, go south to cty 22. go west until you get to property on right.



Listed By:
Archer Real Estate Services

Affinity Real Estate Inc. participates in the Regional Multiple Listing Service of Minnesota, Inc Broker Reciprocity (sm) program, allowing us to display other broker's listings on our website. All properties are subject to prior sale, change or withdrawal.



Call Affinity Real Estate

218-237-3333

info@affinityrealestate.com



Affinity Real Estate - 600 Park Avenue South - Park Rapids MN 56470



website: www.AffinityRealEstate.com | email: info@affinityrealestate.com | office: 218-237-3333 | fax:218-237-3377

Affinity
REAL ESTATE INC

\$464,900
MLS 7101084 Lake Home
20612 County Highway 22
Detroit Lakes MN 56501



website: www.AffinityRealEstate.com | email: info@affinityrealestate.com | office: 218-237-3333 | fax:218-237-3377

Affinity
REAL ESTATE INC

\$464,900
MLS 7101084 Lake Home
20612 County Highway 22
Detroit Lakes MN 56501



website: www.AffinityRealEstate.com | email: info@affinityrealestate.com | office: 218-237-3333 | fax:218-237-3377

Affinity
REAL ESTATE INC

\$464,900
MLS 7101084 Lake Home
20612 County Highway 22
Detroit Lakes MN 56501



website: www.AffinityRealEstate.com | email: info@affinityrealestate.com | office: 218-237-3333 | fax: 218-237-3377

Affinity
REAL ESTATE INC

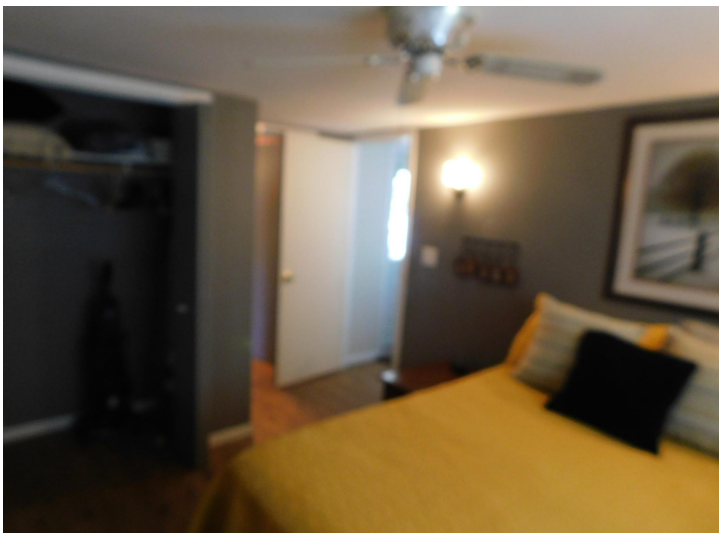
\$464,900
MLS 7101084 Lake Home
20612 County Highway 22
Detroit Lakes MN 56501



website: www.AffinityRealEstate.com | email: info@affinityrealestate.com | office: 218-237-3333 | fax:218-237-3377

Affinity
REAL ESTATE INC

\$464,900
MLS 7101084 Lake Home
20612 County Highway 22
Detroit Lakes MN 56501



website: www.AffinityRealEstate.com | email: info@affinityrealestate.com | office: 218-237-3333 | fax:218-237-3377



\$464,900
MLS 7101084 Lake Home
20612 County Highway 22
Detroit Lakes MN 56501