

MLS 7101091 Land

**\$20,000**

0.24 Acres  
Finished Lot(s)

TBD Lot 7 Gust Avenue  
Park Rapids MN 56470

Status: Active

**Description:**

Welcome to Heartland Heights! A crisp new development on the edge of Park Rapids, new streets, and infrastructure is being completed and will be ready for you to build your new home! A number of lots are available. Be part of the newest neighborhood in town, with its own 3-acre city park, and a short drive to everything Park Rapids has to offer. Assessments are forgiven as long as construction commence within a year of purchase and completion milestones are met. Restrictive covenants and assessment forgiveness information available upon request, Talk to your lender about FHA, VA, and conventional construction loan options available to you. A new home may be more attainable than you thought. Site is under construction with limited public access. Please call agent for details.

**Additional Details:**

Lot Acres	0.24
Lot Dimensions	128x80
School District	309
Taxes	(unreported)
Taxes with Assessments	(unreported)
Tax Year	2026

**Additional Features:**

**Driving Directions:**

From Park Rapids 34/71 in Park Rapids, head East to a left Career Path Drive. Follow North to a left on Finley Street, streets are currently under construction.



Listed By:  
Coldwell Banker Crown Realtors

Affinity Real Estate Inc. participates in the Regional Multiple Listing Service of Minnesota, Inc Broker Reciprocity (sm) program, allowing us to display other broker's listings on our website. All properties are subject to prior sale, change or withdrawal.



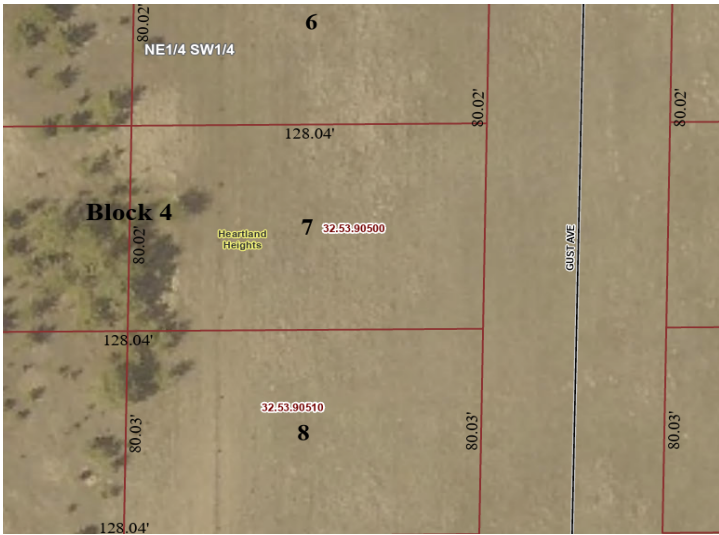
Call Affinity Real Estate

**218-237-3333**

[info@affinityrealestate.com](mailto:info@affinityrealestate.com)



Affinity Real Estate - 600 Park Avenue South - Park Rapids MN 56470



website: [www.AffinityRealEstate.com](http://www.AffinityRealEstate.com) | email: [info@affinityrealestate.com](mailto:info@affinityrealestate.com) | office: 218-237-3333 | fax: 218-237-3377



**\$20,000**  
 MLS 7101091 Land  
 TBD Lot 7 Gust Avenue  
 Park Rapids MN 56470