



MLS 7101119 Lake Land

\$130,000

Description:

Conveniently located between Garrison, Deerwood and Brainerd, Echo Ridge is a new, small development on the north side of Partridge Lake. 5 lots are available from .91 acres to 3.87 acres with 150 to 170 feet of shoreline, some with hard sand at the shore. A new road and electric are in, and there are no covenants or restrictions so you can camp, build a home or cabin, or a pole building for your storage needs. Partridge Lake has nice water clarity with a maximum depth of 42', and it connects to Turtle Lake. Fish for Bass, Northern and Panfish. Several other nice lakes and many dining options in the area, and of course, the Cuyuna Bike trails are not too far away. Start planning your escape to Partridge Lake!

Additional Details:

Lot Acres	0.91
Lot Dimensions	152 x 260 x 73 x 53 x 258
School District	182
Taxes	\$210
Taxes with Assessments	\$210
Tax Year	2026

Additional Features:

Driving Directions:

From the junction of Hwy 6 & Tame Fish Lake Road (Ruttgers), go east on Tame Fish Lake Road about 2 miles to Right on Cnty Rd 10. Go 5 miles to left on Echo Ridge.

From Garrison, go about 4 miles west on Hwy 18 to R on Cnty Rd 10. Go 1 mile to Echo Ridge on the right.



Listed By:
Edina Realty, Inc.

Affinity Real Estate Inc. participates in the Regional Multiple Listing Service of Minnesota, Inc Broker Reciprocity (sm) program, allowing us to display other broker's listings on our website. All properties are subject to prior sale, change or withdrawal.



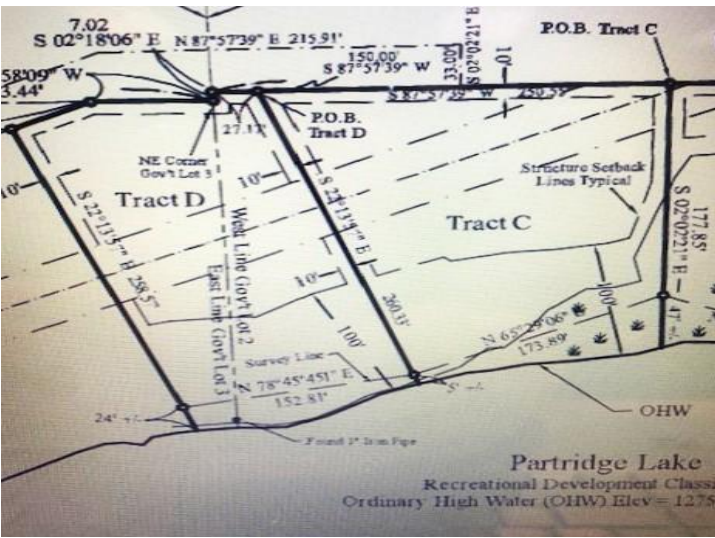
Call Affinity Real Estate

218-237-3333

info@affinityrealestate.com



Affinity Real Estate - 600 Park Avenue South - Park Rapids MN 56470



50260579



website: www.AffinityRealEstate.com | email: info@affinityrealestate.com | office: 218-237-3333 | fax: 218-237-3377

Affinity
REAL ESTATE INC

\$130,000
MLS 7101119 Lake Land
Lot D Echo Ridge
Deerwood MN 56444



website: www.AffinityRealEstate.com | email: info@affinityrealestate.com | office: 218-237-3333 | fax:218-237-3377



\$130,000
MLS 7101119 Lake Land
Lot D Echo Ridge
Deerwood MN 56444