



MLS 7101178 Land

\$24,900

0.71 Acres
Raw Land

TBD Franklin Avenue
Park Rapids MN 56470

Status: Active

Description:

Park Rapids City building lot. This property offers a variety of mature trees, offering you a private feel while being close to Park Rapids amenities. Take a short walk to Heartland Park where you can access the Heartland Trail, swimming beach, boat launch, pickle ball courts and more. Great building opportunity awaits.

Additional Details:

Lot Acres	0.71
Lot Dimensions	113x279x110x279
School District	309
Taxes	\$284
Taxes with Assessments	\$284
Tax Year	2026

Additional Features:

Driving Directions:

From 34/71 in Park Rapids, East on 34 to a left on Bridge St. to a right on Franklin Ave to property.



Listed By:
Wolff & Simon Real Estate

Affinity Real Estate Inc. participates in the Regional Multiple Listing Service of Minnesota, Inc Broker Reciprocity (sm) program, allowing us to display other broker's listings on our website. All properties are subject to prior sale, change or withdrawal.



Call Affinity Real Estate

218-237-3333

info@affinityrealestate.com



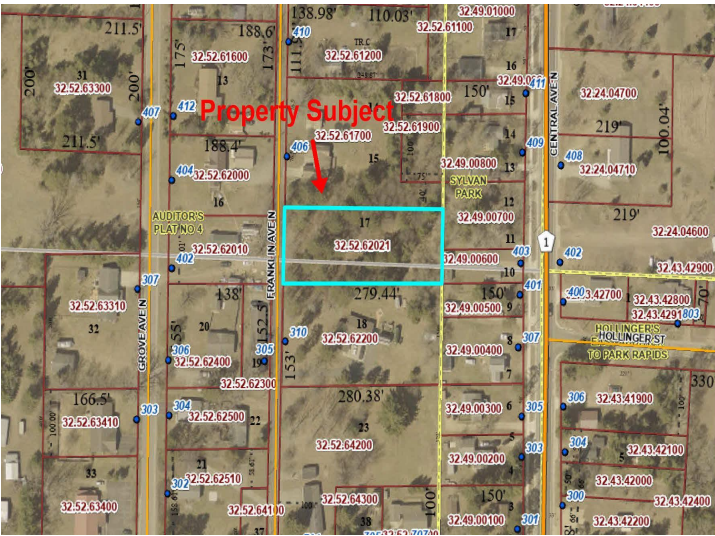
Affinity Real Estate - 600 Park Avenue South - Park Rapids MN 56470



website: www.AffinityRealEstate.com | email: info@affinityrealestate.com | office: 218-237-3333 | fax:218-237-3377



\$24,900
MLS 7101178 Land
TBD Franklin Avenue
Park Rapids MN 56470



website: www.AffinityRealEstate.com | email: info@affinityrealestate.com | office: 218-237-3333 | fax: 218-237-3377



\$24,900
 MLS 7101178 Land
 TBD Franklin Avenue
 Park Rapids MN 56470