



MLS 7101249 Land

**\$154,900**

1.6 Acres  
Other

TBD Smith Lake Road  
Osakis MN 56360

Status: Active

**Description:**

Here's your opportunity for that rural retreat you've been craving! This beautiful 1.6-acre property is home to a variety of wildlife, including deer & a plethora of songbirds. The massive 48' x 30' garage features a 12'w x 12'4"h overhead door with a commercial opener & 48 feet of white translucent eave lite on the south side for natural light. It's large enough for an RV with plenty of additional space for boats, other vehicles or equipment, & all your lake toys. Built on a cement slab & hooked up to electricity, this versatile space is ready for your imagination. Conveniently located just off I-94 between Osakis & Alexandria, you'll enjoy easy access to town amenities while still enjoying the peace and privacy of the countryside. With the Smith Lake boat landing less than a mile away, plus countless other area lakes nearby, you'll have endless opportunities for outdoor recreation and fun!

**Additional Details:**

|                        |                       |
|------------------------|-----------------------|
| Lot Acres              | 1.6                   |
| Lot Dimensions         | 150 x 521 x 184 x 412 |
| School District        | 206                   |
| Taxes                  | \$538                 |
| Taxes with Assessments | \$538                 |
| Tax Year               | 2026                  |

**Additional Features:**

**Driving Directions:**

From Alexandria, East on County 82, Rt on Smith Lake Rd. Follow Smith Lake Rd 1.4 mi. Driveway is on the L, garage is the one on the R. From Osakis, west on County 82, L on Smith Lake Rd, 1.4 mi. Driveway is on the L, garage is the one on the Rt.



Listed By:  
ALO Realty Advisors

Affinity Real Estate Inc. participates in the Regional Multiple Listing Service of Minnesota, Inc Broker Reciprocity (sm) program, allowing us to display other broker's listings on our website. All properties are subject to prior sale, change or withdrawal.



**Call Affinity Real Estate**

**218-237-3333**

**info@affinityrealestate.com**



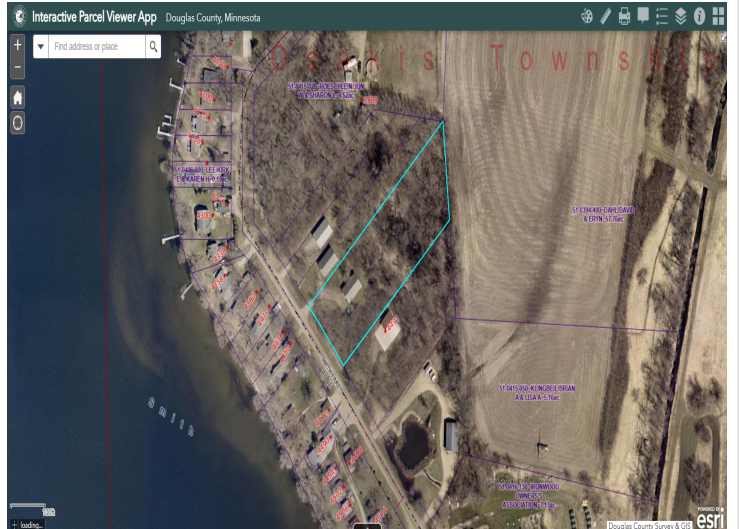
**Affinity Real Estate - 600 Park Avenue South - Park Rapids MN 56470**



website: [www.AffinityRealEstate.com](http://www.AffinityRealEstate.com) | email: [info@affinityrealestate.com](mailto:info@affinityrealestate.com) | office: 218-237-3333 | fax:218-237-3377



**\$154,900**  
MLS 7101249 Land  
TBD Smith Lake Road  
Osakis MN 56360



website: [www.AffinityRealEstate.com](http://www.AffinityRealEstate.com) | email: [info@affinityrealestate.com](mailto:info@affinityrealestate.com) | office: 218-237-3333 | fax:218-237-3377



**\$154,900**  
MLS 7101249 Land  
TBD Smith Lake Road  
Osakis MN 56360