



MLS 7101251 Lake Home

\$329,900

1,648 sq ft
3 bedrooms
2 baths

39331 State Highway 6
Emily MN 56447

Waterfront: Dahler

Status: Active

Description:

Enjoy year-round lake living on Dahler Lake with this 3 bedroom, 2 bath one-level home set on 2.93 wooded acres in a private setting with approximately 263 feet of level lakeshore. The home offers 1,648 finished square feet, an open kitchen/dining layout, spacious living area with gas fireplace, main floor laundry, primary suite, central air, deck, dock, and a 32x32 detached garage. The full 8' unfinished basement provides excellent storage. Lake views, level shoreline, and a peaceful location just south of Emily make this a great opportunity for full-time living, weekend use, or a northern Minnesota retreat.

Additional Details:

Year Built	2001
Lot Acres	2.93
Lot Dimensions	2.93 acres
Garage Stalls	2
School District	182
Taxes	\$2,114
Taxes with Assessments	\$2,114
Tax Year	2026

Additional Features:

Basement: Block, Unfinished **Fuel:** Propane **Garage:** 2 **Heat:** Forced Air **Sewer:** Tank with Drainage Field **Water:** 4-Inch Submersible **Air Conditioning:** Central Air

Driving Directions:

From Emily, south on Hwy 6 .8 miles to fire#39331 on West side of road



Listed By:
Gallery of Homes

Affinity Real Estate Inc. participates in the Regional Multiple Listing Service of Minnesota, Inc Broker Reciprocity (sm) program, allowing us to display other broker's listings on our website. All properties are subject to prior sale, change or withdrawal.



Call Affinity Real Estate

218-237-3333

info@affinityrealestate.com



Affinity Real Estate - 600 Park Avenue South - Park Rapids MN 56470



website: www.AffinityRealEstate.com | email: info@affinityrealestate.com | office: 218-237-3333 | fax:218-237-3377

Affinity
REAL ESTATE INC

\$329,900
MLS 7101251 Lake Home
39331 State Highway 6
Emily MN 56447



website: www.AffinityRealEstate.com | email: info@affinityrealestate.com | office: 218-237-3333 | fax:218-237-3377



\$329,900
MLS 7101251 Lake Home
39331 State Highway 6
Emily MN 56447



website: www.AffinityRealEstate.com | email: info@affinityrealestate.com | office: 218-237-3333 | fax: 218-237-3377



\$329,900
MLS 7101251 Lake Home
39331 State Highway 6
Emily MN 56447



website: www.AffinityRealEstate.com | email: info@affinityrealestate.com | office: 218-237-3333 | fax: 218-237-3377

Affinity
REAL ESTATE INC

\$329,900
MLS 7101251 Lake Home
39331 State Highway 6
Emily MN 56447



website: www.AffinityRealEstate.com | email: info@affinityrealestate.com | office: 218-237-3333 | fax:218-237-3377

Affinity
REAL ESTATE INC

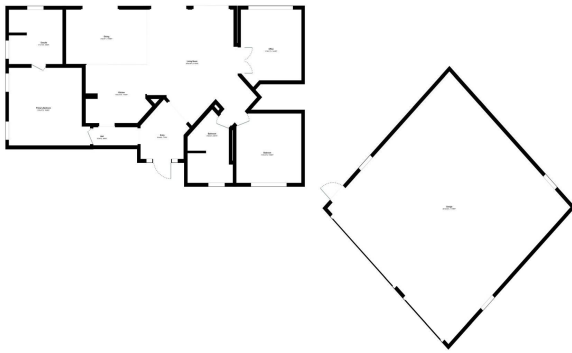
\$329,900
MLS 7101251 Lake Home
39331 State Highway 6
Emily MN 56447



website: www.AffinityRealEstate.com | email: info@affinityrealestate.com | office: 218-237-3333 | fax:218-237-3377



\$329,900
MLS 7101251 Lake Home
39331 State Highway 6
Emily MN 56447



For illustration purposes only. Not to scale.

Emily, 39331 St 6

website: www.AffinityRealEstate.com | email: info@affinityrealestate.com | office: 218-237-3333 | fax:218-237-3377



\$329,900
MLS 7101251 Lake Home
39331 State Highway 6
Emily MN 56447