



MLS 7101303 Lake Home

\$359,900

1,240 sq ft
3 bedrooms
1 baths

2047 Clover Lane
Longville MN 56655

Waterfront: Long Lake

Status: Active

Description:

Beautifully maintained cabin on Long Lake with wonderful elevation to 75' of sandy beach shoreline. New siding, Andersen windows & deck steps in 2021. New water heater in 2024. So many possibilities here. Enough land to build out 15' and create a larger modern kitchen and expanded living/dining room space. Could update with radiant in-floor heat, mini-splits or HVAC given the full unfinished basement allows access. Finish the basement and add 2+ bedrooms and a bathroom. Add insulation and make it available year-round. Or just enjoy this cabin as is. This location provides the peace and quiet of up north living at a fabulous price.

Additional Details:

Year Built	1970
Lot Acres	12632
Lot Dimensions	16775 x 160 x 62
School District	118
Taxes	\$1,392
Taxes with Assessments	\$1,478
Tax Year	2026

Additional Features:

Fuel: Wood **Heat:** Wood Stove

Driving Directions:

From Longville, go North on CR 84 for 1.6 miles. Turn right on CR126 NE. In 2 miles, turn right onto Haskell Rd. In .5 miles, take slight right onto Clover Trail for .2 miles, turn right to stay on Clover Trail NE to property on left.



Listed By:
RE/MAX Results - Crosslake

Affinity Real Estate Inc. participates in the Regional Multiple Listing Service of Minnesota, Inc Broker Reciprocity (sm) program, allowing us to display other broker's listings on our website. All properties are subject to prior sale, change or withdrawal.



Call Affinity Real Estate

218-237-3333

info@affinityrealestate.com



Affinity Real Estate - 600 Park Avenue South - Park Rapids MN 56470



website: www.AffinityRealEstate.com | email: info@affinityrealestate.com | office: 218-237-3333 | fax:218-237-3377

Affinity
REAL ESTATE INC

\$359,900
MLS 7101303 Lake Home
2047 Clover Lane
Longville MN 56655



website: www.AffinityRealEstate.com | email: info@affinityrealestate.com | office: 218-237-3333 | fax:218-237-3377



\$359,900
MLS 7101303 Lake Home
2047 Clover Lane
Longville MN 56655



website: www.AffinityRealEstate.com | email: info@affinityrealestate.com | office: 218-237-3333 | fax: 218-237-3377

Affinity
REAL ESTATE INC

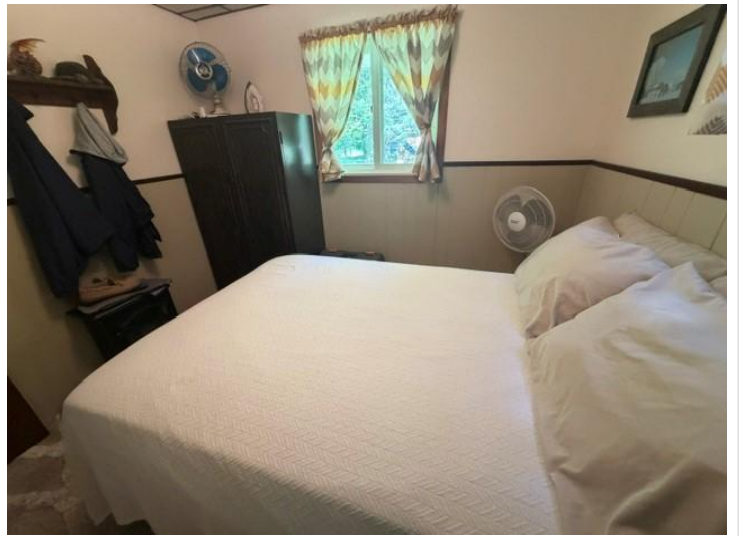
\$359,900
MLS 7101303 Lake Home
2047 Clover Lane
Longville MN 56655



website: www.AffinityRealEstate.com | email: info@affinityrealestate.com | office: 218-237-3333 | fax:218-237-3377

Affinity
REAL ESTATE INC

\$359,900
MLS 7101303 Lake Home
2047 Clover Lane
Longville MN 56655



website: www.AffinityRealEstate.com | email: info@affinityrealestate.com | office: 218-237-3333 | fax:218-237-3377

Affinity
REAL ESTATE INC

\$359,900
MLS 7101303 Lake Home
2047 Clover Lane
Longville MN 56655



website: www.AffinityRealEstate.com | email: info@affinityrealestate.com | office: 218-237-3333 | fax:218-237-3377

Affinity
REAL ESTATE INC

\$359,900
MLS 7101303 Lake Home
2047 Clover Lane
Longville MN 56655



website: www.AffinityRealEstate.com | email: info@affinityrealestate.com | office: 218-237-3333 | fax:218-237-3377

Affinity
REAL ESTATE INC

\$359,900
MLS 7101303 Lake Home
2047 Clover Lane
Longville MN 56655



website: www.AffinityRealEstate.com | email: info@affinityrealestate.com | office: 218-237-3333 | fax:218-237-3377



\$359,900
MLS 7101303 Lake Home
2047 Clover Lane
Longville MN 56655



website: www.AffinityRealEstate.com | email: info@affinityrealestate.com | office: 218-237-3333 | fax:218-237-3377



\$359,900
MLS 7101303 Lake Home
2047 Clover Lane
Longville MN 56655



website: www.AffinityRealEstate.com | email: info@affinityrealestate.com | office: 218-237-3333 | fax:218-237-3377



\$359,900
MLS 7101303 Lake Home
2047 Clover Lane
Longville MN 56655



website: www.AffinityRealEstate.com | email: info@affinityrealestate.com | office: 218-237-3333 | fax:218-237-3377



\$359,900
MLS 7101303 Lake Home
2047 Clover Lane
Longville MN 56655