



MLS 7101367 Residential

**\$250,000**

2,169 sq ft  
2 bedrooms  
2 baths

15876 Sandy Beach Road  
Mentor MN 56736

Status: Active

**Description:**

Enjoy a beautiful lake view of Maple Lake near Mentor, MN from this spacious, wooded lot. The home offers 2+ bedrooms, a double heated garage, storage shed, and is ready for renovation to bring it back to life. The setting is prime—quiet, scenic, and packed with potential. Priced well below tax value, this property is an excellent opportunity for buyers looking to invest in a great location.

**Additional Details:**

Year Built	1975
Lot Acres	1.413
Lot Dimensions	300x
Garage Stalls	2
School District	2609
Taxes	\$2,525
Taxes with Assessments	\$2,954
Tax Year	2026

**Additional Features:**

**Basement:** None **Fuel:** Electric **Garage:** 2 **Heat:** Baseboard, Forced Air **Sewer:** Private Sewer **Water:** Well **Air Conditioning:** None

**Driving Directions:**

In Mentor go south on County Rd 10 about 1 1/2 miles to Sandy Beach Road.



Listed By:  
Edina Realty, Inc.

Affinity Real Estate Inc. participates in the Regional Multiple Listing Service of Minnesota, Inc Broker Reciprocity (sm) program, allowing us to display other broker's listings on our website. All properties are subject to prior sale, change or withdrawal.



**Call Affinity Real Estate**

**218-237-3333**

**info@affinityrealestate.com**



**Affinity Real Estate - 600 Park Avenue South - Park Rapids MN 56470**



website: [www.AffinityRealEstate.com](http://www.AffinityRealEstate.com) | email: [info@affinityrealestate.com](mailto:info@affinityrealestate.com) | office: 218-237-3333 | fax:218-237-3377



**\$250,000**  
MLS 7101367 Residential  
15876 Sandy Beach Road  
Mentor MN 56736



website: [www.AffinityRealEstate.com](http://www.AffinityRealEstate.com) | email: [info@affinityrealestate.com](mailto:info@affinityrealestate.com) | office: 218-237-3333 | fax:218-237-3377

**Affinity**  
REAL ESTATE INC

**\$250,000**  
MLS 7101367 Residential  
15876 Sandy Beach Road  
Mentor MN 56736



website: [www.AffinityRealEstate.com](http://www.AffinityRealEstate.com) | email: [info@affinityrealestate.com](mailto:info@affinityrealestate.com) | office: 218-237-3333 | fax:218-237-3377



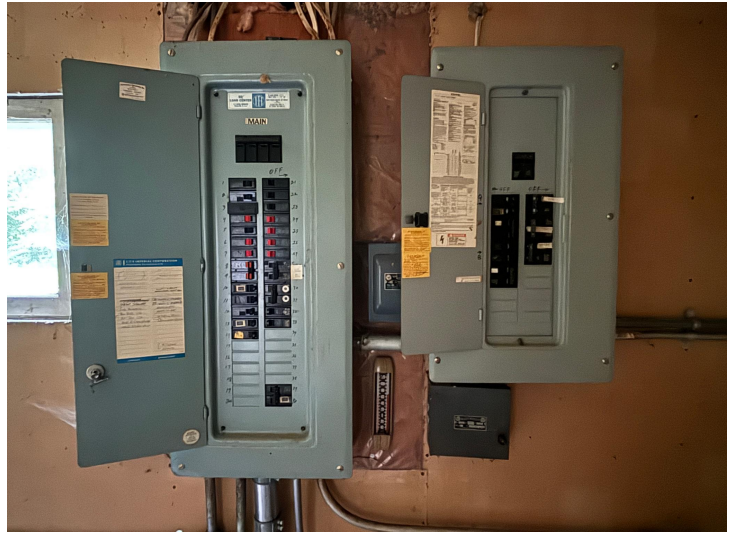
**\$250,000**  
MLS 7101367 Residential  
15876 Sandy Beach Road  
Mentor MN 56736



website: [www.AffinityRealEstate.com](http://www.AffinityRealEstate.com) | email: [info@affinityrealestate.com](mailto:info@affinityrealestate.com) | office: 218-237-3333 | fax:218-237-3377

**Affinity**  
REAL ESTATE INC

**\$250,000**  
MLS 7101367 Residential  
15876 Sandy Beach Road  
Mentor MN 56736



website: [www.AffinityRealEstate.com](http://www.AffinityRealEstate.com) | email: [info@affinityrealestate.com](mailto:info@affinityrealestate.com) | office: 218-237-3333 | fax: 218-237-3377



**\$250,000**  
 MLS 7101367 Residential  
 15876 Sandy Beach Road  
 Mentor MN 56736



website: [www.AffinityRealEstate.com](http://www.AffinityRealEstate.com) | email: [info@affinityrealestate.com](mailto:info@affinityrealestate.com) | office: 218-237-3333 | fax:218-237-3377



**\$250,000**  
MLS 7101367 Residential  
15876 Sandy Beach Road  
Mentor MN 56736