



MLS 7101695 Residential

\$379,900

2,389 sq ft
5 bedrooms
2 baths

14575 Inglewood Drive
Baxter MN 56425

Status: Coming Soon

Description:

Welcome home to this spacious 5 bedroom, 2 bath property offering over 2300 square feet in one of Baxter's most desirable locations. The home features a large entryway, beautiful 6 panel oak doors, central air, and a finished walkout lower level that provides additional living space. The attached 3 car garage offer plenty of room for vehicles, toys, and storage. Step outside to enjoy the deck overlooking a private backyard, perfect for relaxing or hosting family and friends. Conveniently located in the heart of Baxter, you appreciate being minutes from shopping, schools, parks, and everything Baxter has to offer. This home combines space, functionality, and an unbeatable location.

Additional Details:

Year Built	2005
Lot Acres	0.6
Lot Dimensions	100x261
Garage Stalls	3
School District	181
Taxes	\$3,334
Taxes with Assessments	\$3,334
Tax Year	2026

Additional Features:

Basement: Block, Daylight/Lookout Windows, Egress Window(s), Finished, Walkout **Fuel:** Natural Gas **Garage:** 3 **Heat:** Forced Air **Sewer:** City Sewer/Connected **Water:** City Water/Connected **Air Conditioning:** Central Air

Driving Directions:

From Hwy 371/210 corridor, take 210 W to a right on Inglewood to home on left

 Listed By:
Weichert REALTORS Tower Proper

Affinity Real Estate Inc. participates in the Regional Multiple Listing Service of Minnesota, Inc Broker Reciprocity (sm) program, allowing us to display other broker's listings on our website. All properties are subject to prior sale, change or withdrawal.



Call Affinity Real Estate
218-237-3333
info@affinityrealestate.com



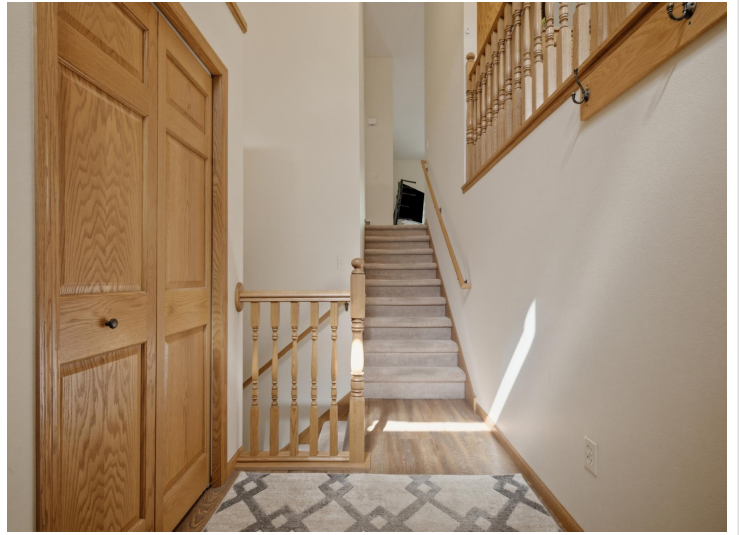
Affinity Real Estate - 600 Park Avenue South - Park Rapids MN 56470



website: www.AffinityRealEstate.com | email: info@affinityrealestate.com | office: 218-237-3333 | fax: 218-237-3377

Affinity
REAL ESTATE INC

\$379,900
MLS 7101695 Residential
14575 Inglewood Drive
Baxter MN 56425



website: www.AffinityRealEstate.com | email: info@affinityrealestate.com | office: 218-237-3333 | fax:218-237-3377

Affinity
REAL ESTATE INC

\$379,900
MLS 7101695 Residential
14575 Inglewood Drive
Baxter MN 56425



website: www.AffinityRealEstate.com | email: info@affinityrealestate.com | office: 218-237-3333 | fax: 218-237-3377

Affinity
REAL ESTATE INC

\$379,900
MLS 7101695 Residential
14575 Inglewood Drive
Baxter MN 56425



website: www.AffinityRealEstate.com | email: info@affinityrealestate.com | office: 218-237-3333 | fax:218-237-3377

Affinity
REAL ESTATE INC

\$379,900
MLS 7101695 Residential
14575 Inglewood Drive
Baxter MN 56425



website: www.AffinityRealEstate.com | email: info@affinityrealestate.com | office: 218-237-3333 | fax:218-237-3377



\$379,900
MLS 7101695 Residential
14575 Inglewood Drive
Baxter MN 56425