



MLS 7101725 Lake Home

**\$775,000**

3,006 sq ft  
5 bedrooms  
3 baths

14390 Shoreview Drive  
Baxter MN 56425

Waterfront: Whipple

Status: Active

**Description:**

Twenty feet from the water's edge, this five bed, three bath home on Whipple Lake has been completely remodeled and is ready to be somebody's favorite place on earth. The shoreline is level, the street is a dead end, and the location puts you right in the middle of everything Baxter has going on without feeling like it.

The updates inside are incredible, including a new kitchen + appliances, roof, furnace, new master bath, new flooring, new lighting, hardwood floors in the main level bedrooms. It doesn't feel rushed and the owners took their time pouring their heart into it. This is the spot memories are made, laughs are shared, and a good fire by the waters edge caps off a great evening.

The walkout lower level has its own kitchenette, which means you've got two full living spaces stacked on top of each other.

Level lot, great swimming, easy to get in and out of, this is just a really solid lake home that happens to sit closer to the water than anything you'll find on the market today.

North living doesn't get much better than this.

**Additional Details:**

Year Built	1977
Lot Acres	0.46
Lot Dimensions	84.35 x 202.81 x 87.46 x 184.42
Garage Stalls	2
School District	181
Taxes	\$4,894
Taxes with Assessments	\$4,894
Tax Year	2025

**Additional Features:**

**Basement:** Block, Egress Window(s), Finished, Full, Kitchenette, Tile Shower, Walkout **Fuel:** Natural Gas **Garage:** 2 **Heat:** Forced Air, Fireplace(s)  
**Sewer:** City Sewer/Connected **Water:** City Water/Connected **Air Conditioning:** Central Air

**Driving Directions:**

From cedar scenic. head nw



Listed By:  
Real Broker, LLC

Affinity Real Estate Inc. participates in the Regional Multiple Listing Service of Minnesota, Inc Broker Reciprocity (sm) program, allowing us to display other broker's listings on our website. All properties are subject to prior sale, change or withdrawal.



**Call Affinity Real Estate**

**218-237-3333**

**info@affinityrealestate.com**



**Affinity Real Estate - 600 Park Avenue South - Park Rapids MN 56470**



website: [www.AffinityRealEstate.com](http://www.AffinityRealEstate.com) | email: [info@affinityrealestate.com](mailto:info@affinityrealestate.com) | office: 218-237-3333 | fax: 218-237-3377

**Affinity**  
REAL ESTATE INC

**\$775,000**  
MLS 7101725 Lake Home  
14390 Shoreview Drive  
Baxter MN 56425



website: [www.AffinityRealEstate.com](http://www.AffinityRealEstate.com) | email: [info@affinityrealestate.com](mailto:info@affinityrealestate.com) | office: 218-237-3333 | fax: 218-237-3377

**Affinity**  
REAL ESTATE INC

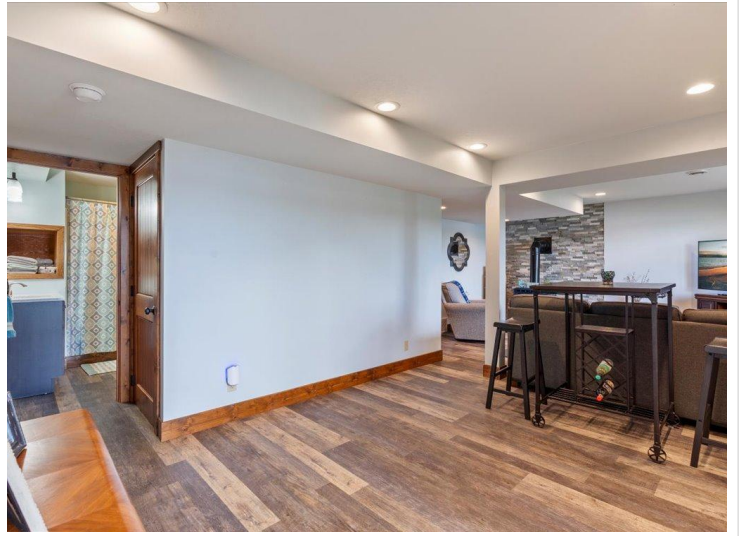
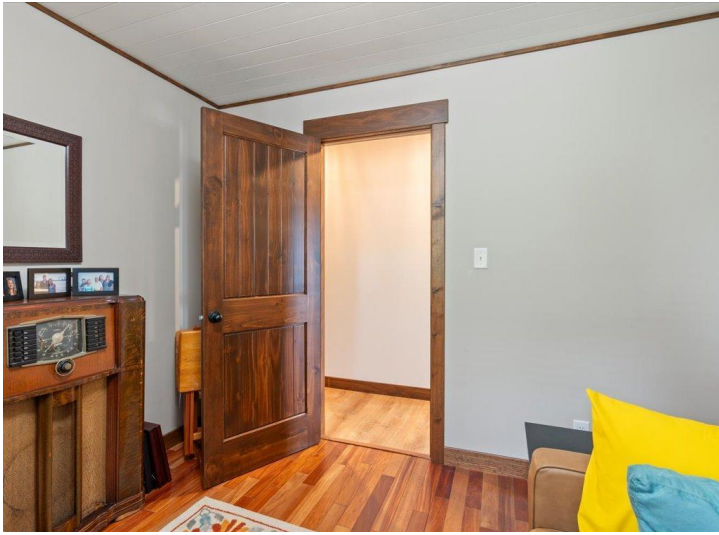
**\$775,000**  
MLS 7101725 Lake Home  
14390 Shoreview Drive  
Baxter MN 56425



website: [www.AffinityRealEstate.com](http://www.AffinityRealEstate.com) | email: [info@affinityrealestate.com](mailto:info@affinityrealestate.com) | office: 218-237-3333 | fax: 218-237-3377

**Affinity**  
REAL ESTATE INC

**\$775,000**  
MLS 7101725 Lake Home  
14390 Shoreview Drive  
Baxter MN 56425



website: [www.AffinityRealEstate.com](http://www.AffinityRealEstate.com) | email: [info@affinityrealestate.com](mailto:info@affinityrealestate.com) | office: 218-237-3333 | fax:218-237-3377

**Affinity**  
REAL ESTATE INC

**\$775,000**  
MLS 7101725 Lake Home  
14390 Shoreview Drive  
Baxter MN 56425



website: [www.AffinityRealEstate.com](http://www.AffinityRealEstate.com) | email: [info@affinityrealestate.com](mailto:info@affinityrealestate.com) | office: 218-237-3333 | fax:218-237-3377



**\$775,000**  
MLS 7101725 Lake Home  
14390 Shoreview Drive  
Baxter MN 56425



website: [www.AffinityRealEstate.com](http://www.AffinityRealEstate.com) | email: [info@affinityrealestate.com](mailto:info@affinityrealestate.com) | office: 218-237-3333 | fax:218-237-3377

**Affinity**  
REAL ESTATE INC

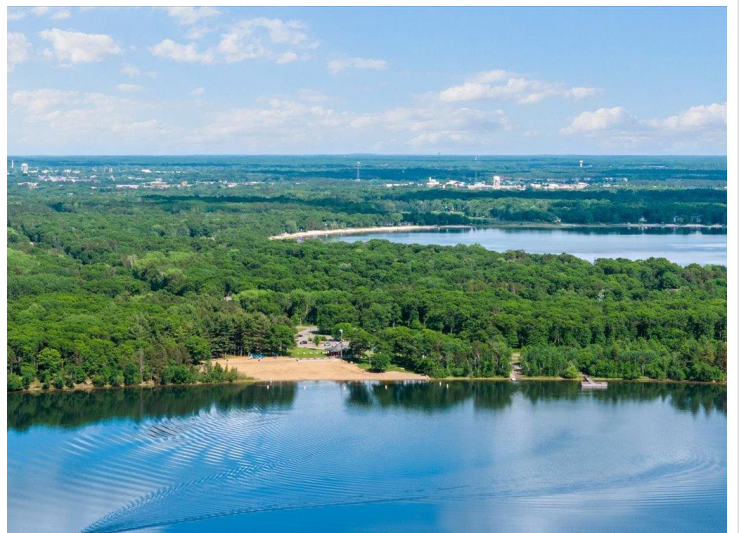
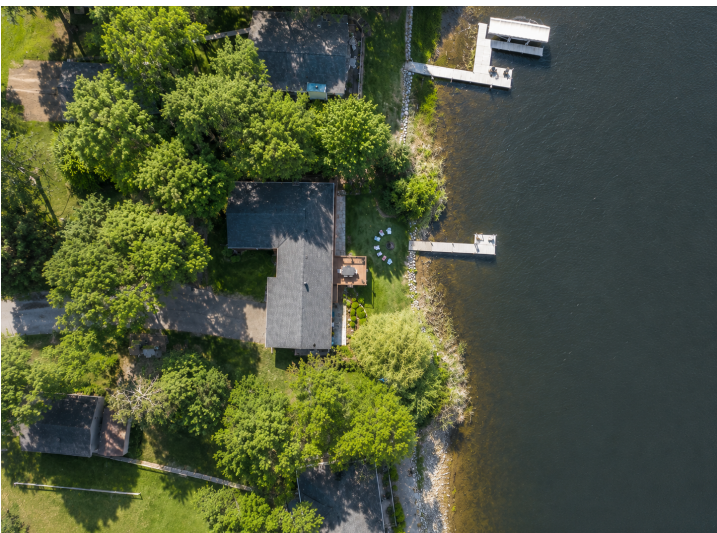
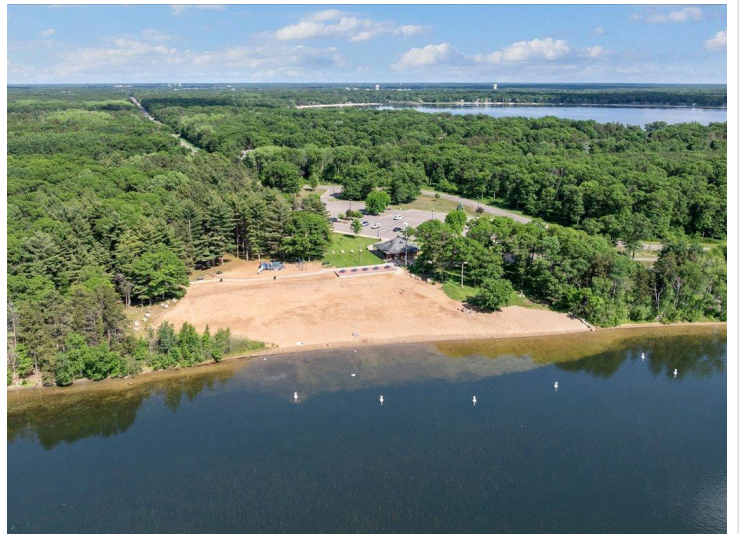
**\$775,000**  
MLS 7101725 Lake Home  
14390 Shoreview Drive  
Baxter MN 56425



website: [www.AffinityRealEstate.com](http://www.AffinityRealEstate.com) | email: [info@affinityrealestate.com](mailto:info@affinityrealestate.com) | office: 218-237-3333 | fax:218-237-3377



**\$775,000**  
MLS 7101725 Lake Home  
14390 Shoreview Drive  
Baxter MN 56425



website: [www.AffinityRealEstate.com](http://www.AffinityRealEstate.com) | email: [info@affinityrealestate.com](mailto:info@affinityrealestate.com) | office: 218-237-3333 | fax:218-237-3377

**Affinity**  
REAL ESTATE INC

**\$775,000**  
MLS 7101725 Lake Home  
14390 Shoreview Drive  
Baxter MN 56425



website: [www.AffinityRealEstate.com](http://www.AffinityRealEstate.com) | email: [info@affinityrealestate.com](mailto:info@affinityrealestate.com) | office: 218-237-3333 | fax:218-237-3377



**\$775,000**  
MLS 7101725 Lake Home  
14390 Shoreview Drive  
Baxter MN 56425