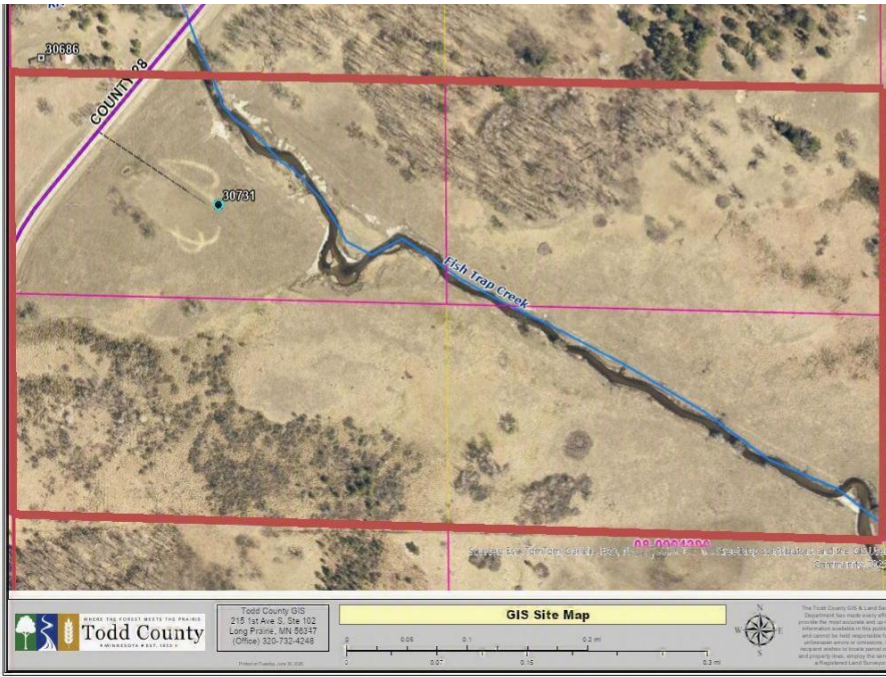




MLS 7101934 Lake Land

\$296,000



Description:

Pending before print.

Additional Details:

Lot Acres	80.87
Lot Dimensions	1290x2636x1314x2640
School District	2170
Taxes	\$1,196
Taxes with Assessments	\$1,196
Tax Year	2026

Additional Features:

Driving Directions:

From Motley, Hwy 10 south to west on County Rd 28 to the property on the left.



Listed By:
Realty Experts, LLC

Affinity Real Estate Inc. participates in the Regional Multiple Listing Service of Minnesota, Inc Broker Reciprocity (sm) program, allowing us to display other broker's listings on our website. All properties are subject to prior sale, change or withdrawal.



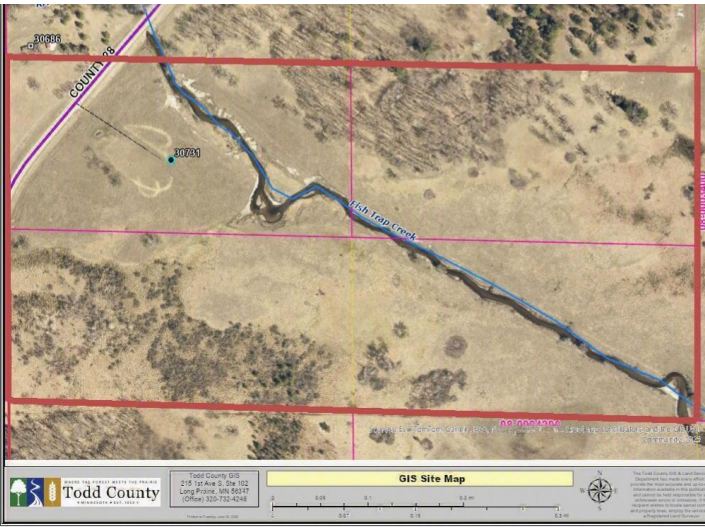
Call Affinity Real Estate

218-237-3333

info@affinityrealestate.com



Affinity Real Estate - 600 Park Avenue South - Park Rapids MN 56470



website: www.AffinityRealEstate.com | email: info@affinityrealestate.com | office: 218-237-3333 | fax:218-237-3377



\$296,000
MLS 7101934 Lake Land
30731 County Road 28
Browerville MN 56438