



MLS 7101942 Lake Home

**\$639,000**

1,648 sq ft  
3 bedrooms  
3 baths

41579 Ukkelberg Drive  
Clitherall MN 56524

Waterfront: West Battle

Status: Active

**Description:**

Welcome to one of the most desirable settings on beautiful West Battle Lake! With 150 feet of level shoreline, this property offers exceptional lake access, breathtaking west-facing views, and unforgettable sunsets right from your own yard.

The home features 3 bedrooms, 3 bathrooms, and a spacious layout ready for your vision. Whether you're looking to personalize a year-round residence, create the ultimate lake retreat, or invest in an outstanding piece of shoreline, the possibilities here are endless.

Properties with level frontage, incredible sunset views, and a premier West Battle Lake location are becoming increasingly difficult to find. Whether you choose to update the existing home or simply enjoy an unbeatable lakeside setting, this is an opportunity to make one of Otter Tail County's most sought-after lakes your own.

Bring your ideas and start making memories on West Battle Lake!

**Additional Details:**

Year Built	1986
Lot Acres	0.477
Lot Dimensions	150x150
Garage Stalls	2
School District	542
Taxes	\$4,994
Taxes with Assessments	\$4,994
Tax Year	2025

**Additional Features:**

**Fuel:** Electric, Propane **Heat:** Baseboard, Forced Air

**Driving Directions:**

Take 210 East to Clitherall, then head North on County Hwy 5. Turn left onto 415th Ave., turn Right on Ukkelberg Drive, continue to house number 41579.



Listed By:  
RE/MAX Advantage Plus

Affinity Real Estate Inc. participates in the Regional Multiple Listing Service of Minnesota, Inc Broker Reciprocity (sm) program, allowing us to display other broker's listings on our website. All properties are subject to prior sale, change or withdrawal.



**Call Affinity Real Estate**

**218-237-3333**

**info@affinityrealestate.com**



**Affinity Real Estate - 600 Park Avenue South - Park Rapids MN 56470**



website: [www.AffinityRealEstate.com](http://www.AffinityRealEstate.com) | email: [info@affinityrealestate.com](mailto:info@affinityrealestate.com) | office: 218-237-3333 | fax:218-237-3377



**\$639,000**  
MLS 7101942 Lake Home  
41579 Ukkelberg Drive  
Clitherall MN 56524



website: [www.AffinityRealEstate.com](http://www.AffinityRealEstate.com) | email: [info@affinityrealestate.com](mailto:info@affinityrealestate.com) | office: 218-237-3333 | fax: 218-237-3377

**Affinity**  
REAL ESTATE INC

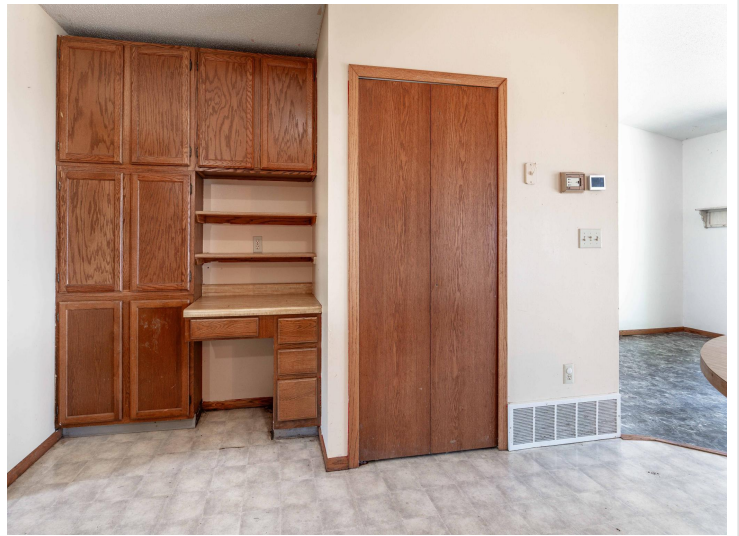
**\$639,000**  
MLS 7101942 Lake Home  
41579 Ukkelberg Drive  
Clitherall MN 56524



website: [www.AffinityRealEstate.com](http://www.AffinityRealEstate.com) | email: [info@affinityrealestate.com](mailto:info@affinityrealestate.com) | office: 218-237-3333 | fax:218-237-3377



**\$639,000**  
MLS 7101942 Lake Home  
41579 Ukkelberg Drive  
Clitherall MN 56524



website: [www.AffinityRealEstate.com](http://www.AffinityRealEstate.com) | email: [info@affinityrealestate.com](mailto:info@affinityrealestate.com) | office: 218-237-3333 | fax:218-237-3377

**Affinity**  
REAL ESTATE INC

**\$639,000**  
MLS 7101942 Lake Home  
41579 Ukkelberg Drive  
Clitherall MN 56524



website: [www.AffinityRealEstate.com](http://www.AffinityRealEstate.com) | email: [info@affinityrealestate.com](mailto:info@affinityrealestate.com) | office: 218-237-3333 | fax:218-237-3377

**Affinity**  
REAL ESTATE INC

**\$639,000**  
MLS 7101942 Lake Home  
41579 Ukkelberg Drive  
Clitherall MN 56524



website: [www.AffinityRealEstate.com](http://www.AffinityRealEstate.com) | email: [info@affinityrealestate.com](mailto:info@affinityrealestate.com) | office: 218-237-3333 | fax: 218-237-3377

**Affinity**  
REAL ESTATE INC

**\$639,000**  
MLS 7101942 Lake Home  
41579 Ukkelberg Drive  
Clitherall MN 56524



website: [www.AffinityRealEstate.com](http://www.AffinityRealEstate.com) | email: [info@affinityrealestate.com](mailto:info@affinityrealestate.com) | office: 218-237-3333 | fax:218-237-3377



**\$639,000**  
MLS 7101942 Lake Home  
41579 Ukkelberg Drive  
Clitherall MN 56524



website: [www.AffinityRealEstate.com](http://www.AffinityRealEstate.com) | email: [info@affinityrealestate.com](mailto:info@affinityrealestate.com) | office: 218-237-3333 | fax: 218-237-3377

**Affinity**  
REAL ESTATE INC

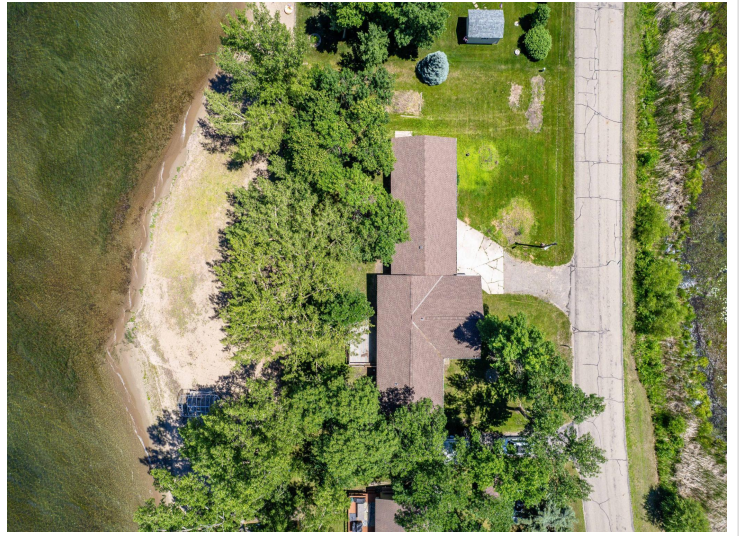
**\$639,000**  
MLS 7101942 Lake Home  
41579 Ukkelberg Drive  
Clitherall MN 56524



website: [www.AffinityRealEstate.com](http://www.AffinityRealEstate.com) | email: [info@affinityrealestate.com](mailto:info@affinityrealestate.com) | office: 218-237-3333 | fax: 218-237-3377

**Affinity**  
REAL ESTATE INC

**\$639,000**  
MLS 7101942 Lake Home  
41579 Ukkelberg Drive  
Clitherall MN 56524



website: [www.AffinityRealEstate.com](http://www.AffinityRealEstate.com) | email: [info@affinityrealestate.com](mailto:info@affinityrealestate.com) | office: 218-237-3333 | fax:218-237-3377



**\$639,000**  
MLS 7101942 Lake Home  
41579 Ukkelberg Drive  
Clitherall MN 56524