



MLS 7101962 Lake Home

\$899,900

1,937 sq ft
3 bedrooms
2 baths

1649 Gull Lane
Nisswa MN 56468

Waterfront: Gull

Status: Coming Soon

Description:

Exceptional custom-built executive home offering the perfect blend of luxury, comfort, and Northwoods living on 1.97 beautifully landscaped acres. Ideally located just a short walk from Quarterdeck Resort and only minutes to Nisswa, Gull Lake, championship golf, dining, shopping, and endless recreation, this meticulously maintained 3-bedroom, 2-bath residence was thoughtfully designed for effortless one-level living.

Quality craftsmanship is evident throughout, featuring a chef's kitchen with custom alder soft-close cabinetry, under cabinet lighting, granite countertops, stainless steel appliances, gas range, double oven, in-floor heat, and distinctive Chicago brick flooring. Warm tongue-and-groove accents, spacious living areas, and a stunning fireplace create an inviting atmosphere, while the oversized picture window fills the home with natural light. The private primary suite offers a walk-in closet and beautifully appointed 3/4 bath, and a dedicated office just off the foyer provides the perfect work-from-home space.

Step outside and enjoy the expansive south-facing deck, covered front porch, pergola, professionally landscaped grounds with irrigation, custom fenced garden beds with solar lighting, multiple fire pit areas, and a partially fenced backyard designed for relaxing and entertaining.

The oversized heated 3-car attached garage features durable epoxy floors, while the exterior showcases exceptional curb appeal with colorful perennials, low-voltage landscape lighting, a stamped concrete apron, and an asphalt driveway.

A true standout is the incredible 36x64 heated steel shop—perfect for hobbyists, entertaining, or storing all your toys. Complete with a half bath, sauna, fireplace, axe-throwing area, stainless steel refrigerator, utility sink, generous countertop workspace, upper-level loft with a maintenance-free deck and views of Gull Lake, and custom finishes throughout.

This one-of-a-kind property delivers luxury, recreation, and privacy in one of the Brainerd Lakes Area's most desirable locations. Don't miss your opportunity to own this exceptional retreat—be sure to watch the video tour and experience everything this remarkable property has to offer!

Additional Details:

	Listed By: 2016 Kurilla Realty, Inc. Real Estate LTD
<p>Multiple Listing Service of Minnesota, Inc Broker Reciprocity (sm) program, allowing us to display other broker's listings on our website. All properties are subject to prior sale, change or withdrawal.</p> <p>Garage Stalls: 3</p> <p>School District: 116</p>	
Taxes	\$3,766
Taxes with Assessments	\$3,852



Call Affinity Real Estate

218-237-3333

info@affinityrealestate.com



Affinity Real Estate - 600 Park Avenue South - Park Rapids MN 56470



website: www.AffinityRealEstate.com | email: info@affinityrealestate.com | office: 218-237-3333 | fax:218-237-3377



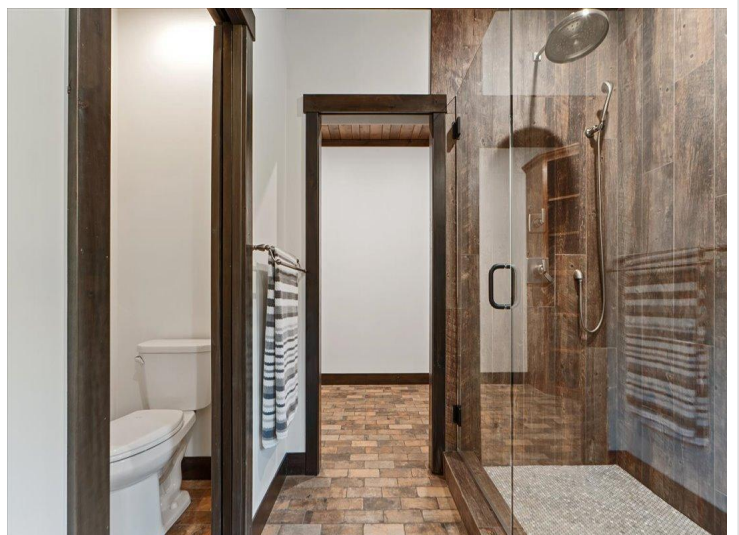
\$899,900
MLS 7101962 Lake Home
1649 Gull Lane
Nisswa MN 56468



website: www.AffinityRealEstate.com | email: info@affinityrealestate.com | office: 218-237-3333 | fax:218-237-3377



\$899,900
MLS 7101962 Lake Home
1649 Gull Lane
Nisswa MN 56468



website: www.AffinityRealEstate.com | email: info@affinityrealestate.com | office: 218-237-3333 | fax:218-237-3377



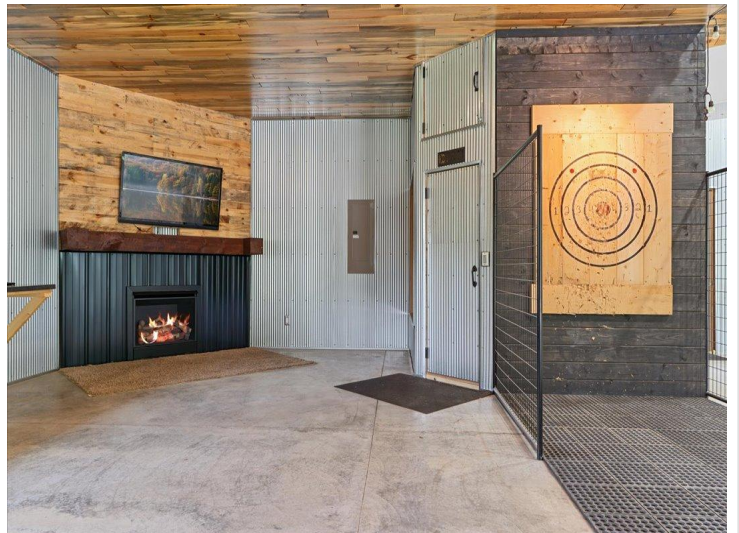
\$899,900
MLS 7101962 Lake Home
1649 Gull Lane
Nisswa MN 56468



website: www.AffinityRealEstate.com | email: info@affinityrealestate.com | office: 218-237-3333 | fax:218-237-3377

Affinity
REAL ESTATE INC

\$899,900
MLS 7101962 Lake Home
1649 Gull Lane
Nisswa MN 56468



website: www.AffinityRealEstate.com | email: info@affinityrealestate.com | office: 218-237-3333 | fax: 218-237-3377

Affinity
REAL ESTATE INC

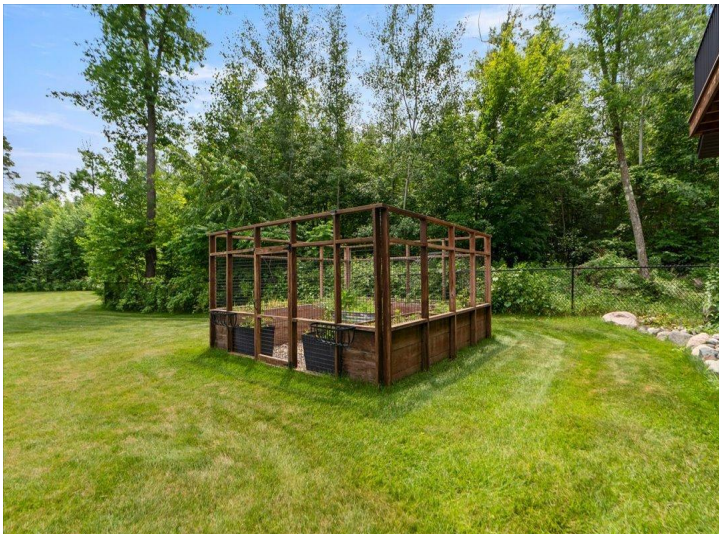
\$899,900
MLS 7101962 Lake Home
1649 Gull Lane
Nisswa MN 56468



website: www.AffinityRealEstate.com | email: info@affinityrealestate.com | office: 218-237-3333 | fax:218-237-3377

Affinity
REAL ESTATE INC

\$899,900
MLS 7101962 Lake Home
1649 Gull Lane
Nisswa MN 56468



website: www.AffinityRealEstate.com | email: info@affinityrealestate.com | office: 218-237-3333 | fax:218-237-3377

Affinity
REAL ESTATE INC

\$899,900
MLS 7101962 Lake Home
1649 Gull Lane
Nisswa MN 56468



website: www.AffinityRealEstate.com | email: info@affinityrealestate.com | office: 218-237-3333 | fax: 218-237-3377

Affinity
REAL ESTATE INC

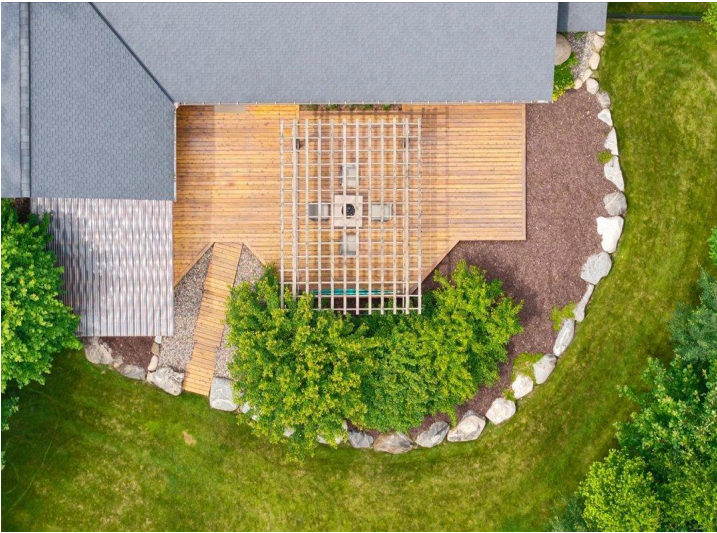
\$899,900
MLS 7101962 Lake Home
1649 Gull Lane
Nisswa MN 56468



website: www.AffinityRealEstate.com | email: info@affinityrealestate.com | office: 218-237-3333 | fax:218-237-3377



\$899,900
MLS 7101962 Lake Home
1649 Gull Lane
Nisswa MN 56468



website: www.AffinityRealEstate.com | email: info@affinityrealestate.com | office: 218-237-3333 | fax:218-237-3377



\$899,900
MLS 7101962 Lake Home
1649 Gull Lane
Nisswa MN 56468