



MLS 7102033 Land

\$98,000

0.69 Acres
Raw Land

TBD Whitefish Avenue
Cross Lake MN 56442

Status: Active

Description:

Here's your chance to build your dream home or storage building with guest quarters. Level lot situated with limited water view of Lower Whitefish Lake. Close to all the amenities the Whitefish chain area has to offer.

Additional Details:

Lot Acres	0.69
Lot Dimensions	120x239x140x222
School District	2174
Taxes	\$214
Taxes with Assessments	\$214
Tax Year	2026

Additional Features:

Driving Directions:

From Crosslake: north on Hwy 66 for 4.3 miles. Left on Manhattan Point Blvd for 2.3 miles. Continue on Whitefish ave for .2 miles to property on left.



Listed By:
Gallery of Homes

Affinity Real Estate Inc. participates in the Regional Multiple Listing Service of Minnesota, Inc Broker Reciprocity (sm) program, allowing us to display other broker's listings on our website. All properties are subject to prior sale, change or withdrawal.



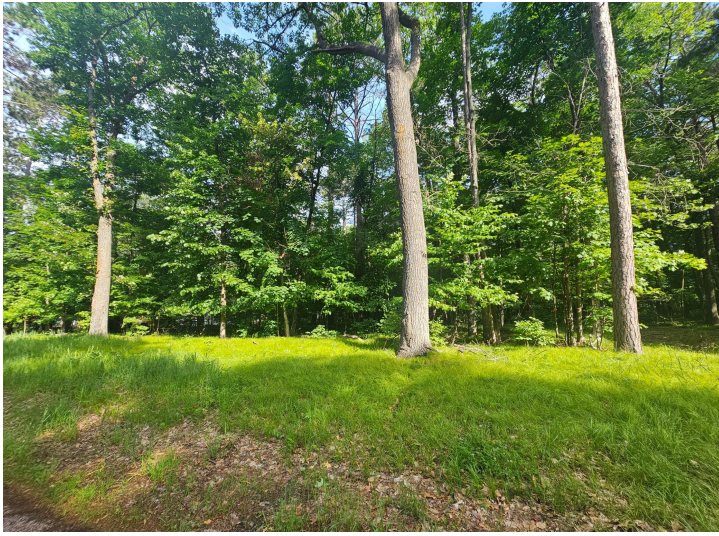
Call Affinity Real Estate

218-237-3333

info@affinityrealestate.com



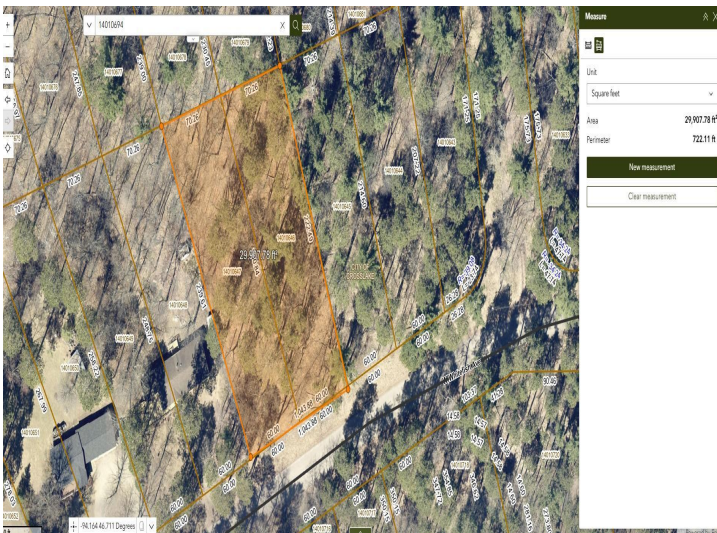
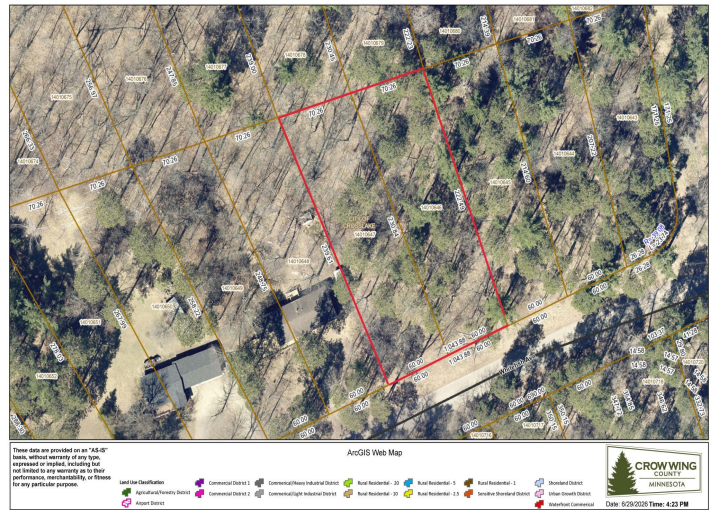
Affinity Real Estate - 600 Park Avenue South - Park Rapids MN 56470



website: www.AffinityRealEstate.com | email: info@affinityrealestate.com | office: 218-237-3333 | fax:218-237-3377



\$98,000
MLS 7102033 Land
TBD Whitefish Avenue
Cross Lake MN 56442



website: www.AffinityRealEstate.com | email: info@affinityrealestate.com | office: 218-237-3333 | fax:218-237-3377



\$98,000
 MLS 7102033 Land
 TBD Whitefish Avenue
 Cross Lake MN 56442