



MLS 7102147 Residential

\$245,000

2,204 sq ft
3 bedrooms
3 baths

722 1st Avenue
Long Prairie MN 56347

Status: Coming Soon

Description:

This beautiful classic looking home on a large corner lot is ready for viewing Monday July 6th! This well taken care of home just had some major work done! New lower level living room windows, 1 year old shingles, exterior of the home, trim, shutters and garage were just freshly painted, new leaf guard gutters installed, fresh interior paint and deep cleaned to make it move in ready! The back of the home has a large covered porch which leads down to the double car garage. There is a cement driveway for parking at the front of the home as well. The main floor has a large living room, galley kitchen with dining area, family room, primary bedroom with private 3/4 bathroom and a main floor full bathroom. Upstairs there are 2 spacious bedrooms and a 1/2 bathroom. Partially finished basement to use however you need with laundry room, storage space and utilities. So much to offer at this property. Book your showing TODAY!

Additional Details:

Year Built	1930
Lot Acres	0.312
Lot Dimensions	88x157
Garage Stalls	2
School District	2753
Taxes	\$2,331
Taxes with Assessments	\$3,144
Tax Year	2026

Additional Features:

Basement: Crawl Space, Full, Partially Finished, Storage Space **Fuel:** Electric, Natural Gas **Garage:** 2 **Heat:** Baseboard, Hot Water, Radiator **Sewer:** City Sewer/Connected **Water:** City Water/Connected **Air Conditioning:** Central Air, Window Unit(s)

Driving Directions:

Going East on Hwy 27 take a right on 8th St SE. Property will be at the corner on the right of the stop sign on 8th and 1st Ave.



Listed By:
East-West Realty of Long Prairie, Inc.

Affinity Real Estate Inc. participates in the Regional Multiple Listing Service of Minnesota, Inc Broker Reciprocity (sm) program, allowing us to display other broker's listings on our website. All properties are subject to prior sale, change or withdrawal.



Call Affinity Real Estate

218-237-3333

info@affinityrealestate.com



Affinity Real Estate - 600 Park Avenue South - Park Rapids MN 56470



website: www.AffinityRealEstate.com | email: info@affinityrealestate.com | office: 218-237-3333 | fax: 218-237-3377

Affinity
REAL ESTATE INC

\$245,000
MLS 7102147 Residential
722 1st Avenue
Long Prairie MN 56347



website: www.AffinityRealEstate.com | email: info@affinityrealestate.com | office: 218-237-3333 | fax: 218-237-3377

Affinity
REAL ESTATE INC

\$245,000
MLS 7102147 Residential
722 1st Avenue
Long Prairie MN 56347



website: www.AffinityRealEstate.com | email: info@affinityrealestate.com | office: 218-237-3333 | fax: 218-237-3377

Affinity
REAL ESTATE INC

\$245,000
MLS 7102147 Residential
722 1st Avenue
Long Prairie MN 56347



website: www.AffinityRealEstate.com | email: info@affinityrealestate.com | office: 218-237-3333 | fax: 218-237-3377

Affinity
REAL ESTATE INC

\$245,000
MLS 7102147 Residential
722 1st Avenue
Long Prairie MN 56347



website: www.AffinityRealEstate.com | email: info@affinityrealestate.com | office: 218-237-3333 | fax:218-237-3377

Affinity
REAL ESTATE INC

\$245,000
MLS 7102147 Residential
722 1st Avenue
Long Prairie MN 56347



website: www.AffinityRealEstate.com | email: info@affinityrealestate.com | office: 218-237-3333 | fax:218-237-3377

Affinity
REAL ESTATE INC

\$245,000
MLS 7102147 Residential
722 1st Avenue
Long Prairie MN 56347



website: www.AffinityRealEstate.com | email: info@affinityrealestate.com | office: 218-237-3333 | fax: 218-237-3377

Affinity
REAL ESTATE INC

\$245,000
MLS 7102147 Residential
722 1st Avenue
Long Prairie MN 56347



website: www.AffinityRealEstate.com | email: info@affinityrealestate.com | office: 218-237-3333 | fax:218-237-3377

Affinity
REAL ESTATE INC

\$245,000
MLS 7102147 Residential
722 1st Avenue
Long Prairie MN 56347



website: www.AffinityRealEstate.com | email: info@affinityrealestate.com | office: 218-237-3333 | fax:218-237-3377



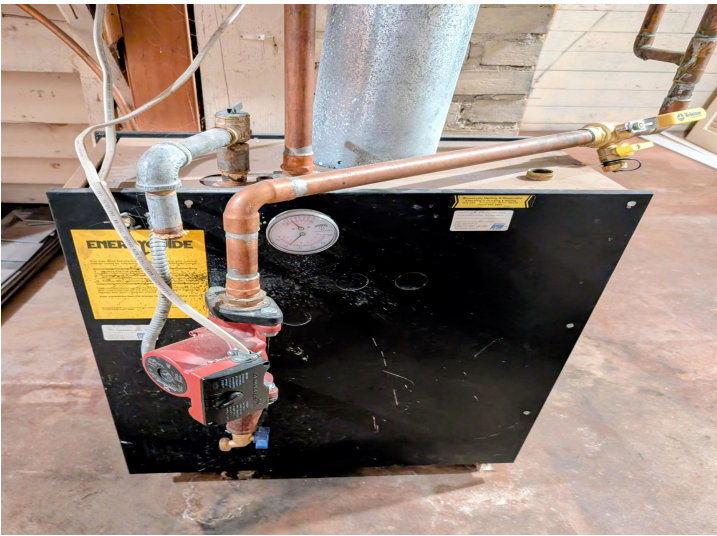
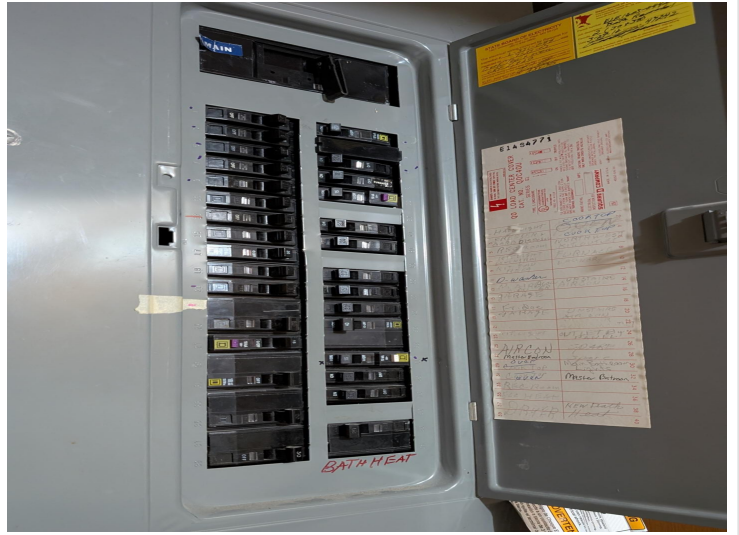
\$245,000
MLS 7102147 Residential
722 1st Avenue
Long Prairie MN 56347



website: www.AffinityRealEstate.com | email: info@affinityrealestate.com | office: 218-237-3333 | fax: 218-237-3377

Affinity
REAL ESTATE INC

\$245,000
MLS 7102147 Residential
722 1st Avenue
Long Prairie MN 56347



website: www.AffinityRealEstate.com | email: info@affinityrealestate.com | office: 218-237-3333 | fax:218-237-3377



\$245,000
MLS 7102147 Residential
722 1st Avenue
Long Prairie MN 56347



website: www.AffinityRealEstate.com | email: info@affinityrealestate.com | office: 218-237-3333 | fax:218-237-3377



\$245,000
MLS 7102147 Residential
722 1st Avenue
Long Prairie MN 56347