



MLS 7102237 Lake Home

\$359,900

1,128 sq ft
4 bedrooms
2 baths

2401 Birch Park Trail
Backus MN 56435

Waterfront: Long Lake (11025800)

Status: Coming Soon

Description:

Enjoy the true Up North lifestyle with this 4-bedroom, 2-bath seasonal cabin featuring 100 feet of level frontage on Long Lake Number Two with a beautiful sandy shoreline. Surrounded by towering pines, this peaceful retreat offers excellent fishing, stunning lake views, and endless potential.

The spacious living area features a full wall of windows overlooking the lake, creating the perfect place to relax and take in the scenery. Step outside onto the large deck overlooking the water, ideal for morning coffee, entertaining, or enjoying breathtaking sunsets.

The full walkout basement is ready to be finished, offering the opportunity to add additional living space while building equity. The property also extends across the road, providing ample room for a garage, storage building, or future expansion.

Additional Details:


Year Built	1980
Lot Acres	0.73
Lot Dimensions	irregualr
School District	113
Taxes	\$1,238
Taxes with Assessments	\$1,324
Tax Year	2026

Additional Features:

Basement: Full, Unfinished, Walkout **Fuel:** Wood **Heat:** Wood Stove **Sewer:** Tank with Drainage Field **Water:** Drilled, Private **Air Conditioning:** None

Driving Directions:

Turn onto birch park trail NW...follow road to end...property is third property from the end.

 Listed By:
Real Broker, LLC

Affinity Real Estate Inc. participates in the Regional Multiple Listing Service of Minnesota, Inc Broker Reciprocity (sm) program, allowing us to display other broker's listings on our website. All properties are subject to prior sale, change or withdrawal.

 **Call Affinity Real Estate**
218-237-3333
info@affinityrealestate.com

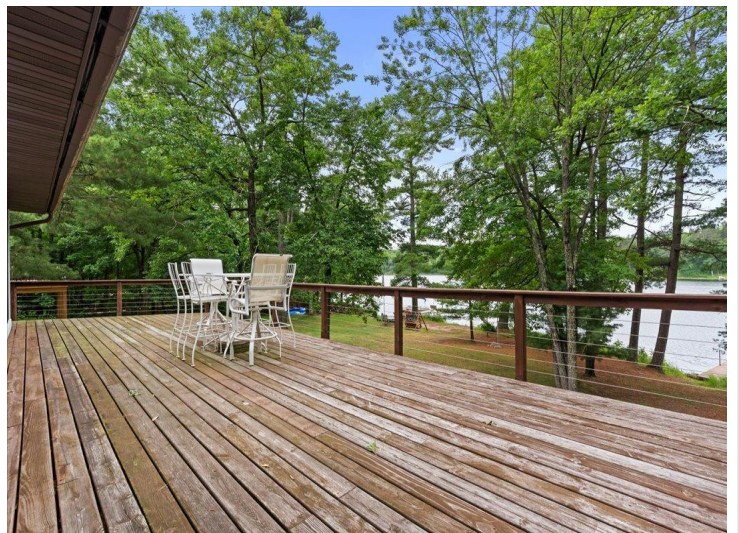
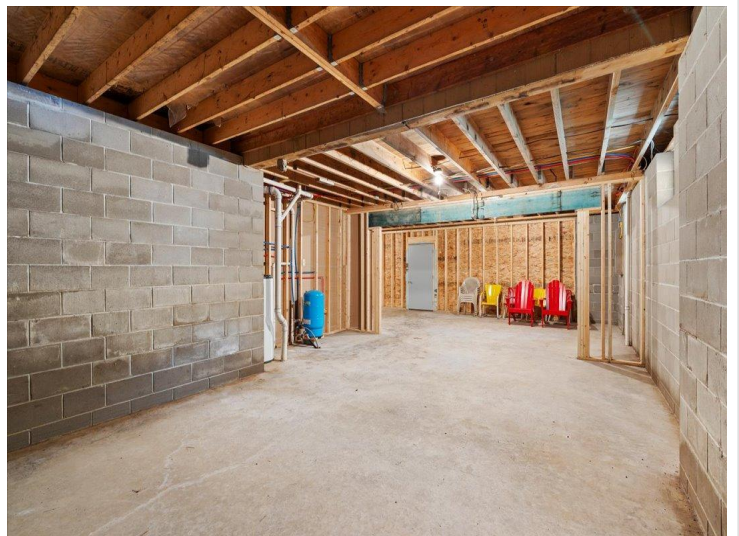
  
Affinity Real Estate - 600 Park Avenue South - Park Rapids MN 56470



website: www.AffinityRealEstate.com | email: info@affinityrealestate.com | office: 218-237-3333 | fax:218-237-3377



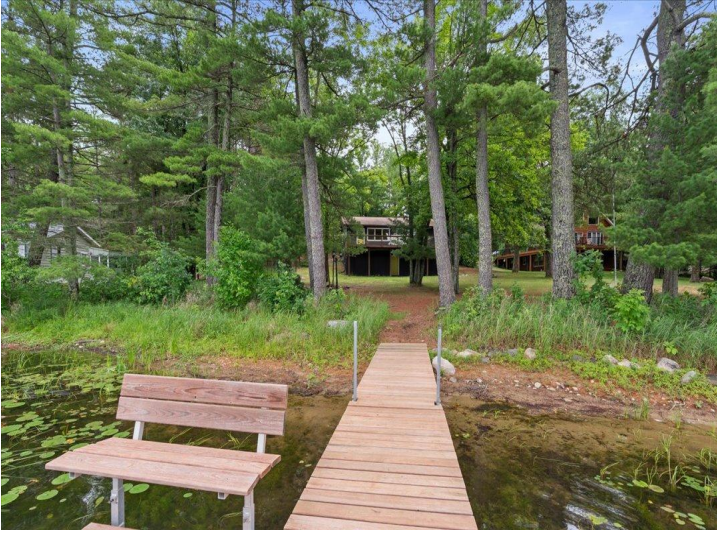
\$359,900
MLS 7102237 Lake Home
2401 Birch Park Trail
Backus MN 56435



website: www.AffinityRealEstate.com | email: info@affinityrealestate.com | office: 218-237-3333 | fax:218-237-3377

Affinity
REAL ESTATE INC

\$359,900
MLS 7102237 Lake Home
2401 Birch Park Trail
Backus MN 56435



website: www.AffinityRealEstate.com | email: info@affinityrealestate.com | office: 218-237-3333 | fax:218-237-3377



\$359,900
MLS 7102237 Lake Home
2401 Birch Park Trail
Backus MN 56435