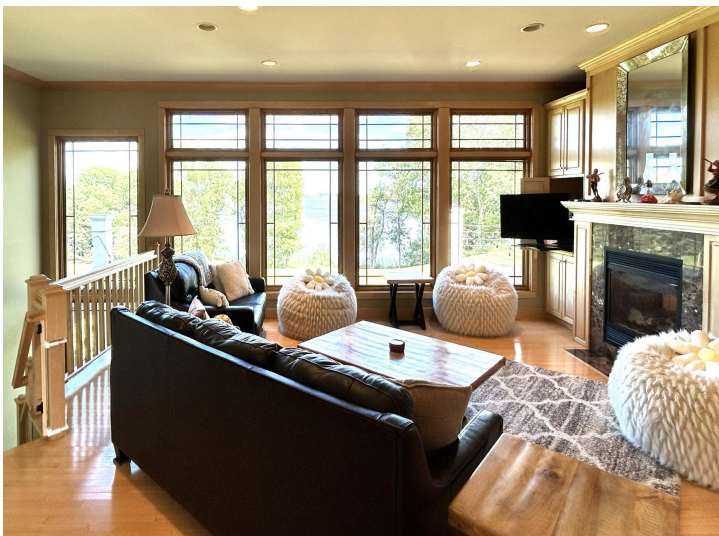




website: www.AffinityRealEstate.com | email: info@affinityrealestate.com | office: 218-237-3333 | fax: 218-237-3377

Affinity
REAL ESTATE INC

\$975,000
MLS 7102589 Lake Home
34484 233rd Avenue
Erskine MN 56535



website: www.AffinityRealEstate.com | email: info@affinityrealestate.com | office: 218-237-3333 | fax: 218-237-3377

Affinity
REAL ESTATE INC

\$975,000
MLS 7102589 Lake Home
34484 233rd Avenue
Erskine MN 56535



website: www.AffinityRealEstate.com | email: info@affinityrealestate.com | office: 218-237-3333 | fax:218-237-3377



\$975,000
MLS 7102589 Lake Home
34484 233rd Avenue
Erskine MN 56535



website: www.AffinityRealEstate.com | email: info@affinityrealestate.com | office: 218-237-3333 | fax: 218-237-3377

Affinity
REAL ESTATE INC

\$975,000
MLS 7102589 Lake Home
34484 233rd Avenue
Erskine MN 56535



website: www.AffinityRealEstate.com | email: info@affinityrealestate.com | office: 218-237-3333 | fax:218-237-3377



\$975,000
MLS 7102589 Lake Home
34484 233rd Avenue
Erskine MN 56535



website: www.AffinityRealEstate.com | email: info@affinityrealestate.com | office: 218-237-3333 | fax:218-237-3377



\$975,000
MLS 7102589 Lake Home
34484 233rd Avenue
Erskine MN 56535



website: www.AffinityRealEstate.com | email: info@affinityrealestate.com | office: 218-237-3333 | fax:218-237-3377

Affinity
REAL ESTATE INC

\$975,000
MLS 7102589 Lake Home
34484 233rd Avenue
Erskine MN 56535



website: www.AffinityRealEstate.com | email: info@affinityrealestate.com | office: 218-237-3333 | fax: 218-237-3377

Affinity
REAL ESTATE INC

\$975,000
MLS 7102589 Lake Home
34484 233rd Avenue
Erskine MN 56535



website: www.AffinityRealEstate.com | email: info@affinityrealestate.com | office: 218-237-3333 | fax: 218-237-3377

Affinity
REAL ESTATE INC

\$975,000
MLS 7102589 Lake Home
34484 233rd Avenue
Erskine MN 56535



website: www.AffinityRealEstate.com | email: info@affinityrealestate.com | office: 218-237-3333 | fax:218-237-3377

Affinity
REAL ESTATE INC

\$975,000
MLS 7102589 Lake Home
34484 233rd Avenue
Erskine MN 56535



website: www.AffinityRealEstate.com | email: info@affinityrealestate.com | office: 218-237-3333 | fax: 218-237-3377

Affinity
REAL ESTATE INC

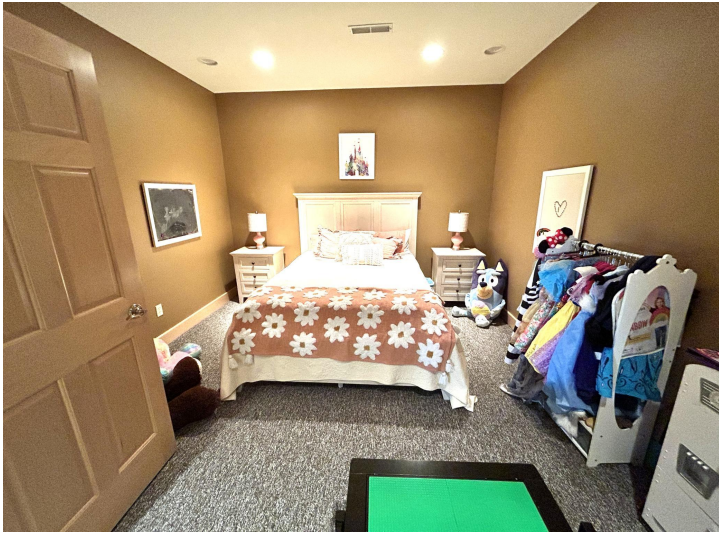
\$975,000
MLS 7102589 Lake Home
34484 233rd Avenue
Erskine MN 56535



website: www.AffinityRealEstate.com | email: info@affinityrealestate.com | office: 218-237-3333 | fax: 218-237-3377

Affinity
REAL ESTATE INC

\$975,000
MLS 7102589 Lake Home
34484 233rd Avenue
Erskine MN 56535



website: www.AffinityRealEstate.com | email: info@affinityrealestate.com | office: 218-237-3333 | fax: 218-237-3377

Affinity
REAL ESTATE INC

\$975,000
MLS 7102589 Lake Home
34484 233rd Avenue
Erskine MN 56535



website: www.AffinityRealEstate.com | email: info@affinityrealestate.com | office: 218-237-3333 | fax: 218-237-3377

Affinity
REAL ESTATE INC

\$975,000
MLS 7102589 Lake Home
34484 233rd Avenue
Erskine MN 56535



website: www.AffinityRealEstate.com | email: info@affinityrealestate.com | office: 218-237-3333 | fax:218-237-3377



\$975,000
MLS 7102589 Lake Home
34484 233rd Avenue
Erskine MN 56535



website: www.AffinityRealEstate.com | email: info@affinityrealestate.com | office: 218-237-3333 | fax:218-237-3377



\$975,000
MLS 7102589 Lake Home
34484 233rd Avenue
Erskine MN 56535



website: www.AffinityRealEstate.com | email: info@affinityrealestate.com | office: 218-237-3333 | fax:218-237-3377



\$975,000
MLS 7102589 Lake Home
34484 233rd Avenue
Erskine MN 56535



website: www.AffinityRealEstate.com | email: info@affinityrealestate.com | office: 218-237-3333 | fax: 218-237-3377

Affinity
REAL ESTATE INC

\$975,000
MLS 7102589 Lake Home
34484 233rd Avenue
Erskine MN 56535



website: www.AffinityRealEstate.com | email: info@affinityrealestate.com | office: 218-237-3333 | fax:218-237-3377



\$975,000
MLS 7102589 Lake Home
34484 233rd Avenue
Erskine MN 56535



website: www.AffinityRealEstate.com | email: info@affinityrealestate.com | office: 218-237-3333 | fax:218-237-3377



\$975,000
MLS 7102589 Lake Home
34484 233rd Avenue
Erskine MN 56535