



MLS 7102714 Lake Home

\$525,000

2,544 sq ft
3 bedrooms
3 baths

6425 Ponderosa Drive
Walker MN 56484

Waterfront: Leech

Status: Active

Description:

Located just minutes from Walker and close to the Paul Bunyan Trail, this property is a true up north retreat offering both privacy and the easy of active living whether it be biking, running or spending time on Leech Lake. With 19.5 beautiful acres and gorgeous views of Leech Lake, this well planned 3 bedroom, 3 bathroom home features convenient main-level living, a spacious walkout lower level ideal for family and guests, not to mention a beautiful custom bar for entertaining. Outside, an oversized detached garage provides ample space for a boat, ATVs, bicycles, snowmobiles and recreational toys. A large outdoor inviting firepit to create unforgettable evenings under the stars completes this Leech Lake getaway package!

Additional Details:

Year Built	1999
Lot Acres	19.5
Lot Dimensions	Irreg
Garage Stalls	2
School District	113
Taxes	\$1,836
Taxes with Assessments	\$1,922
Tax Year	2026

Additional Features:

Basement: Daylight/Lookout Windows, Finished, Full, Walkout **Fuel:** Electric, Propane **Garage:** 2 **Heat:** Dual Fuel/Off Peak, Forced Air **Sewer:** Private Sewer, Tank with Drainage Field **Water:** 4-Inch Submersible, Private **Air Conditioning:** Central Air

Driving Directions:

From Walker, take 371 North to Ponderosa Drive, turn right, continue to 6425 and sign on the right.



Listed By:
Bill Hansen Realty/Walker

Affinity Real Estate Inc. participates in the Regional Multiple Listing Service of Minnesota, Inc Broker Reciprocity (sm) program, allowing us to display other broker's listings on our website. All properties are subject to prior sale, change or withdrawal.



Call Affinity Real Estate

218-237-3333

info@affinityrealestate.com



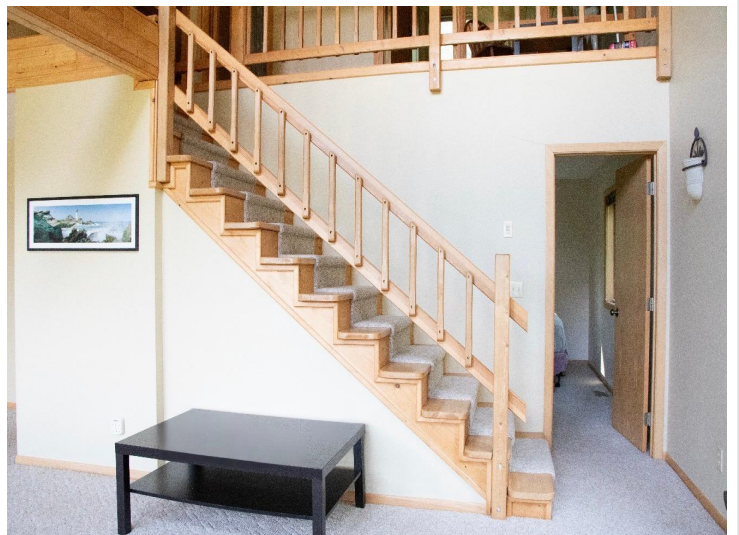
Affinity Real Estate - 600 Park Avenue South - Park Rapids MN 56470



website: www.AffinityRealEstate.com | email: info@affinityrealestate.com | office: 218-237-3333 | fax:218-237-3377

Affinity
REAL ESTATE INC

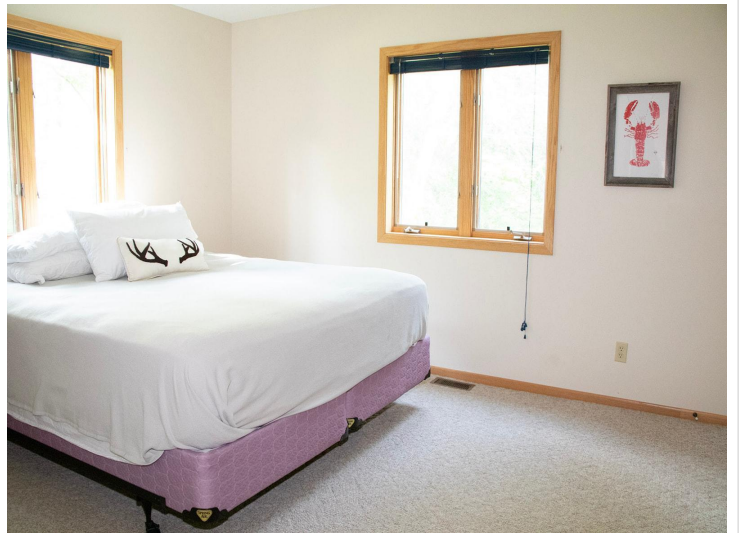
\$525,000
MLS 7102714 Lake Home
6425 Ponderosa Drive
Walker MN 56484



website: www.AffinityRealEstate.com | email: info@affinityrealestate.com | office: 218-237-3333 | fax:218-237-3377

Affinity
REAL ESTATE INC

\$525,000
MLS 7102714 Lake Home
6425 Ponderosa Drive
Walker MN 56484



website: www.AffinityRealEstate.com | email: info@affinityrealestate.com | office: 218-237-3333 | fax:218-237-3377



\$525,000
MLS 7102714 Lake Home
6425 Ponderosa Drive
Walker MN 56484



website: www.AffinityRealEstate.com | email: info@affinityrealestate.com | office: 218-237-3333 | fax:218-237-3377



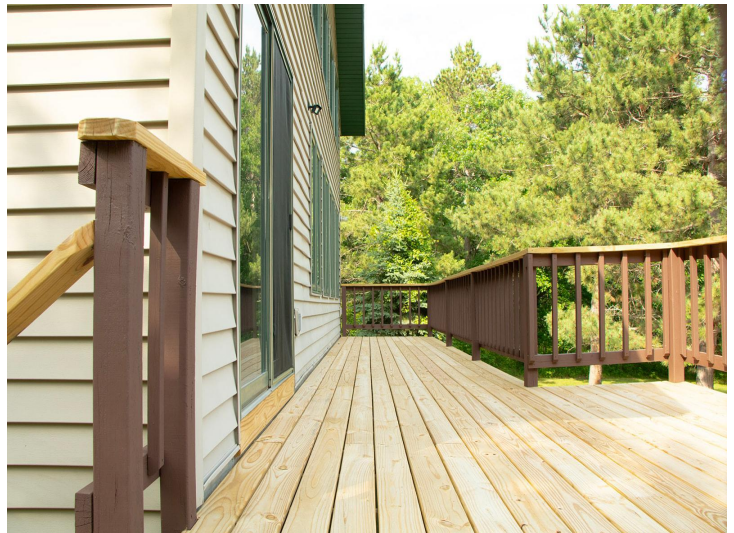
\$525,000
MLS 7102714 Lake Home
6425 Ponderosa Drive
Walker MN 56484



website: www.AffinityRealEstate.com | email: info@affinityrealestate.com | office: 218-237-3333 | fax:218-237-3377



\$525,000
MLS 7102714 Lake Home
6425 Ponderosa Drive
Walker MN 56484



website: www.AffinityRealEstate.com | email: info@affinityrealestate.com | office: 218-237-3333 | fax: 218-237-3377

Affinity
REAL ESTATE INC

\$525,000
MLS 7102714 Lake Home
6425 Ponderosa Drive
Walker MN 56484



website: www.AffinityRealEstate.com | email: info@affinityrealestate.com | office: 218-237-3333 | fax:218-237-3377



\$525,000
MLS 7102714 Lake Home
6425 Ponderosa Drive
Walker MN 56484