



MLS 7102876 Land

\$799,900

384 Acres
Raw Land

384 Acres TBD Little Pine Road
Emily MN 56447

Status: Active



Description:

The northern 384 acres of Little Pine Lodge offers an exceptional opportunity to own a private recreational haven with a rare blend of mature woods, established trails, diverse habitat, and a beautiful 5-acre buildable site located on the SE corner at the entrance. This remarkable parcel is ideal for those seeking a true up-north setting for hunting, outdoor adventure, wildlife observation, or a future cabin or lodge retreat.

8 stands/ wilderness observations stations with cleared lines of sight and 3 large clearings for food plots.

Miles of meticulously maintained trails wind through the property, creating easy access to varied terrain that includes wooded acreage, marshland, scenic low areas, and a captivating beaver pond that adds both beauty and habitat value. The land supports an impressive range of wildlife, with known presence of deer, bear, moose, ducks, turkeys, swans, eagles, wolves, bobcats, beavers, and numerous bird species, making it a dream property for hunters, conservation-minded buyers, and anyone who values an immersive outdoor experience.

The approximately 5-acre buildable area offers an outstanding setting for a future home, cabin, or getaway base camp, giving you the ability to create your own private retreat surrounded by nature. Whether your vision includes hunting weekends, trail riding, wildlife photography, hiking, snowshoeing, or simply owning a large and scenic parcel with long-term enjoyment potential, this northern tract delivers a rare combination of usability, privacy, and natural beauty.

A one-of-a-kind offering for buyers looking for significant acreage, established recreation, and an incredible setting to build memories for generations to come. Enjoy tax benefits of SFIA program at approximately \$20/ acre annually.


MLS (7052920) Lodge, Pole Shed, and 568 acres

MLS (7102851) Lodge, Pole Shed, and 184 acres

MLS (7102876) 384 Acres Vacant Land

Additional Details:

Year Built	2007
Lot Acres	384
Lot Dimensions	irreg
School District	182
Taxes	\$3,607
Taxes with Assessments	\$3,607

 Listed By: 2026
Pemberton RE

Additional Features:
Affinity Real Estate Inc. participates in the Regional Multiple Listing Service of Minnesota, Inc Broker Reciprocity (sm) program, allowing us to display other broker's listings on our website. All properties are subject to prior sale, change or withdrawal.

Driving Directions:
From Emily - head East on County Road 1 for approx. 7.5 miles. to left on Little Pine Road for approx 5 miles. Follow dead end and gate is on the left by sign.



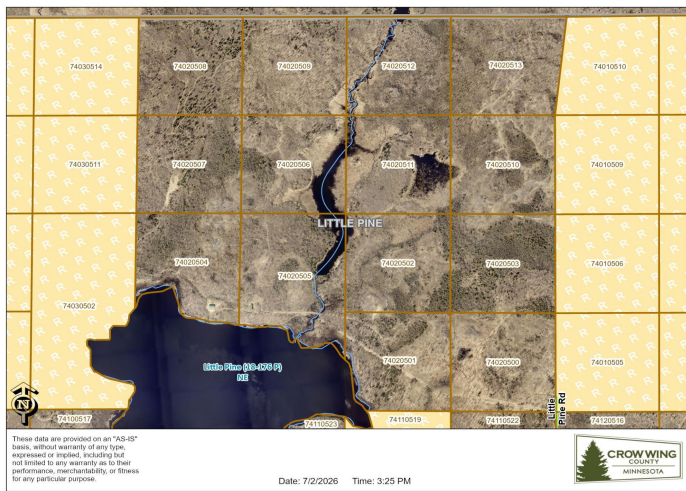
Call Affinity Real Estate

218-237-3333

info@affinityrealestate.com



Affinity Real Estate - 600 Park Avenue South - Park Rapids, MN 56470



website: www.AffinityRealEstate.com | email: info@affinityrealestate.com | office: 218-237-3333 | fax: 218-237-3377



\$799,900
 MLS 7102876 Land
 384 Acres TBD Little Pine
 Road
 Emily MN 56447



website: www.AffinityRealEstate.com | email: info@affinityrealestate.com | office: 218-237-3333 | fax:218-237-3377



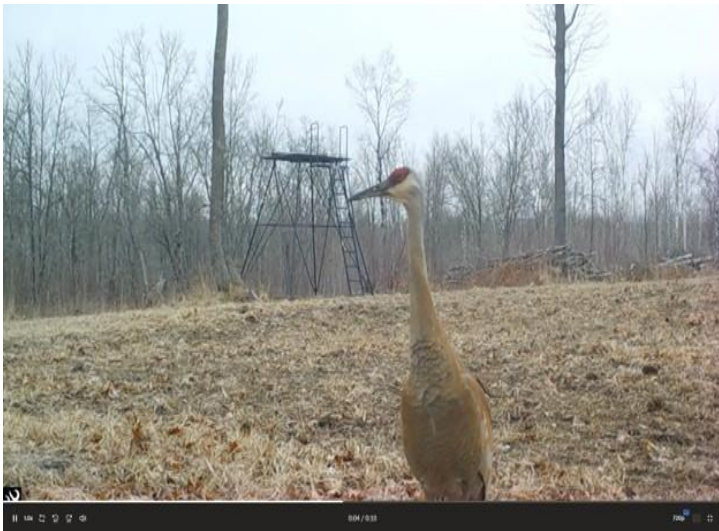
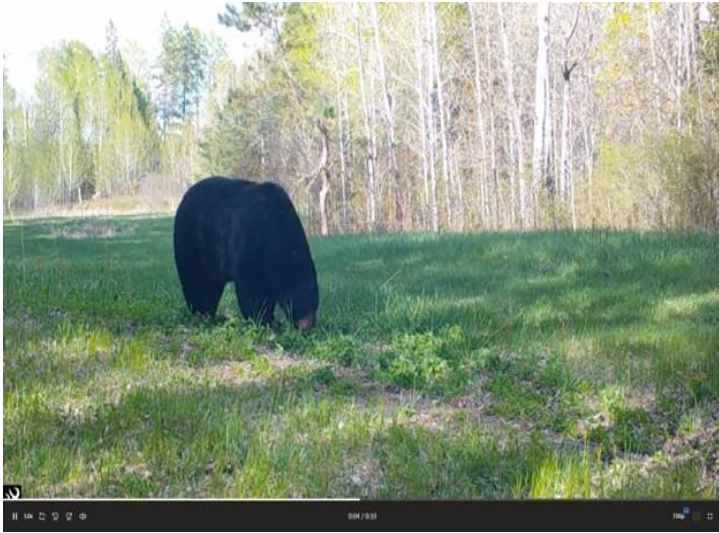
\$799,900
MLS 7102876 Land
384 Acres TBD Little Pine
Road
Emily MN 56447



website: www.AffinityRealEstate.com | email: info@affinityrealestate.com | office: 218-237-3333 | fax:218-237-3377



\$799,900
MLS 7102876 Land
384 Acres TBD Little Pine
Road
Emily MN 56447



website: www.AffinityRealEstate.com | email: info@affinityrealestate.com | office: 218-237-3333 | fax:218-237-3377



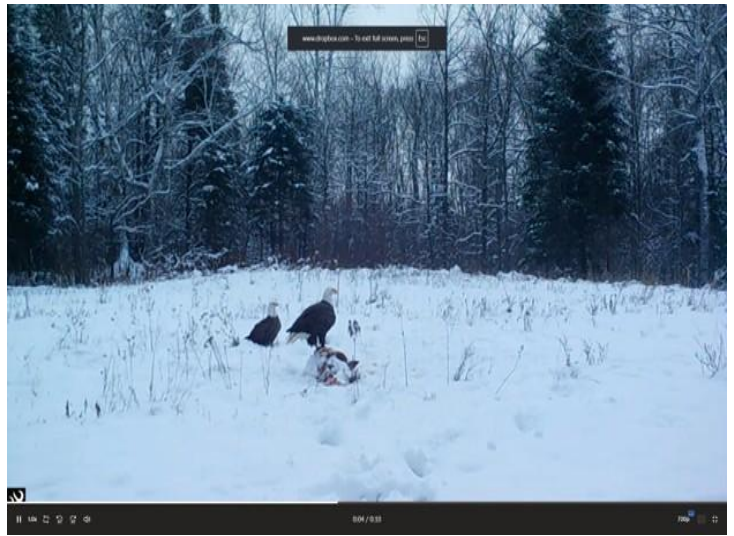
\$799,900
MLS 7102876 Land
384 Acres TBD Little Pine
Road
Emily MN 56447



website: www.AffinityRealEstate.com | email: info@affinityrealestate.com | office: 218-237-3333 | fax:218-237-3377



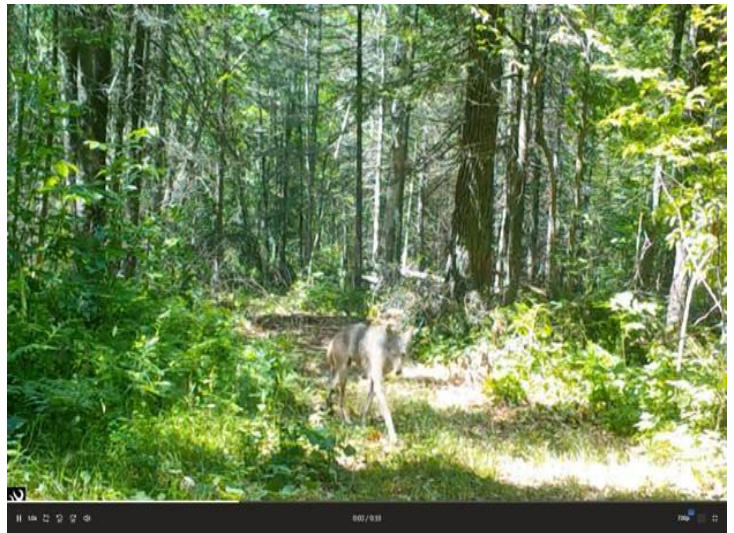
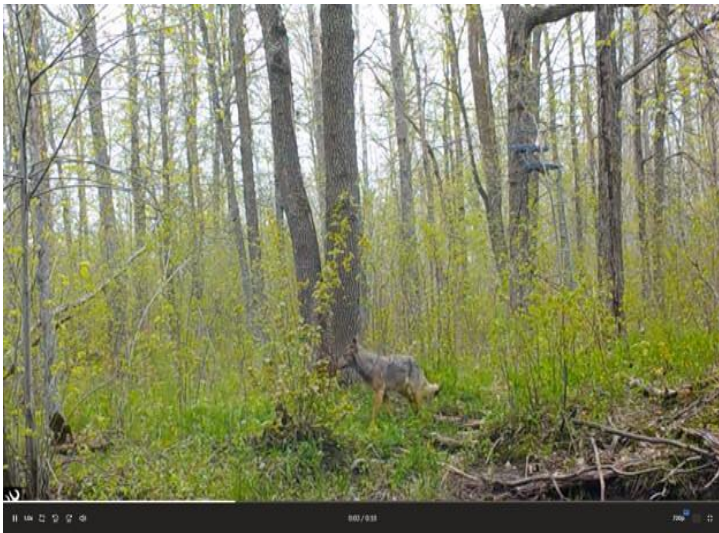
\$799,900
MLS 7102876 Land
384 Acres TBD Little Pine
Road
Emily MN 56447



website: www.AffinityRealEstate.com | email: info@affinityrealestate.com | office: 218-237-3333 | fax:218-237-3377



\$799,900
MLS 7102876 Land
384 Acres TBD Little Pine
Road
Emily MN 56447



website: www.AffinityRealEstate.com | email: info@affinityrealestate.com | office: 218-237-3333 | fax:218-237-3377

Affinity
REAL ESTATE INC

\$799,900
MLS 7102876 Land
384 Acres TBD Little Pine
Road
Emily MN 56447



website: www.AffinityRealEstate.com | email: info@affinityrealestate.com | office: 218-237-3333 | fax:218-237-3377



\$799,900
MLS 7102876 Land
384 Acres TBD Little Pine
Road
Emily MN 56447