



MLS 7102904 Residential

\$140,000

1,000 sq ft
2 bedrooms
2 baths

14578 Ridgeway Road
Crosslake MN 56442

Status: Active

Description:

Welcome to easy living in the heart of Crosslake! This charming 2-bedroom, 2-bath manufactured home offers comfortable living in a convenient location close to the Crosslake Community Center, local restaurants, shopping, and the area's many beautiful lakes. Whether you're looking for a year-round residence, weekend retreat, or low-maintenance getaway, you'll appreciate the cozy layout, functional living spaces, and easy access to everything the Crosslake area has to offer. Enjoy the Up North lifestyle with nearby recreation, trails, boating, and all the amenities that make Crosslake a sought-after destination.

Additional Details:

Year Built	1986
Lot Acres	0.25
Lot Dimensions	100x100
School District	186
Taxes	(unreported)
Taxes with Assessments	(unreported)
Tax Year	2026

Additional Features:

Fuel: Natural Gas **Heat:** Forced Air

Driving Directions:

From Crosslake Community Center, head East on Daggett Pine Rd 1/4 mile. Take Right on Deer Ridge Rd, Followed By Immediate Left onto Ridgeway Road. First house on the left.



Listed By:
Woods to Water Real Estate

Affinity Real Estate Inc. participates in the Regional Multiple Listing Service of Minnesota, Inc Broker Reciprocity (sm) program, allowing us to display other broker's listings on our website. All properties are subject to prior sale, change or withdrawal.



Call Affinity Real Estate

218-237-3333

info@affinityrealestate.com



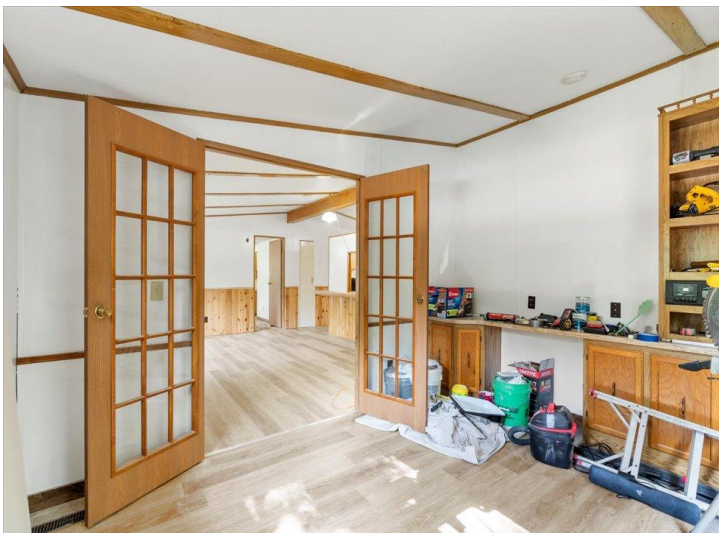
Affinity Real Estate - 600 Park Avenue South - Park Rapids MN 56470



website: www.AffinityRealEstate.com | email: info@affinityrealestate.com | office: 218-237-3333 | fax:218-237-3377



\$140,000
MLS 7102904 Residential
14578 Ridgeway Road
Crosslake MN 56442



website: www.AffinityRealEstate.com | email: info@affinityrealestate.com | office: 218-237-3333 | fax:218-237-3377



\$140,000
MLS 7102904 Residential
14578 Ridgeway Road
Crosslake MN 56442



website: www.AffinityRealEstate.com | email: info@affinityrealestate.com | office: 218-237-3333 | fax:218-237-3377



\$140,000
MLS 7102904 Residential
14578 Ridgeway Road
Crosslake MN 56442



website: www.AffinityRealEstate.com | email: info@affinityrealestate.com | office: 218-237-3333 | fax:218-237-3377



\$140,000
MLS 7102904 Residential
14578 Ridgeway Road
Crosslake MN 56442