



MLS 7102983 Residential

\$199,900

1,964 sq ft
4 bedrooms
2 baths

1317 America Avenue
Bemidji MN 56601

Status: Coming Soon

Description:

Charming, spacious, and full of 1920s character, this Bemidji home offers a layout that truly flows. The sun-filled entry welcomes you inside, where vintage details meet everyday functionality. The large kitchen features a sink-side window, multiple pantries, and great storage.

With 4 bedrooms and 2 bathrooms, the home includes a roomy main-floor primary suite with walk-through bath access and an oversized upstairs bedroom. The lower level is a major bonus — complete with a bedroom, 3/4 bath, rec room, kitchenette, and den — perfect for multi-generational living or creating a separate living space.

Given the generous square footage and flexible floor plan, this home could be an excellent rental investment. Its convenient location only strengthens its appeal for a rental portfolio. The backyard offers a privacy fence, lovely backyard, and a deck for outdoor enjoyment. Alley parking accommodates three vehicles. With a brand-new roof and move-in-ready condition, this home will likely go quickly.

Additional Details:

Year Built	1910
Lot Acres	0.114
Lot Dimensions	50x140
School District	31
Taxes	\$1,984
Taxes with Assessments	\$1,984
Tax Year	2026

Additional Features:

Basement: Block, Daylight/Lookout Windows, Egress Window(s), Finished, Full, Kitchenette, Storage Space **Fuel:** Natural Gas **Heat:** Forced Air **Sewer:** City Sewer/Connected **Water:** City Water/Connected **Air Conditioning:** Central Air

Driving Directions:

Bemidji Ave N to



Listed By:
Headwaters Realty Services LLC

Affinity Real Estate Inc. participates in the Regional Multiple Listing Service of Minnesota, Inc Broker Reciprocity (sm) program, allowing us to display other broker's listings on our website. All properties are subject to prior sale, change or withdrawal.



Call Affinity Real Estate

218-237-3333

info@affinityrealestate.com



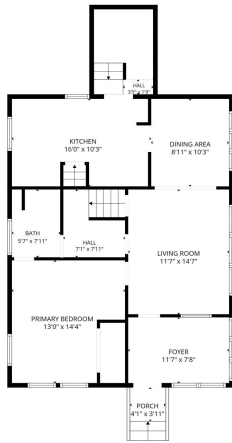
Affinity Real Estate - 600 Park Avenue South - Park Rapids MN 56470



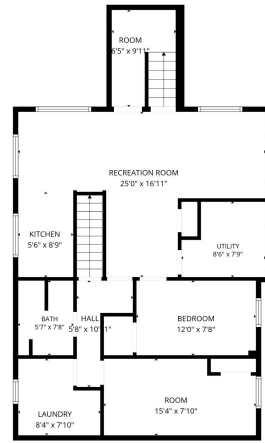
website: www.AffinityRealEstate.com | email: info@affinityrealestate.com | office: 218-237-3333 | fax:218-237-3377

Affinity
REAL ESTATE INC

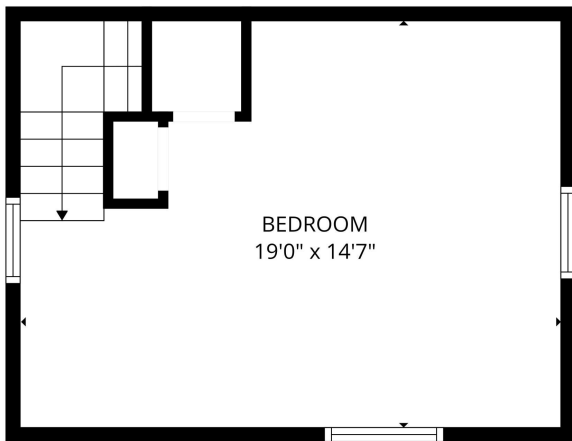
\$199,900
MLS 7102983 Residential
1317 America Avenue
Bemidji MN 56601



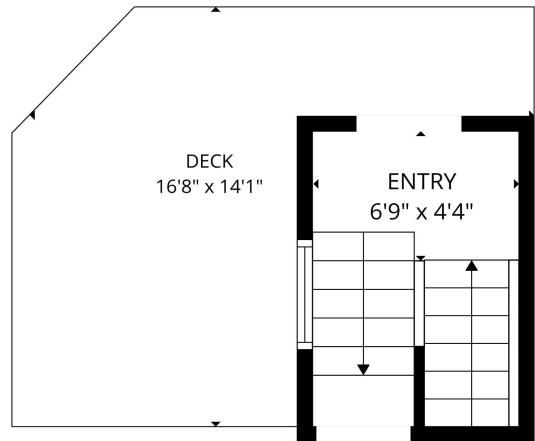
FLOOR PLAN CREATED BY CUBICASA APP. MEASUREMENTS DEEMED HIGHLY RELIABLE BUT NOT GUARANTEED.



FLOOR PLAN CREATED BY CUBICASA APP. MEASUREMENTS DEEMED HIGHLY RELIABLE BUT NOT GUARANTEED.



FLOOR PLAN CREATED BY CUBICASA APP. MEASUREMENTS DEEMED HIGHLY RELIABLE BUT NOT GUARANTEED.

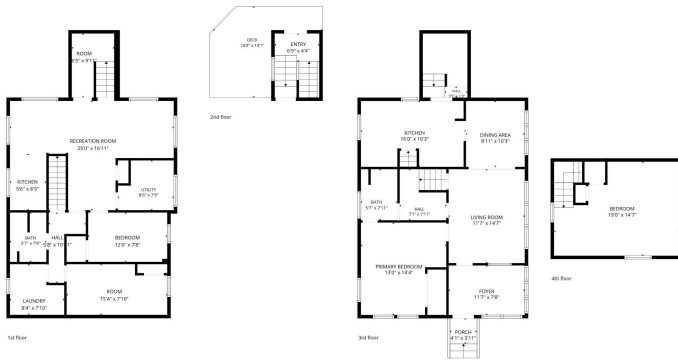


FLOOR PLAN CREATED BY CUBICASA APP. MEASUREMENTS DEEMED HIGHLY RELIABLE BUT NOT GUARANTEED.

website: www.AffinityRealEstate.com | email: info@affinityrealestate.com | office: 218-237-3333 | fax: 218-237-3377



\$199,900
 MLS 7102983 Residential
 1317 America Avenue
 Bemidji MN 56601



FLOOR PLAN CREATED BY CURICASA APP. MEASUREMENTS DEEMED HIGHLY RELIABLE BUT NOT GUARANTEED.



website: www.AffinityRealEstate.com | email: info@affinityrealestate.com | office: 218-237-3333 | fax:218-237-3377



\$199,900
 MLS 7102983 Residential
 1317 America Avenue
 Bemidji MN 56601