



MLS 7103044 Lake Home

\$995,000

1,152 sq ft
2 bedrooms
2 baths

6613 Point Drive
Pine River MN 56474

Waterfront: Whitefish Lake
(18031000)

Status: Active

Description:

Experience the best of lake living with this stunning Whitefish Lake property, perfectly situated on a beautifully manicured 101-foot shoreline lot offering breathtaking water views. This tastefully updated 2-bedroom, 2-bath home is move-in ready and comes fully furnished, including appliances, making it easy to start enjoying the lake from day one. The inviting interior features custom hickory cabinetry and a warm welcoming living room with tongue and grooved vaulted ceilings centered around an impressive fireplace—a focal point for a gathering place after a day on the water. Recent exterior updates include durable SmartSide siding on both the home and the insulated garage, providing lasting beauty and low-maintenance appeal.

Step outside to an expansive Trex lakeside deck designed for entertaining, relaxing and soaking in the spectacular views. The shoreline has been thoughtfully improved with two docks, two boat lifts, a weed roller and a lakebed propulsion system that creates a pristine sand-bottom swimming area—everything you need for the ultimate waterfront lifestyle. A blacktop road leads directly to the property, adding convenience and curb appeal. Whether you're looking for a year-round residence, a weekend getaway or an exceptional investment opportunity, this Whitefish Lake retreat offers the perfect combination of comfort, quality and unforgettable lakefront living.

Additional Details:

Year Built	1990
Lot Acres	1.2
Lot Dimensions	101x527x100x511
Garage Stalls	2
School District	2174
Taxes	\$4,842
Taxes with Assessments	\$4,842
Tax Year	2026

Additional Features:

Basement: Full, Partially Finished, Walkout **Fuel:** Propane **Garage:** 2 **Heat:** Forced Air **Sewer:** Private Sewer, Tank with Drainage Field
Water: Drilled, Well **Air Conditioning:** None

Driving Directions:

From Highway 101, turn right onto Long Farm Road, south to S. Point Drive, east to 6613 Point Drive.



Listed By:
Heartland Real Estate

Affinity Real Estate Inc. participates in the Regional Multiple Listing Service of Minnesota, Inc Broker Reciprocity (sm) program, allowing us to display other broker's listings on our website. All properties are subject to prior sale, change or withdrawal.



Call Affinity Real Estate

218-237-3333

info@affinityrealestate.com



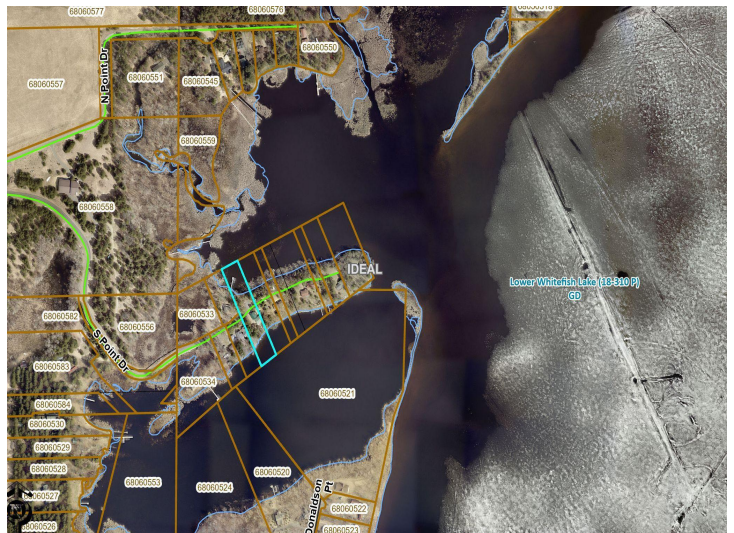
Affinity Real Estate - 600 Park Avenue South - Park Rapids MN 56470



website: www.AffinityRealEstate.com | email: info@affinityrealestate.com | office: 218-237-3333 | fax: 218-237-3377

Affinity
REAL ESTATE INC

\$995,000
MLS 7103044 Lake Home
6613 Point Drive
Pine River MN 56474



website: www.AffinityRealEstate.com | email: info@affinityrealestate.com | office: 218-237-3333 | fax:218-237-3377



\$995,000
MLS 7103044 Lake Home
6613 Point Drive
Pine River MN 56474