



MLS 7103275 Land

\$24,899

0.31 Acres
Raw Land

TBD Walnut Lane
Park Rapids MN 56470

Status: Active

Description:

Discover the perfect place to build your dream home on this .31-acre city lot located on the east side of Park Rapids! This level, cleared lot offers an excellent building site with city water, city sewer, natural gas, electricity, and high-speed internet available at the road, making it easy to start planning your dream home. Enjoy all the benefits of living in Park Rapids, including a welcoming community, charming downtown, abundant lakes, miles of trails, excellent golf courses, and endless opportunities for year-round recreation. Whether you're ready to build now or looking for a great investment opportunity, this property offers the perfect place to bring your vision to life.

Additional Details:

Lot Acres	0.31
Lot Dimensions	80.52x118.51x80.52x137.99
School District	309
Taxes	\$202
Taxes with Assessments	\$202
Tax Year	2025

Additional Features:

Driving Directions:

From Downtown Park Rapids, head east on Hwy 34. Then take a right on Henrietta Ave S, turn a right on Walnut Lane and lot will be on the right.



Listed By:
Keller Williams Realty Professionals

Affinity Real Estate Inc. participates in the Regional Multiple Listing Service of Minnesota, Inc Broker Reciprocity (sm) program, allowing us to display other broker's listings on our website. All properties are subject to prior sale, change or withdrawal.



Call Affinity Real Estate

218-237-3333

info@affinityrealestate.com



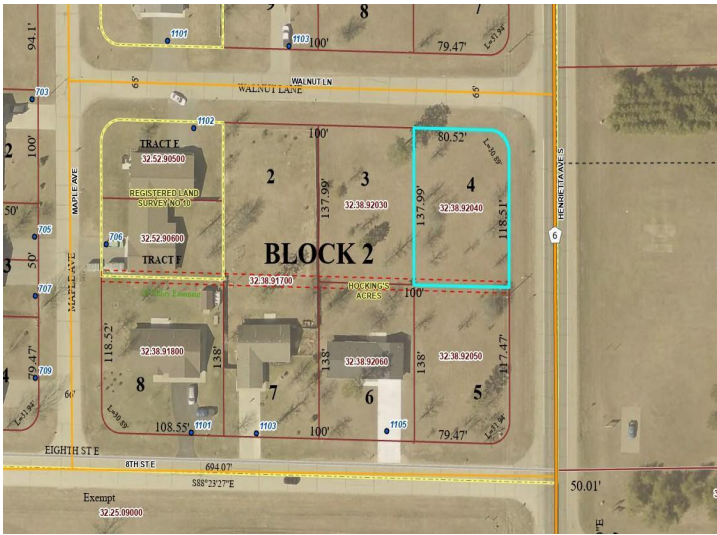
Affinity Real Estate - 600 Park Avenue South - Park Rapids MN 56470



website: www.AffinityRealEstate.com | email: info@affinityrealestate.com | office: 218-237-3333 | fax:218-237-3377



\$24,899
MLS 7103275 Land
TBD Walnut Lane
Park Rapids MN 56470



website: www.AffinityRealEstate.com | email: info@affinityrealestate.com | office: 218-237-3333 | fax: 218-237-3377



\$24,899
MLS 7103275 Land
TBD Walnut Lane
Park Rapids MN 56470