



MLS 7103284 Land

\$24,900

0.32 Acres
Raw Land

TBD Walnut Ln
Park Rapids MN 56470

Status: Active

Description:

Here's your opportunity to build on this .32-acre city lot located on the east side of Park Rapids! Offering a level, cleared building site with city water, city sewer, natural gas, electricity, and high-speed internet available at the road, this property is ready for your future home. Experience everything Park Rapids has to offer, from its friendly small-town atmosphere and vibrant downtown to countless lakes, scenic trails, premier golf courses, and year-round outdoor recreation. Whether you're ready to build today or invest for tomorrow, this lot provides the ideal setting to make your plans a reality.

Additional Details:

Lot Acres	0.32
Lot Dimensions	137.99x100
School District	309
Taxes	\$202
Taxes with Assessments	\$202
Tax Year	2025

Additional Features:

Driving Directions:

From Downtown Park Rapids, head east on Hwy 34. Then take a right on Henrietta Ave S, turn a right on Walnut Lane and lot will be on the right.



Listed By:
Keller Williams Realty Professionals

Affinity Real Estate Inc. participates in the Regional Multiple Listing Service of Minnesota, Inc Broker Reciprocity (sm) program, allowing us to display other broker's listings on our website. All properties are subject to prior sale, change or withdrawal.



Call Affinity Real Estate

218-237-3333

info@affinityrealestate.com



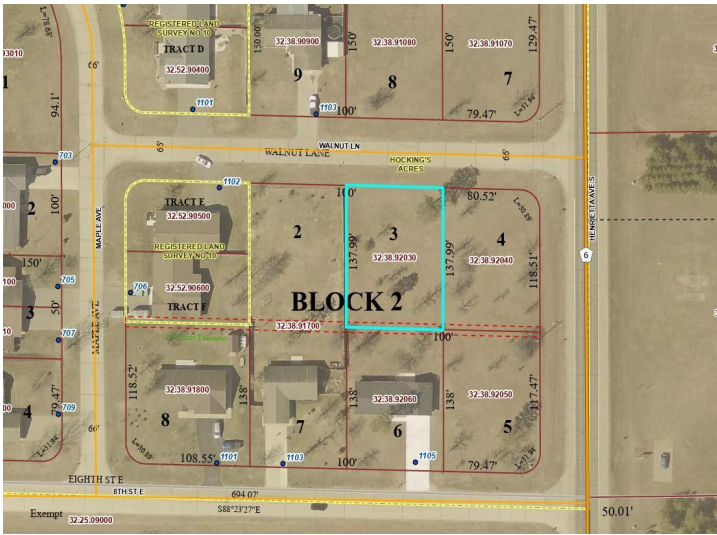
Affinity Real Estate - 600 Park Avenue South - Park Rapids MN 56470



website: www.AffinityRealEstate.com | email: info@affinityrealestate.com | office: 218-237-3333 | fax:218-237-3377



\$24,900
MLS 7103284 Land
TBD Walnut Ln
Park Rapids MN 56470



website: www.AffinityRealEstate.com | email: info@affinityrealestate.com | office: 218-237-3333 | fax:218-237-3377



\$24,900
MLS 7103284 Land
TBD Walnut Ln
Park Rapids MN 56470