



MLS 7103295 Land

\$24,900

0.34 Acres
Raw Land

TBD Main Ave
Park Rapids MN 56470

Status: Active

Description:

Here's your opportunity to build on this .34-acre city lot in Park Rapids! Offering a level, cleared building site with city water, city sewer, natural gas, electricity, and high-speed internet available at the road, this property is ready for your future home. Enjoy the convenience of being close to historic downtown Park Rapids, local shopping, restaurants, and everyday amenities while still having easy access to the area's many lakes, scenic trails, golf courses, and year-round recreation. Whether you're ready to build today or invest for the future, this lot offers an excellent location to bring your plans to life.

Additional Details:

Lot Acres	0.34
Lot Dimensions	149.83x100.01x149.08x100.02
School District	309
Taxes	\$584
Taxes with Assessments	\$584
Tax Year	2025

Additional Features:

Driving Directions:

From downtown Park Rapids, go south on Main Ave S past 8th St W and the lot will be on your right.



Listed By:
Keller Williams Realty Professionals

Affinity Real Estate Inc. participates in the Regional Multiple Listing Service of Minnesota, Inc Broker Reciprocity (sm) program, allowing us to display other broker's listings on our website. All properties are subject to prior sale, change or withdrawal.



Call Affinity Real Estate

218-237-3333

info@affinityrealestate.com



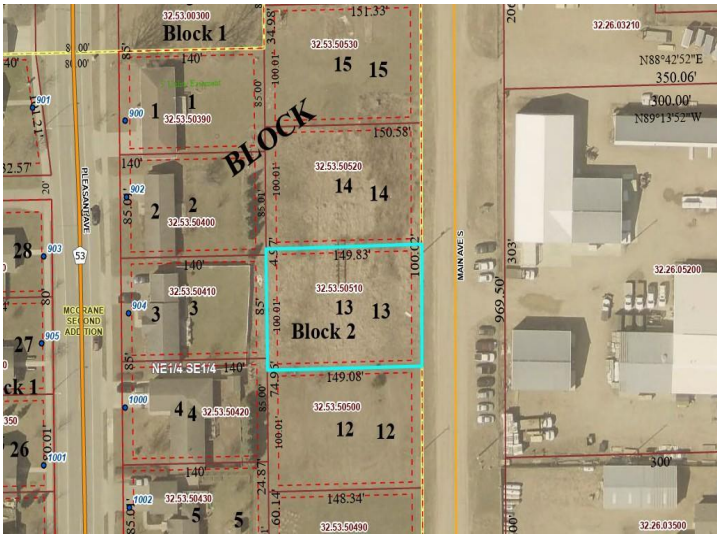
Affinity Real Estate - 600 Park Avenue South - Park Rapids MN 56470



website: www.AffinityRealEstate.com | email: info@affinityrealestate.com | office: 218-237-3333 | fax:218-237-3377



\$24,900
MLS 7103295 Land
TBD Main Ave
Park Rapids MN 56470



website: www.AffinityRealEstate.com | email: info@affinityrealestate.com | office: 218-237-3333 | fax: 218-237-3377



\$24,900
 MLS 7103295 Land
 TBD Main Ave
 Park Rapids MN 56470