



MLS 7103393 Residential

\$799,900

1,476 sq ft
3 bedrooms
1 baths

32067 County 3
Eagle Bend MN 56446

Status: Coming Soon

Description:

Your very own hunting Mecca with the shed of your dreams! Here, the home is simply an added bonus as there is so much value in the land and outbuildings! The main shed is 50X120 (built in 2014) with a finished interior with 2- 12X16 overhead doors and a 12X12 overhead door. Floor drains, a bathroom, finished inside with metal and ample lighting, this building is perfect for someone wanting or needing high sidewalls and a finished and heated space. The secondary shed is 30X40 with 12' sidewalls and a 9X12 overhead door. The 3BR home is clean and comfortable and well maintained! But the real value here is in the gorgeous wooded land with trails and some open space for food plots. Located on a tar road and across the street from Double Eagle Golf Course, this is a great property for someone wanting wooded land with amazing sheds! Build your dream home here or use the current home and enjoy as is!

Additional Details:

| | |
|------------------------|---------|
| Year Built | 1970 |
| Lot Acres | 40 |
| Lot Dimensions | 40AC |
| Garage Stalls | 2 |
| School District | 787 |
| Taxes | \$3,686 |
| Taxes with Assessments | \$3,686 |
| Tax Year | 2026 |

Additional Features:

Basement: Block, Finished, Full, Partially Finished **Fuel:** Propane **Garage:** 2 **Heat:** Forced Air **Sewer:** Private Sewer **Water:** Well **Air Conditioning:** Central Air

Driving Directions:

From Alexandria take Cr 29N to Rt on Cr 5 to Lt on Cr 1, to Rt on CR 14 to Lt on CR 3.



Listed By:
Kvale Real Estate

Affinity Real Estate Inc. participates in the Regional Multiple Listing Service of Minnesota, Inc Broker Reciprocity (sm) program, allowing us to display other broker's listings on our website. All properties are subject to prior sale, change or withdrawal.



Call Affinity Real Estate

218-237-3333

info@affinityrealestate.com



Affinity Real Estate - 600 Park Avenue South - Park Rapids MN 56470



website: www.AffinityRealEstate.com | email: info@affinityrealestate.com | office: 218-237-3333 | fax:218-237-3377

Affinity
REAL ESTATE INC

\$799,900
MLS 7103393 Residential
32067 County 3
Eagle Bend MN 56446



website: www.AffinityRealEstate.com | email: info@affinityrealestate.com | office: 218-237-3333 | fax:218-237-3377



\$799,900
MLS 7103393 Residential
32067 County 3
Eagle Bend MN 56446



website: www.AffinityRealEstate.com | email: info@affinityrealestate.com | office: 218-237-3333 | fax:218-237-3377



\$799,900
MLS 7103393 Residential
32067 County 3
Eagle Bend MN 56446



website: www.AffinityRealEstate.com | email: info@affinityrealestate.com | office: 218-237-3333 | fax:218-237-3377



\$799,900
MLS 7103393 Residential
32067 County 3
Eagle Bend MN 56446



website: www.AffinityRealEstate.com | email: info@affinityrealestate.com | office: 218-237-3333 | fax:218-237-3377

Affinity
REAL ESTATE INC

\$799,900
MLS 7103393 Residential
32067 County 3
Eagle Bend MN 56446



website: www.AffinityRealEstate.com | email: info@affinityrealestate.com | office: 218-237-3333 | fax:218-237-3377

Affinity
REAL ESTATE INC

\$799,900
MLS 7103393 Residential
32067 County 3
Eagle Bend MN 56446



website: www.AffinityRealEstate.com | email: info@affinityrealestate.com | office: 218-237-3333 | fax:218-237-3377



\$799,900
MLS 7103393 Residential
32067 County 3
Eagle Bend MN 56446



website: www.AffinityRealEstate.com | email: info@affinityrealestate.com | office: 218-237-3333 | fax: 218-237-3377

Affinity
REAL ESTATE INC

\$799,900
MLS 7103393 Residential
32067 County 3
Eagle Bend MN 56446



website: www.AffinityRealEstate.com | email: info@affinityrealestate.com | office: 218-237-3333 | fax:218-237-3377

Affinity
REAL ESTATE INC

\$799,900
MLS 7103393 Residential
32067 County 3
Eagle Bend MN 56446



website: www.AffinityRealEstate.com | email: info@affinityrealestate.com | office: 218-237-3333 | fax: 218-237-3377

Affinity
REAL ESTATE INC

\$799,900
MLS 7103393 Residential
32067 County 3
Eagle Bend MN 56446



website: www.AffinityRealEstate.com | email: info@affinityrealestate.com | office: 218-237-3333 | fax: 218-237-3377

Affinity
REAL ESTATE INC

\$799,900
MLS 7103393 Residential
32067 County 3
Eagle Bend MN 56446



website: www.AffinityRealEstate.com | email: info@affinityrealestate.com | office: 218-237-3333 | fax: 218-237-3377



\$799,900
MLS 7103393 Residential
32067 County 3
Eagle Bend MN 56446



website: www.AffinityRealEstate.com | email: info@affinityrealestate.com | office: 218-237-3333 | fax:218-237-3377



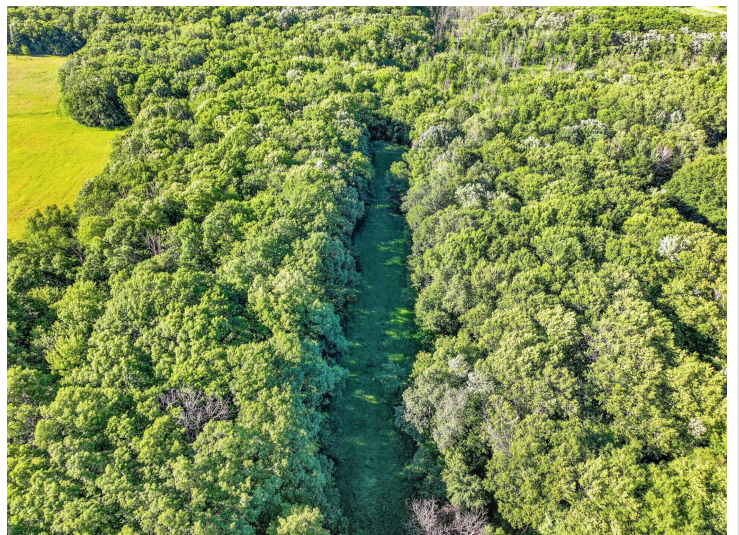
\$799,900
MLS 7103393 Residential
32067 County 3
Eagle Bend MN 56446



website: www.AffinityRealEstate.com | email: info@affinityrealestate.com | office: 218-237-3333 | fax:218-237-3377



\$799,900
MLS 7103393 Residential
32067 County 3
Eagle Bend MN 56446



website: www.AffinityRealEstate.com | email: info@affinityrealestate.com | office: 218-237-3333 | fax:218-237-3377



\$799,900
MLS 7103393 Residential
32067 County 3
Eagle Bend MN 56446



website: www.AffinityRealEstate.com | email: info@affinityrealestate.com | office: 218-237-3333 | fax:218-237-3377



\$799,900
MLS 7103393 Residential
32067 County 3
Eagle Bend MN 56446