



MLS 7103411 Residential

\$424,900

2,832 sq ft
4 bedrooms
3 baths

22859 285th Avenue
Akeley MN 56433

Status: Active

Description:

Country home with acreage - Newly constructed home with 4 bedroom 3 baths and fully finished walk-out basement. Open designed kitchen, living room and dining area with vaulted ceiling, cabinets are hickory with granite counter tops and a very spacious center island. Main level primary bedroom with 3/4 bath and walk-in closet along plus a 2nd bedroom and laundry room. The lower level is completely finished with two bedrooms, 3/4 bath, large family room with walk-out and flex room area. The 9.9 acres gives you plenty of elbow room plus approximately 5 acres that is heavily wooded and ready to explore. \$424,900

Additional Details:

Year Built	2025
Lot Acres	9.9
Lot Dimensions	329 x 1321
Garage Stalls	2
School District	113
Taxes	\$330
Taxes with Assessments	\$330
Tax Year	2026

Additional Features:

Fuel: Propane **Heat:** Forced Air

Driving Directions:

From Park Rapids - Head E on Hwy 34 15 miles and turn right onto 230th Street, proceed 1/2 mile and take a right on 285th Avenue, continue to third house on your right.



Listed By:
Affinity Real Estate Inc.

Affinity Real Estate Inc. participates in the Regional Multiple Listing Service of Minnesota, Inc Broker Reciprocity (sm) program, allowing us to display other broker's listings on our website. All properties are subject to prior sale, change or withdrawal.



Call Affinity Real Estate

218-237-3333

info@affinityrealestate.com



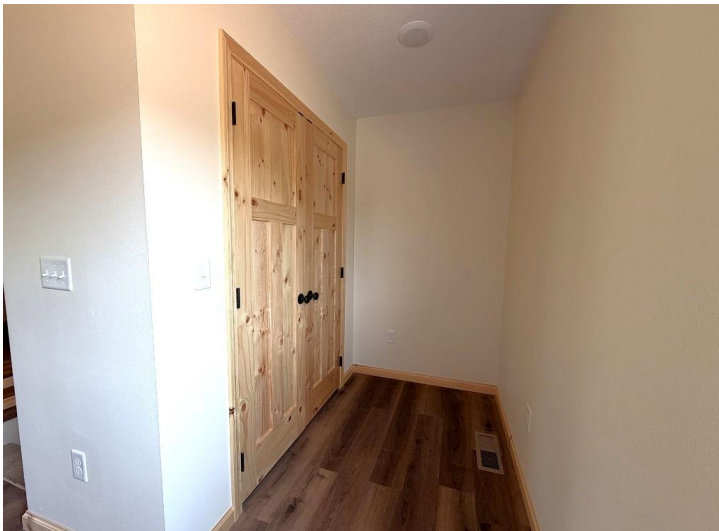
Affinity Real Estate - 600 Park Avenue South - Park Rapids MN 56470



website: www.AffinityRealEstate.com | email: info@affinityrealestate.com | office: 218-237-3333 | fax:218-237-3377



\$424,900
MLS 7103411 Residential
22859 285th Avenue
Akeley MN 56433



website: www.AffinityRealEstate.com | email: info@affinityrealestate.com | office: 218-237-3333 | fax: 218-237-3377

Affinity
REAL ESTATE INC

\$424,900
MLS 7103411 Residential
22859 285th Avenue
Akeley MN 56433



website: www.AffinityRealEstate.com | email: info@affinityrealestate.com | office: 218-237-3333 | fax:218-237-3377

Affinity
REAL ESTATE INC

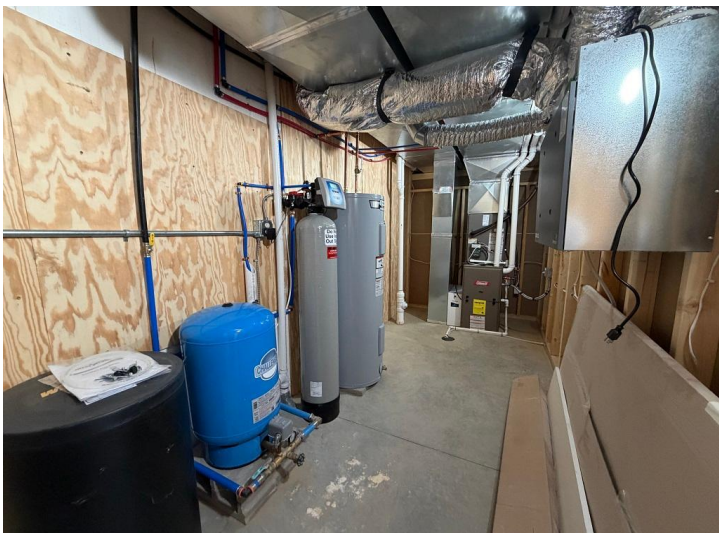
\$424,900
MLS 7103411 Residential
22859 285th Avenue
Akeley MN 56433



website: www.AffinityRealEstate.com | email: info@affinityrealestate.com | office: 218-237-3333 | fax: 218-237-3377



\$424,900
MLS 7103411 Residential
22859 285th Avenue
Akeley MN 56433



website: www.AffinityRealEstate.com | email: info@affinityrealestate.com | office: 218-237-3333 | fax:218-237-3377

Affinity
REAL ESTATE INC

\$424,900
MLS 7103411 Residential
22859 285th Avenue
Akeley MN 56433



website: www.AffinityRealEstate.com | email: info@affinityrealestate.com | office: 218-237-3333 | fax:218-237-3377



\$424,900
MLS 7103411 Residential
22859 285th Avenue
Akeley MN 56433