



MLS 7103529 Lake Home

\$369,000

818 sq ft
1 bedrooms
1 baths

27945 Far North Drive
Nevis MN 56467

Waterfront: Eighth Crow Wing

Status: Active

Description:

8TH CROW WING LAKE- 200' of great swimming beach and 2.29 acres of whispering pines make this 1-bedroom, 1-bath cabin with a 28' x 36' garage the perfect Up North, secluded getaway. The sunroom and living room offer flexible sleeping space for guests, while the new lakeside windows, tar driveway, and well (2024) make this a move in ready lake cabin.

Additional Details:

Year Built	1956
Lot Acres	2.29
Lot Dimensions	200x495
Garage Stalls	2
School District	308
Taxes	\$1,918
Taxes with Assessments	\$1,918
Tax Year	2025

Additional Features:

Fuel: Wood **Heat:** Wood Stove

Driving Directions:

From Park Rapids, take MN-34 E to Nevis, turn right onto 210th St (Far North Dr), continue about 3 miles, and arrive at 27945 Far North Dr on the left.



Listed By:
eXp Realty

Affinity Real Estate Inc. participates in the Regional Multiple Listing Service of Minnesota, Inc Broker Reciprocity (sm) program, allowing us to display other broker's listings on our website. All properties are subject to prior sale, change or withdrawal.



Call Affinity Real Estate

218-237-3333

info@affinityrealestate.com



Affinity Real Estate - 600 Park Avenue South - Park Rapids MN 56470



website: www.AffinityRealEstate.com | email: info@affinityrealestate.com | office: 218-237-3333 | fax: 218-237-3377

Affinity
REAL ESTATE INC

\$369,000
MLS 7103529 Lake Home
27945 Far North Drive
Nevis MN 56467



website: www.AffinityRealEstate.com | email: info@affinityrealestate.com | office: 218-237-3333 | fax:218-237-3377



\$369,000
MLS 7103529 Lake Home
27945 Far North Drive
Nevis MN 56467



website: www.AffinityRealEstate.com | email: info@affinityrealestate.com | office: 218-237-3333 | fax: 218-237-3377

Affinity
REAL ESTATE INC

\$369,000
MLS 7103529 Lake Home
27945 Far North Drive
Nevis MN 56467



website: www.AffinityRealEstate.com | email: info@affinityrealestate.com | office: 218-237-3333 | fax:218-237-3377



\$369,000
MLS 7103529 Lake Home
27945 Far North Drive
Nevis MN 56467



website: www.AffinityRealEstate.com | email: info@affinityrealestate.com | office: 218-237-3333 | fax: 218-237-3377

Affinity
REAL ESTATE INC

\$369,000
MLS 7103529 Lake Home
27945 Far North Drive
Nevis MN 56467



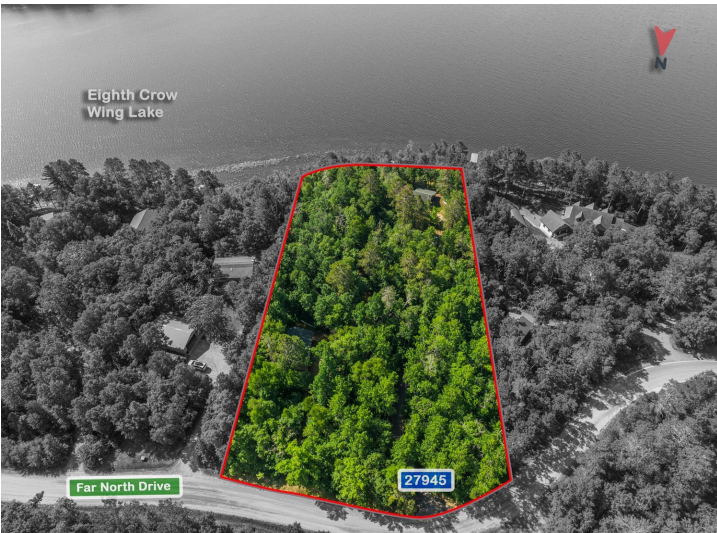
Eighth Crow
Wing Lake



website: www.AffinityRealEstate.com | email: info@affinityrealestate.com | office: 218-237-3333 | fax:218-237-3377

Affinity
REAL ESTATE INC

\$369,000
MLS 7103529 Lake Home
27945 Far North Drive
Nevis MN 56467



website: www.AffinityRealEstate.com | email: info@affinityrealestate.com | office: 218-237-3333 | fax:218-237-3377



\$369,000
MLS 7103529 Lake Home
27945 Far North Drive
Nevis MN 56467



website: www.AffinityRealEstate.com | email: info@affinityrealestate.com | office: 218-237-3333 | fax:218-237-3377



\$369,000
MLS 7103529 Lake Home
27945 Far North Drive
Nevis MN 56467